

## Excellent Integrated System Limited

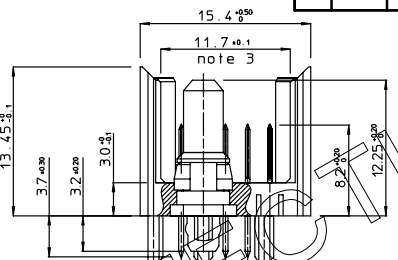
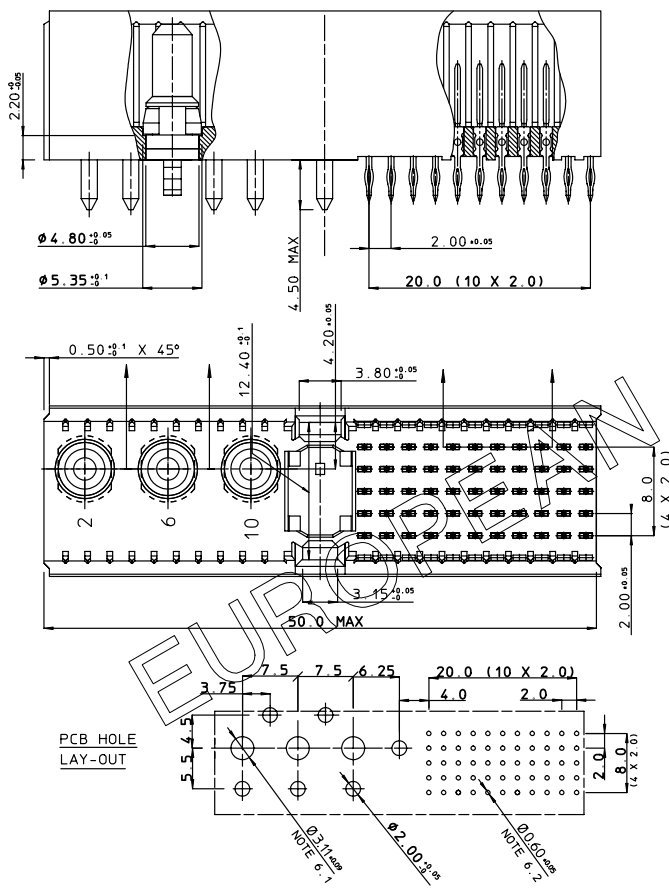
Stocking Distributor

Click to view price, real time Inventory, Delivery & Lifecycle Information:

[FCI](#)  
[HM2A31PG5000N9LF](#)

For any questions, you can email us directly:  
[sales@integrated-circuit.com](mailto:sales@integrated-circuit.com)

BS.C .201632.027	GEN. ST.	01	02	03	04	05	06	07	08	0D	50	60	70	80	90	REV.	DATE	DESCRIPTION	BY	C'K'D'																	
	INT. ST.	10	11	12	13	14	18	20	31	32	33	34	38	39	40	42	43	44	45	46	48	56	70	72	73	76	81	83	84	86	A	2001-09-14	CONVERSION REVISION 01	KN			
																																	B	2005-08-12	105-0140	ALEX B	BKP
																																	C	2006-07-05	106-0096	VIVEX	BKP



PERFORMANCE CHARACTERISTICS (SIGNAL CONTACTS)

- CURRENT RATING 1.5 A AT 20°C ( FULLY LOADED )
- A AT 70°C ( FULLY LOADED )
- RATED VOLTAGE : 500 V AC ( CONT / CONT )
- OPERATING TEMPERATURE : -55°C TO 125°C
- CONTACT RESISTANCE : 20 mΩ MAX
- INSERTION FORCE : 0.75 N MAX / CONT
- EXTRACTION FORCE : 0.15 N MIN / CONT
- INSULATION RESISTANCE : 10<sup>4</sup> MΩ MIN

NOTES

- PLATING : -  
-POWER CONTACTS -> 1.5 μm Au over 2.0 μm Ni  
LEAD FREE INDICATOR : LF-LEAD FREE ( DIGIT 15 & 16 )  
-SIGN. CONT. -> HM2A31PG5000
  - THIS PRODUCT IS CSA APPROVED. ( REF DRW No BS.C .2018444.003 )  
THIS PRODUCT IS UL RECOGNIZED.
  - MEASURED AT THE BOTTOM.
  - FOR PRE-ASSEMBLED POWER PRESS-FIT CONTACT DETAIL, SEE DRAWING NR. :  
- BS.A.201624.017
  - ALLOWED PCB THICKNESS: MIN. 1.8 MM.
  - PCB HOLE DEFINITION:
- | Ø drilled hole | Cu plating | SnPb/SnP plating | Ø finished hole |
|----------------|------------|------------------|-----------------|
| 3.19 - 3.25    | 25 μm min  | 5 μm min.        | 3.02 - 3.20     |
- FOR PTH DETAILS OF SIGNAL CONTACTS REFER BS.A .201572.001
  - THE PRODUCT (LF) MEETS EUROPEAN UNION DIRECTIVES AND OTHER COUNTRY REGULATIONS AS DESCRIBED IN GS-22-008

**MALE SIGNAL STRAIGHT PRESS-FIT-TO-BOARD CONNECTOR**  
WITH PRE-ASSEMBLED POWER PRESS-FIT CONTACTS

1DEC ±0.2	APPR.	DATE	SIGN.	MILLIPACS 2 / TYPE M / PRE-ASS. CONN.
2DEC ±0.1	DRAFT	1997-12-19	W.Panis	CAT. No. HM2A31PG5000----
ANGLES ±1°	CHECKED			SCALE
WE RESERVE THE RIGHT TO CHANGE DIMENSIONS OR REQUIREMENTS WITHOUT PRIOR NOTICE.	PROD. MGR			3 / 1
	PR. ENG. MGR			
	PR. MGT. MGR			

ALL DIMENSIONS IN MM

**FCI** www.fciconnect.com

REFERENCES

BS.C .201632.027 C

DRAWING No. CUSTOMER DRAWING REVISION

THIS IS OUR EXCLUSIVE PROPERTY. IT IS NOT TO BE COPIED, REPRINTED OR DISCLOSED TO A THIRD PARTY, NOR USED FOR MANUFACTURING WITHOUT OUR WRITTEN CONSENT, AND HAS TO BE RETURNED TO US IN CASE OF RE-ISSUE

DIT IS ONZE EIGENDOM EN MAG NIET WERKSTUK, HERKOPAT, OVERNEMEN AM GEDRUKT, NOCH VOOR FABRIKATIE GEBRUIKT WORDEN, ZONDER ONZE SCHRIFTELIJKE TOELATINGE. BIJ NIET GEBRUIK IS TERUGGEGEVEN VOOR LICHT.