

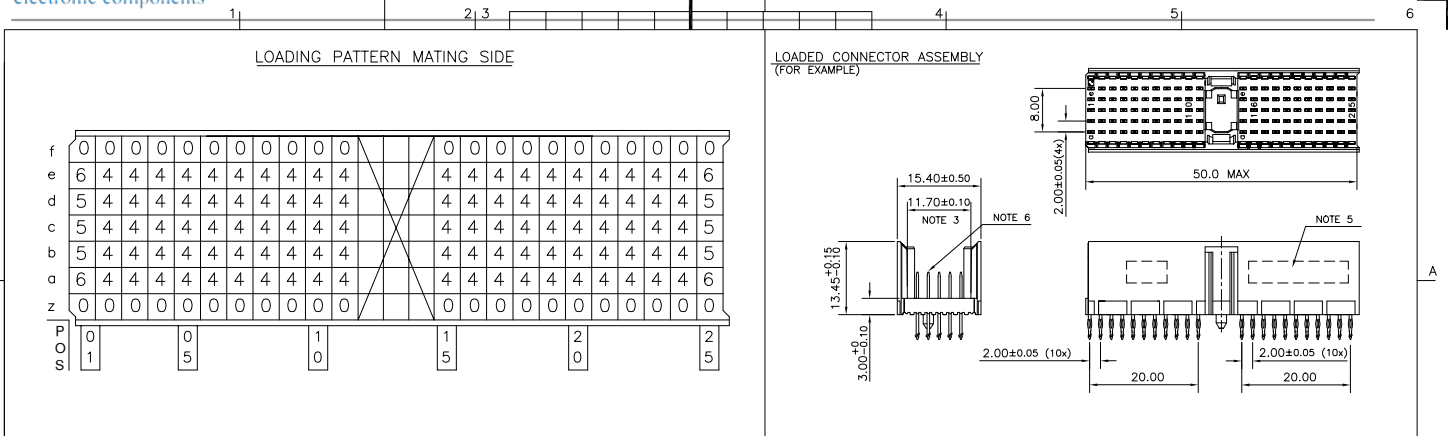
Excellent Integrated System Limited

Stocking Distributor

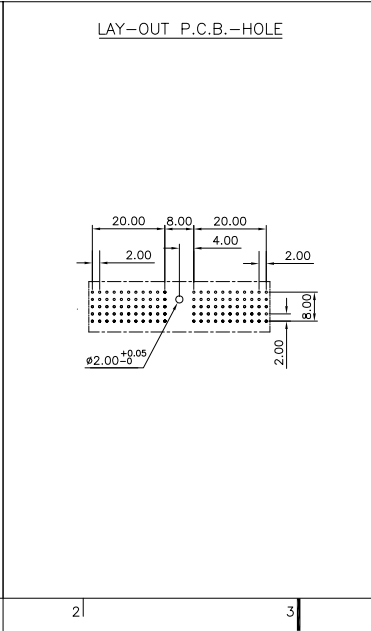
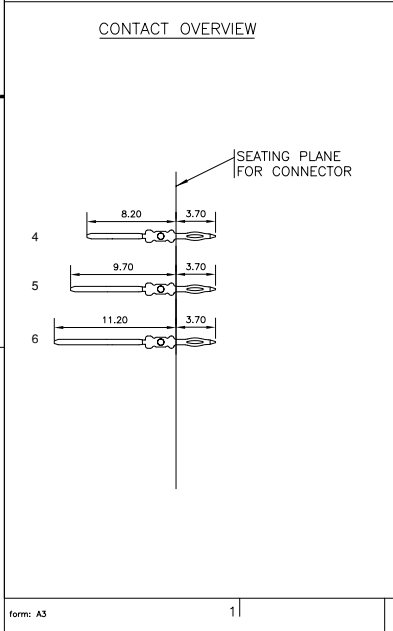
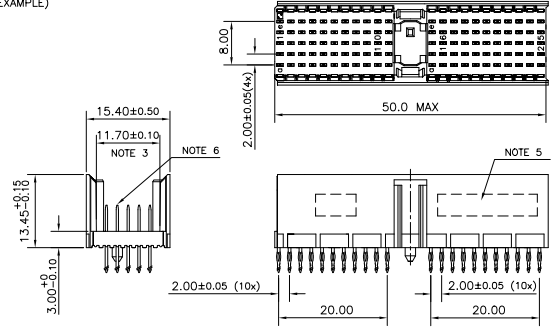
Click to view price, real time Inventory, Delivery & Lifecycle Information:

[FCI](#)
[HM2P07PDP1W0N9](#)

For any questions, you can email us directly:
sales@integrated-circuit.com



LOADED CONNECTOR ASSEMBLY (FOR EXAMPLE)



HM2P07PDP1W0 _{LF}

LEAD FREE INDICATOR : LF = LEAD FREE (DIGIT 15 & 16)

PLATING CODE (DIGIT 13 AND 14) (REF DRW NO. BS, C , 201844 , 003)

NOTES

- THIS PRODUCT IS CSA APPROVED.
- THIS PRODUCT IS UL RECOGNIZED.
- MEASURED AT THE BOTTOM.
- MATERIAL CONTACT: PHOSPHORBRONZE
HOUSING: CREAM WHITE GLASS FILLED POLYESTER UL-94V0
- CONNECTOR PRINTED WITH P/N AND DATE CODE.
- FOR ACTUAL CONTACT LOADINGS, SEE LOADING PATTERN MATING SIDE.
- SHAPE OF CONNECTOR HOUSING CAN ALTER DEPENDING ON PRODUCTION LOCATION
- THE PRODUCT (LF) MEETS EUROPEAN UNION DIRECTIVES AND OTHER COUNTRY REGULATIONS AS DESCRIBED IN GS-22-008
- FOR RECOMMENDED PTH DIMENSIONS REFER DRAWING : BS, A , 201572 , 001
- CATALOG NO: HM2P07PDP1W0----

mat'l. code		surface		tolerance	projection	product family		
SEE NOTE 4		ISO 1302		ISO 406 ISO 1101	MM	MILLIPACS		
ltr	ecn no	dr	date	tolerances unless otherwise specified		title		
A	ID4-0097	MINI	2004/10/16	angles	0±0.2	MPACS 5+2R STR HDR PF CONN TYPE A		
B	ID5-0190	MINI	2005/10/13	linear	00±0.1			
C	ID6-5090	MINI	2006/06/28	0°±1°	scale			
dr	MINI K. VANDANATH		2004/10/16	FCI		sheet 1 of 1 Size		
enrg	BIJU K. PAUL		2004/10/16			BS, C , 203028, 175 A3		
chr	BIJU K. PAUL		2006/06/28			type Product Customer Drawing		
appd	BIJU K. PAUL		2006/06/28					
sheet index	revision sheet	C	1					

FCI FCIconnect.com Copyright FCI