

Excellent Integrated System Limited

Stocking Distributor

Click to view price, real time Inventory, Delivery & Lifecycle Information:

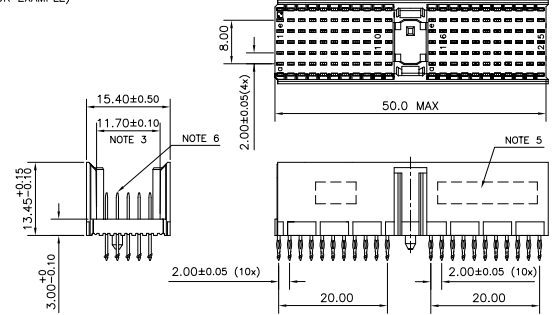
[FCI](#)
[HM2P07PKE3C0GF](#)

For any questions, you can email us directly:
sales@integrated-circuit.com

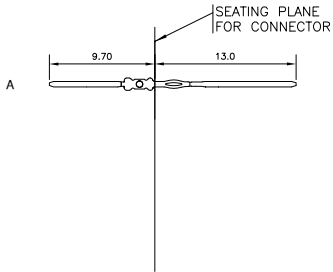
LOADING PATTERN MATING SIDE

f	0	0	0	0	0	0	0	0	0	0	0	0	0	0	0	0	0	0	0
e	0	0	0	0	0	0	0	0	0	0	0	0	0	0	0	0	0	0	0
d	0	0	0	0	0	0	0	0	0	0	0	0	0	0	0	0	0	0	0
c	0	0	0	0	0	0	0	0	0	0	0	0	0	0	0	0	0	0	0
b	0	0	0	0	0	0	0	0	0	0	0	0	0	0	0	0	0	0	0
a	0	0	0	0	0	0	0	0	0	0	0	0	0	0	0	0	0	0	0
Z	0	0	0	0	0	0	0	0	0	0	0	0	0	0	0	0	0	0	0
P	0	0	0	0	0	0	0	0	0	0	0	0	0	0	0	0	0	0	0
S	0	5	1	0	1	5	2	0	2	5									

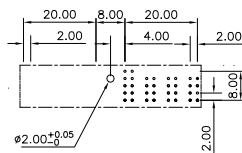
LOADED CONNECTOR ASSEMBLY (FOR EXAMPLE)



CONTACT OVERVIEW



LAY-OUT P.C.B.-HOLE



LEAD FREE INDICATOR : LF = LEAD FREE (DIGIT 15 & 16)

HM2P07PKE3C0---

PLATING CODE (DIGIT 13 AND 14)
(REF DRW NO. BS.C , 201844 , 003)

NOTES

- THIS PRODUCT IS CSA APPROVED.
- THIS PRODUCT IS UL RECOGNIZED.
- MEASURED AT THE BOTTOM.
- MATERIAL CONTACT: PHOSPHORBRONZE
HOUSING: CREAM WHITE GLASS FILLED POLYESTER UL-94V0
- CONNECTOR PRINTED WITH P/N AND DATE CODE.
- FOR ACTUAL CONTACT LOADINGS, SEE LOADING PATTERN MATING SIDE.
- SHAPE OF CONNECTOR HOUSING CAN ALTER DEPENDING ON PRODUCTION LOCATION
- THE PRODUCT (LF) MEETS EUROPEAN UNION DIRECTIVES AND OTHER COUNTRY REGULATIONS AS DESCRIBED IN GS-22-008
- FOR RECOMMENDED PTH DIMENSIONS REFER DRAWING : BS, A , 201572 , 001
- CATALOG NO: HM2P07PKE3C0----

mat'l. code	SEE NOTE 4	surface	ISO 1302	tolerance	ISO 406	ISO 1101	projection	product family	MILLIPACS
ltr	ecn no	dr	date	tolerances unless otherwise specified				title	
A	104-0038	MINI	2004/05/18	angles		0±0.2	MM	MPACS 5+2R STR HDR PF CONN TYPE A	
B	105-0188	MINI	2005/10/13	linear		00±0.1			
C	106-0090	MINI	2006/06/27	0°±1"			scale		
		dr	MINI K. VANDANATH	2004/05/18				dwg no	sheet 1 of 1
		enrg	BIJU K. PAUL	2004/05/18				BS, C , 203028, 135	A3
		chr	BIJU K. PAUL	2006/06/27					
		appd	BIJU K. PAUL	2006/06/27					
sheet	revision	C						type	Product Customer Drawing
index	sheet	1							