

Excellent Integrated System Limited

Stocking Distributor

Click to view price, real time Inventory, Delivery & Lifecycle Information:

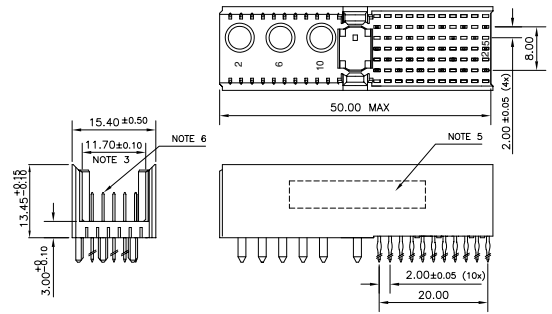
[FCI](#)
[HM2P11PD5510N9](#)

For any questions, you can email us directly:
sales@integrated-circuit.com

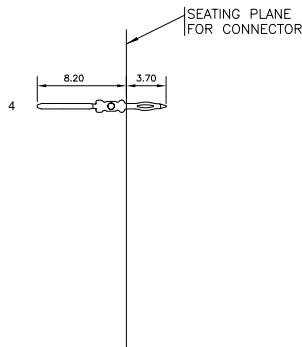
LOADING PATTERN MATING SIDE

f	0	0	0	0	0	0	0	0	0	0	0	0	0	0	0
e	4	0	4	0	4	0	4	0	4	0	4	0	4	0	4
d	0	4	0	4	0	4	0	4	0	4	0	4	0	4	0
c	4	0	4	0	4	0	4	0	4	0	4	0	4	0	4
b	0	4	0	4	0	4	0	4	0	4	0	4	0	4	0
a	4	0	4	0	4	0	4	0	4	0	4	0	4	0	4
z	0	0	0	0	0	0	0	0	0	0	0	0	0	0	0
POS	01	05	10	15	20	25									

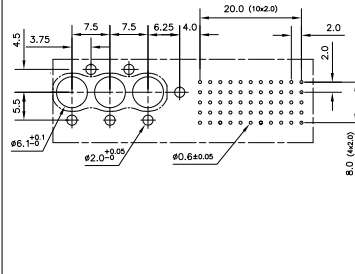
LOADED CONNECTOR ASSEMBLY
(FOR EXAMPLE)



CONTACT OVERVIEW



LAY-OUT P.C.B.-HOLE



HM2P11PD5510 LEAD FREE INDICATOR : LF = LEAD FREE (DIGIT 15 & 16)
PLATING CODE (DIGIT 13 AND 14)
(REF DRW NO. BS, C , 201844 , 003)

NOTES

1. THIS PRODUCT IS CSA APPROVED.
2. THIS PRODUCT IS UL RECOGNIZED.
3. MEASURED AT THE BOTTOM.
4. MATERIAL CONTACT: PHOSPHORBRONZE
HOUSING: CREAM WHITE GLASS FILLED POLYESTER UL-94V0
5. CONNECTOR PRINTED WITH P/N AND DATE CODE.
6. FOR ACTUAL CONTACT LOADINGS, SEE LOADING PATTERN MATING SIDE.
7. SHAPE OF CONNECTOR HOUSING CAN ALTER DEPENDING ON PRODUCTION LOCATION
8. THE PRODUCT (LF) MEETS EUROPEAN UNION DIRECTIVES AND OTHER COUNTRY REGULATIONS AS DESCRIBED IN GS-22-008
9. FOR RECOMMENDED PTH DIMENSIONS REFER DRAWING : BS, A , 201572 , 001
CATALOG NO: HM2P11PD5510----

mat'l. code		SEE NOTE 4		surface		tolerance		projection		product family	
				ISO 1302		ISO 406 ISO 1101				MILLIPACS	
tr		ecn no		dr		date		tolerances unless otherwise specified		title	
A	105-0049	MINI	2005-04-08	angles		0.0.2		MM		MPACS 5+2R STR HDR PF CONN TYPE M	
B	105-0222	MINI	2005-11-08	linear		00.0.1					
C	106-0099	MINI	2006-07-12	0°±1"				scale			
dr		MINI K VANDANIATH		2005-04-08						dwg no	
enr		BUJU K PAUL		2005-04-08						sheet 1 of 1	
chr		BUJU K PAUL		2006-07-12						Size	
appd		BUJU K PAUL		2006-07-12						A3	
sheet		revision		C						type	
index		sheet		1						Product Customer Drawing	