

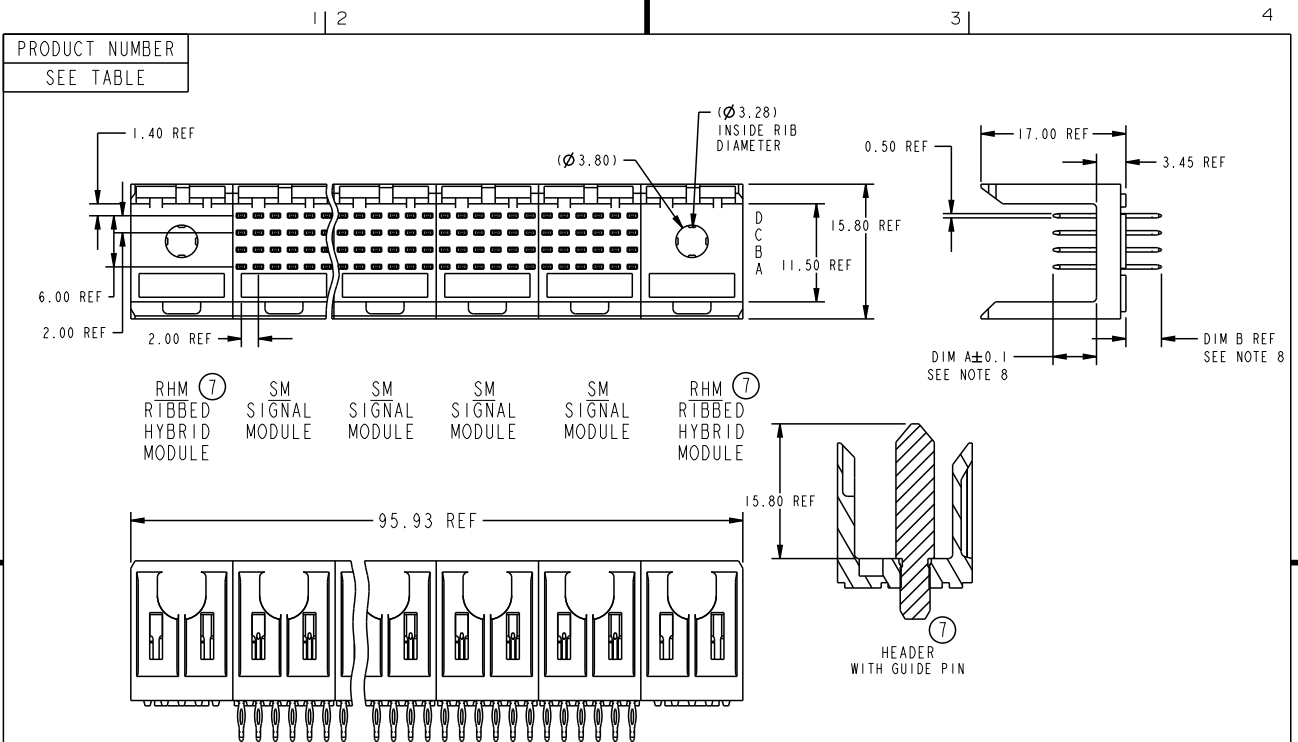
## Excellent Integrated System Limited

Stocking Distributor

Click to view price, real time Inventory, Delivery & Lifecycle Information:

[FCI](#)  
[58399-1001](#)

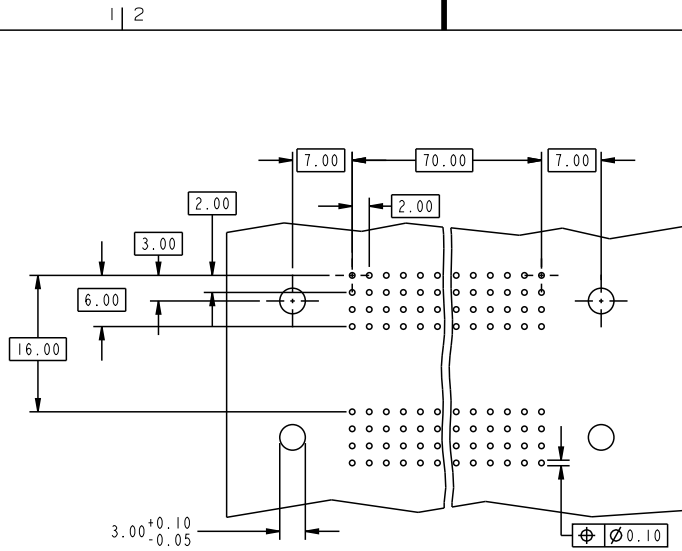
For any questions, you can email us directly:  
[sales@integrated-circuit.com](mailto:sales@integrated-circuit.com)



mat'l code				tolerances unless otherwise specified				CUSTOMER		FCI	
ltr	ecm no.	dr	date					COPY		www.fciconnect.com	
H	DG09-0169	TER	2009-05-25	linear	0.X ±0.3				projection		title MONOBLOCK HEADER ASSEMBLY PRESS-FIT, 4 ROW, SPECIAL
					0.XX ±0.13				MM		
					.XXX ±.051				MM		
C	V03-0022	TAB	01/16/03	angles	0° ±2°				product family		METRAL
D	V03-1319	DAI	12/17/03	dr	T.BRUNGARD	12/04/01	MM		size	dwg no	code
E	V05-0358	VS	07/23/05	engr	M.PERHACS	12/04/01	MM		A	58399	213
F	V06-0498	DCH	2006-05-24	chr	M.PERHACS	12/04/01	scale		sheet		
G	DG09-0069	CenH	2009-03-03	appd	M.PERHACS	12/04/01	3:2		1 of 4		
sheet index	revision sheet	H	H	H	H						
		1	2	3	4						

This document is the property of and embodies CONFIDENTIAL and PROPRIETARY information of FCI. No part of the information shown on this document may be used in any way or disclosed without the written consent of FCI. Copyright FCI.

REV C - 2008-04-18



PRESS-FIT HOLES	DIMENSIONS
HOLE DIAMETER AFTER PLATING	0.65 - 0.80
DRILLED HOLE	0.81-0.86 (0.85 DRILL)
COPPER PLATING	0.025 MIN
TIN PLATING	0.005 - 0.015

KEY (SIGNAL PRESS-FIT)		
CODE	DIMENSIONS	
	DIM "A" MATE	DIM "B" TAIL
1	5.00	4.30
2	5.75	4.30
3	6.50	4.30

REQUIRED PC BOARD LAYOUT  
COMPONENT SIDE

mat'l code		--		tolerances unless otherwise specified		CUSTOMER		FCI		www.fciconnect.com	
lfr	ecm no.	dr	date	linear	0.X ±0.3	projection	COPY	title MONOBLOCK HEADER ASSEMBLY PRESS-FIT, 4 ROW, SPECIAL			
H				linear	0.XX ±0.13	MM	MM	product family	METRAL	code	213
				angles	.XXX ±.051	scale	3:2	size	dwg no	58399	sheet
				dr	T.BRUNGARD 12/04/01						2
				eng	M.PERHACS 12/04/01						
				chr	M.PERHACS 12/04/01						
				appd	M.PERHACS 12/04/01						
sheet index	revision sheet										

This document is the property of and embodies CONFIDENTIAL and PROPRIETARY information of FCI. No part of the information shown on this document may be used in any way or disclosed without the written consent of FCI. Copyright FCI.

PRODUCT NUMBER	DESCRIPTION	PLATING IN PRESS FIT TAIL AREA	PERFORMANCE LEVEL OF PLATING IN CONTACT AREA
58399-N1YYY	STANDARD	TIN LEAD	TELCORDIA CO (NXT)
58399-N5YYY	STANDARD	TIN LEAD	TECORDIA UE (NXT)
58399-1YYY	STANDARD	TIN LEAD	TELCORDIA CO
58399-2YYY	STANDARD	TIN LEAD	TELECOM CLASS
58399-3YYY	STANDARD	TIN LEAD	IEC CLASS 1
58399-5YYY	STANDARD	TIN LEAD	TELCORDIA UE
58399-9YYY	STANDARD	TIN LEAD	TELCORDIA CO
58399-PYYY	STANDARD	TIN LEAD	CUSTOMER SPECIAL
58399-MYYY	STANDARD	TIN LEAD	CUSTOMER SPECIAL
58399-N1YYLFL	LEAD FREE	TIN	TELCORDIA CO (NXT), IEC CLASS 1, SEE NOTES 9 AND 10
58399-N5YYLFL	LEAD FREE	TIN	TECORDIA UE (NXT) SEE NOTES 9 AND 10
58399-1YYLFL	LEAD FREE	TIN	TELCORDIA CO, IEC CLASS 1, SEE NOTES 9 AND 10
58399-2YYLFL	LEAD FREE	TIN	TELECOM CLASS, SEE NOTES 9 AND 10
58399-5YYLFL	LEAD FREE	TIN	TELCORDIA UE, SEE NOTES 9 AND 10
58399-PYYLFL	LEAD FREE	TIN	CUSTOMER SPECIAL
58399-MYYLFL	LEAD FREE	TIN	CUSTOMER SPECIAL

NOTES:


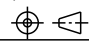
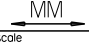
- FOR DIM A AND B SEE SHEET 2 AND UP.
- BODY MATERIAL: LIQUID CRYSTAL POLYMER 30 % GLASS. FLAME RETARDANT ACC. UL 94-V0.
- PIN MATERIAL: PHOSPHOR BRONZE.
- PLATING ON: PRESS-FIT TAIL AREA SEE PRODUCT NUMBER TABLE. PLATING ON CONTACT AREA CONFORMS TO PERFORMANCE LEVEL SHOWN IN TABLE ON SHEET3.
- PRODUCT MARKING: PART NUMBER DESIGNATION & BATCH I.D.
- ALL PRODUCTS WITH PART NUMBERS SHOWN IN SUBSEQUENT TABLES WILL BE PACKAGED IN TUBES. IF TRAY PACKAGING IS REQUIRED, A SUFFIX "P" WILL BE ADDED TO THE END OF THE PART NUMBER. EXAMPLE: XXXXX-XXXX OR XXXXX-XXXXP
- PRODUCT SPECIFICATION: GS-12-180 APPLICATION SPECIFICATION: BUS-20-073
- AFTER INSERTION INTO CIRCUIT BOARD WITH QUALIFIED TOOL.
- THE PRODUCTS WHERE THE PART NUMBERS ENDS IN LF MEET THE EUROPEAN UNION DIRECTIVE AND OTHER COUNTRY REGULATIONS AS DESCRIBED IN GS-12-008.
- ALL PRODUCTS EXCEPT THOSE WITH PART NUMBERS CONTAINING 58399-N1--- OR 58399-N5--- WILL WITHSTAND EXPOSURE TO 260 DEGREES C FOR 60 SECONDS IN A CONVECTION, INFRA-RED OR VAPOR PHASE REFLOW OVEN. PART NUMBERS 58399-N1--- AND 58399-N5--- WILL NOT WITHSTAND REFLOW AND THE Au CONTACT SURFACE OF THE CONTACTS SHALL BE EXPOSED TO A MAXIMUM 140 DEGREES C FOR NO LONGER THAN 15 SECONDS IN A WAVE SOLDER APPLICATION.

mat'l code		--		tolerances unless otherwise specified		CUSTOMER		FCI		www.fciconnect.com	
ltr	ecn no.	dr	date	linear	0.X ±0.3	COPY		projection		title	
H					0.XX ±0.13	projection		MONOBLOCK HEADER ASSEMBLY		PRESS-FIT, 4 ROW, SPECIAL	
				angles	.XXX ±.051	MM		product family		METRAL	
				dr	0° ±2°	3:2		size		code	
				eng	T.BRUNGARD 12/04/01	A		58399		213	
				chr	M.PERHACS 12/05/01					sheet	
				appd	M.PERHACS 12/04/01					3	
sheet index	revision sheet										



This document is the property of and embodies CONFIDENTIAL and PROPRIETARY information of FCI. No part of the information shown on this document may be used in any way or disclosed without the written consent of FCI. Copyright FCI.

METRAL P/N  58399-X001 AND 58399-X001LF	ROW	RHM					SM					SM					SM					SM					SM					RHM																	
	D	1	2	3	4	5	6	7	8	9	10	11	12	13	14	15	16	17	18	19	20	21	22	23	24	25	26	27	28	29	30	31	32	33	34	35	36	37	38	39	40	41	42	43	44	45	46	47	48
	C							-	2	2	2	-	-	-	2	2	2	-	-	-	2	2	2	-	-	-	2	2	2	-	-	-	2	2	2	-	-	-	2	2	2	-	-	-	2	2	2	-	-
	B							-	2	2	2	-	-	-	2	2	2	-	-	-	2	2	2	-	-	-	2	2	2	-	-	-	2	2	2	-	-	-	2	2	2	-	-	-	2	2	2	-	-
	A							-	2	2	2	-	-	-	2	2	2	-	-	-	2	2	2	-	-	-	2	2	2	-	-	-	2	2	2	-	-	-	2	2	2	-	-	-	2	2	2	-	-

mat'l code				tolerances unless otherwise specified				CUSTOMER		 www.fciconnect.com	
lfr	ecn no.	dr	date	linear	0.X ±0.3	projection	COPY		title		
H				angles	0.XX ±0.13		MONOBLOCK HEADER ASSEMBLY		PRESS-FIT, 4 ROW, SPECIAL		
				dr	.XXX ±.051		product family		METRAL		
				eng	0° ±°	scale	size		dwg no		
				chr	T.BRUNGARD 12/04/01	1:1	A		58399		
				appd	M.PERHACS 12/04/01				code		
sheet index	revision sheet				M.PERHACS 12/04/01				213		
									sheet		
									4		

This document is the property of and embodies CONFIDENTIAL and PROPRIETARY information of FCI. No part of the information shown on this document may be used in any way or disclosed without the written consent of FCI. Copyright FCI.