

## Excellent Integrated System Limited

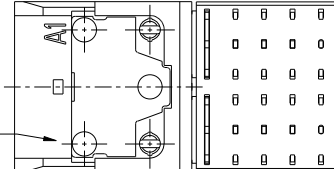
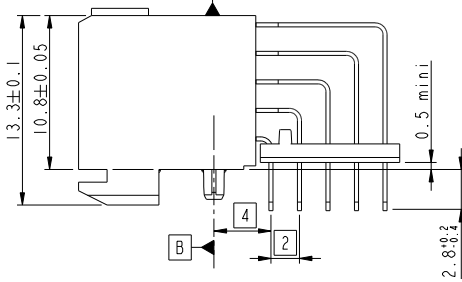
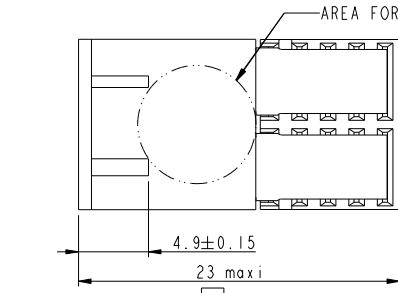
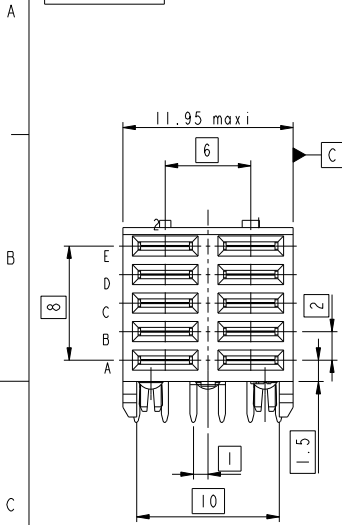
Stocking Distributor

Click to view price, real time Inventory, Delivery & Lifecycle Information:

[FCI](#)  
[63793-101LF](#)

For any questions, you can email us directly:  
[sales@integrated-circuit.com](mailto:sales@integrated-circuit.com)

PRODUCT NUMBER  
SHEET 2

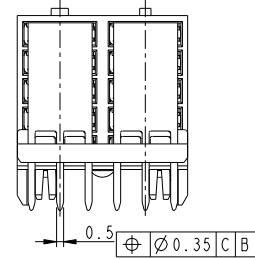


Hold down feature  
See detailed P/N  
Sheet 2

NOTES :

1-Housing material: Glass filled thermoplastic LCP flame retardant per UL 94 V0 color : Naturel (white)

2-Wafer material: Glass filled thermoplastic flame retardant UL 94 V0 -color : black



NOTE : RoHS INFORMATION

- The LF product meets European Directives and other country regulations as described in GS-22-008
- The housing will withstand exposure to 260°C peak temperature for 30 s in a convection, infra red or vapor reflow oven
- See applications notes/procedures if they are available
- Packaging spec: See GS-14-920

Copyright FCI

rev	ecn no	dr	date
G	DG09-0390	Cenh	2009-12-15
H	DG09-0399	Cenh	2009-12-23
C	LS05-0124	MLE	2005-12-12
D	LS06-0084	LGO	2006-06-30
E	DG09-0253	Cenh	2009-08-06
F	DG09-0271	Cenh	2009-08-19

www.fciconnect.com		surface	ISO 1302	tolerance std	ISO 406	ISO 1101	projection	mm
		ANGULAR	LINEAR	0.x	±0.3	0.xx	size	Scale
		0° ±2°		0.xxx	±0.1		A3	4:1
		Product family		METRAL		Spec ref		
FCI		5 x 6 RECEPTACLE ASSY		63793		Rev.		
catalog no		63793-101		CUSTOMER		sheet 1 of 3		

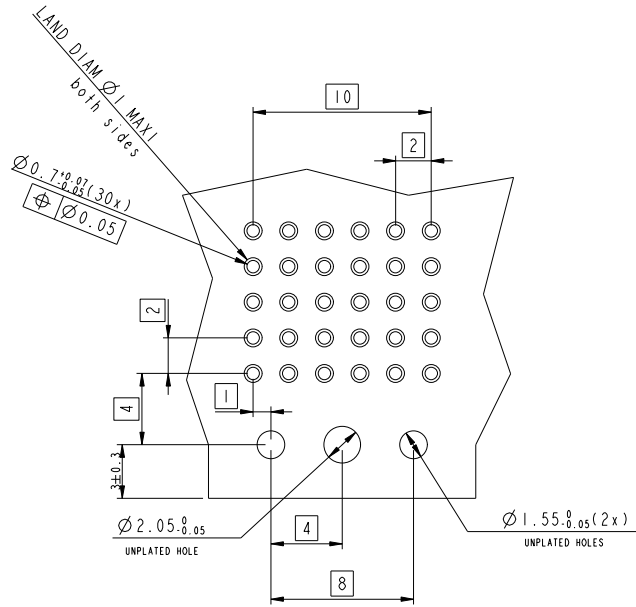
PDM: Rev:H

STATUS Released

Printed: Jul 29, 2010

PRODUCT NUMBER	PERFORMANCE LEVEL	HOLD DOWN FEATURE
63793-101LF	TELCORDIA CO	WITH
63793-101	TELCORDIA CO	
63793-102LF	TELCORDIA CO	WITHOUT

RECOMMENDED PC BOARD LAYOUT FOR 63793-102LF



Copyright FCI.

www.fciconnect.com			surface --	tolerance std	projection	mm
			ISO 1302	ISO 406	ISO 1101	
TOLERANCES UNLESS OTHERWISE SPECIFIED					size	Scale
Dr	M Lenoir	2001-10-15	ANGULAR	0.x	±0.3	4:1
Eng	Cenh	2001-10-15	LINEAR	0.xx	±0.1	
Chr	Ph Legare	2001-10-15	0° ±z°	0.xxx	±0.05	ECN
Appr	Ph Legare	2001-10-15	Product family	METRAL	Spec ref	--
			5 x 6 RECEPTACLE ASSY		dwg no	63793
			FEMALE POWER PIP		Rev.	H
catalog no			63793-101		CUSTOMER	sheet 2 of 3

REV C - 2006-02-28

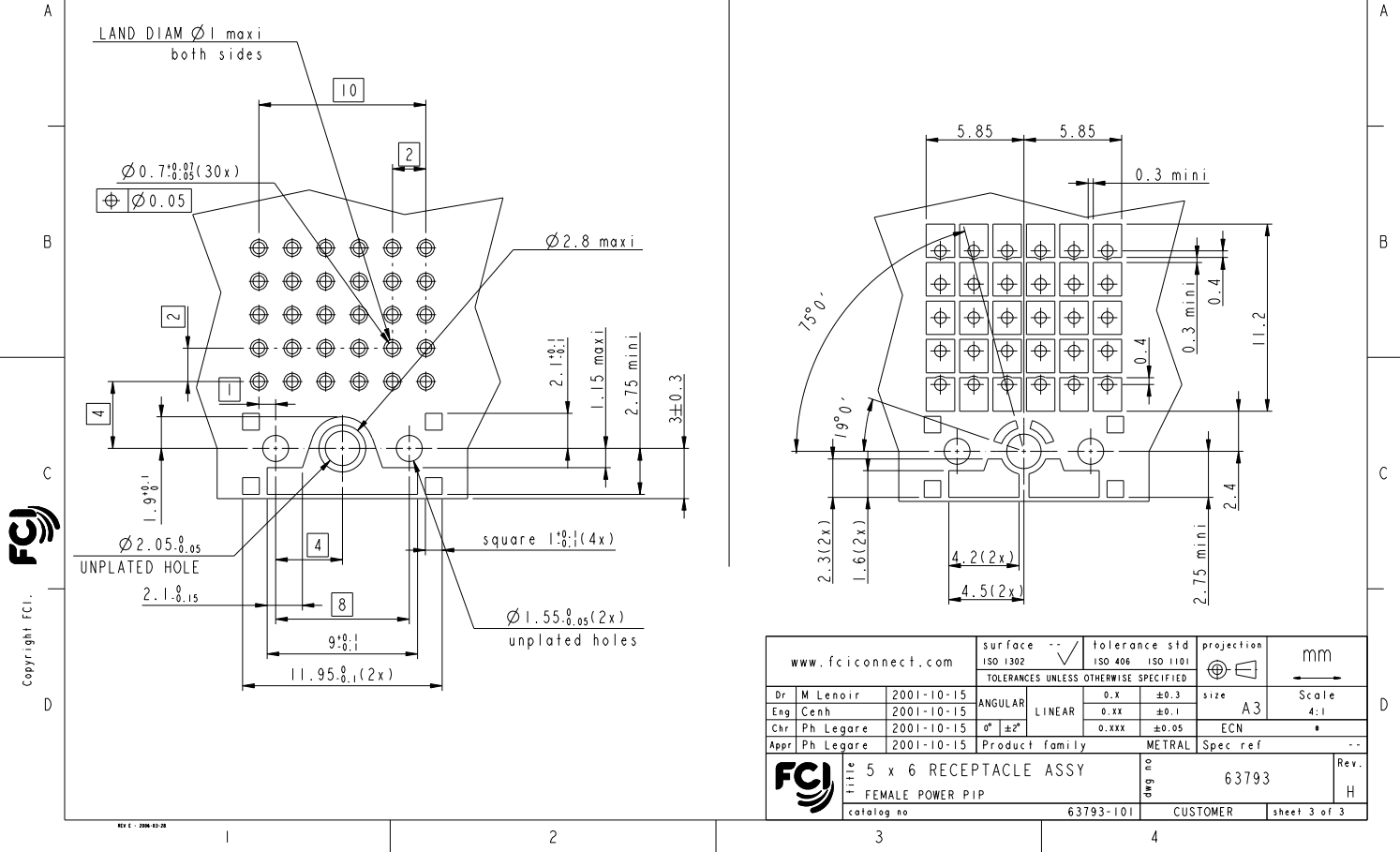
PDM: Rev:H

STATUS: Released

Printed: Jul 29, 2010

RECOMMENDED PC BOARD LAYOUT FOR 63793-101(LF)

RECOMMENDED STENCIL LAYOUT FOR 63793-101(LF)



Copyright FCI.

www.fciconnect.com			surface	ISO 1302	tolerance std	ISO 406	ISO 1101	projection	mm
			TOLERANCES UNLESS OTHERWISE SPECIFIED						
Dr	M Lenoir	2001-10-15	ANGULAR		0.x	±0.3	size		Scale
Eng	Cenh	2001-10-15	LINEAR		0.xx	±0.1	A3		4:1
Chr	Ph Legare	2001-10-15	0°	±2°	0.xxx	±0.05	ECN		*
Appr	Ph Legare	2001-10-15	Product family		METRAL		Spec ref		--
FCI			5 x 6 RECEPTACLE ASSY			63793		Rev.	
			FEMALE POWER PIP			H			
catalog no			63793-101			CUSTOMER		sheet 3 of 3	