

Excellent Integrated System Limited

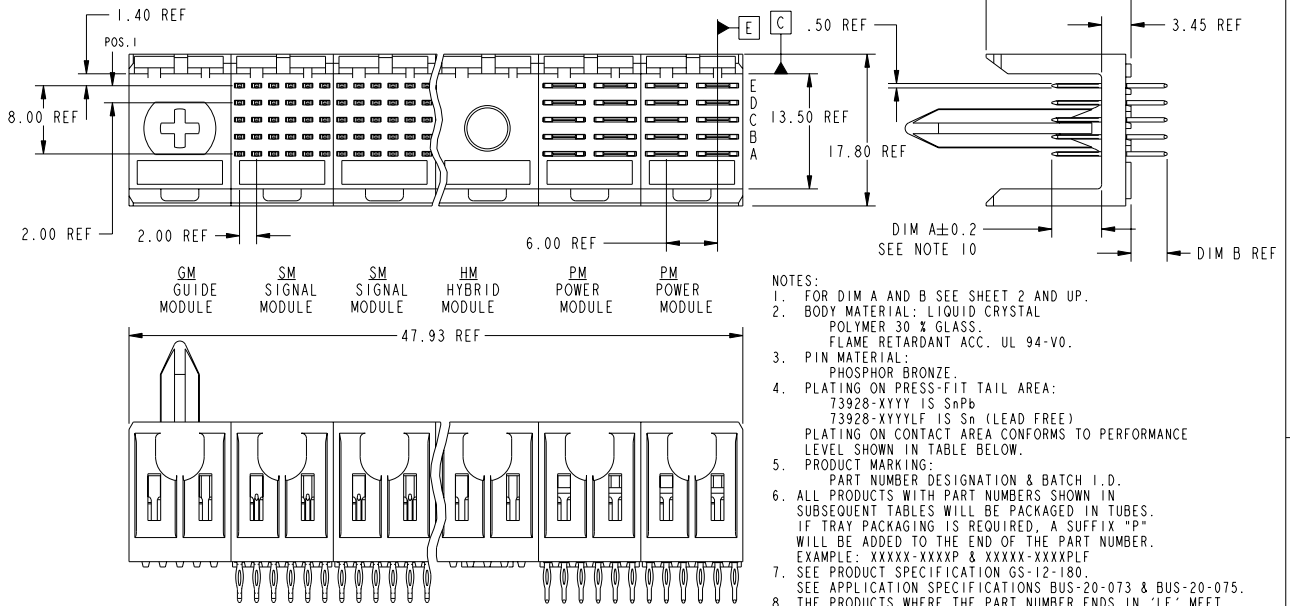
Stocking Distributor

Click to view price, real time Inventory, Delivery & Lifecycle Information:

[FCI](#)
[73928-1002](#)

For any questions, you can email us directly:
sales@integrated-circuit.com

PRODUCT NUMBER
73928-XXXX
73928-XXXXLF



- NOTES:
- FOR DIM A AND B SEE SHEET 2 AND UP.
 - BODY MATERIAL: LIQUID CRYSTAL POLYMER 30 % GLASS. FLAME RETARDANT ACC. UL 94-V0.
 - PIN MATERIAL: PHOSPHOR BRONZE.
 - PLATING ON PRESS-FIT TAIL AREA: 73928-XXXX IS SnPb 73928-XXXXLF IS Sn (LEAD FREE) PLATING ON CONTACT AREA CONFORMS TO PERFORMANCE LEVEL SHOWN IN TABLE BELOW.
 - PRODUCT MARKING: PART NUMBER DESIGNATION & BATCH I.D.
 - ALL PRODUCTS WITH PART NUMBERS SHOWN IN SUBSEQUENT TABLES WILL BE PACKAGED IN TUBES. IF TRAY PACKAGING IS REQUIRED, A SUFFIX "P" WILL BE ADDED TO THE END OF THE PART NUMBER. EXAMPLE: XXXXX-XXXXP & XXXXX-XXXXPLF
 - SEE PRODUCT SPECIFICATION GS-12-180.
 - SEE APPLICATION SPECIFICATIONS BUS-20-073 & BUS-20-075.
 - THE PRODUCTS WHERE THE PART NUMBER ENDS IN 'LF' MEET THE EUROPEAN UNION DIRECTIVES AND OTHER COUNTRY REGULATIONS AS DESCRIBED IN GS-22-008.
 - ALL PRODUCTS WILL WITHSTAND EXPOSURE TO 260°C FOR 60 SECONDS IN A CONVECTION, INFRA-RED OR VAPOR PHASE REFLOW OVEN.
 - AFTER INSERTION INTO CIRCUIT BOARD WITH QUALIFIED TOOL.

PLATING IN CONTACT AREA

DASH NUMBER	PERFORMANCE LEVEL
-1YYY	TELCORDIA CO & IEC CLASS I
-2YYY	TELECOM CLASS
-3YYY	TELCORDIA CO & IEC CLASS I
-5YYY	TELCORDIA UE
-9YYY	TELCORDIA CO & IEC CLASS I
-1YYYYLF	TELCORDIA CO & IEC CLASS I
-2YYYYLF	TELECOM CLASS
-5YYYYLF	TELCORDIA UE

mat'l code				tolerances unless otherwise specified		CUSTOMER		FCI	
ltr	ecm no.	dr	date	linear	0.X ± 0.3	COPY	www.fciconnect.com		
A	V03-0540	LP	5/14/03	linear	0.xx ± 0.13	projection	title MONOBLOCK HEADER ASSEMBLY		
B	V03-1276	HTB	12/01/03	angles	0.xxx ± .051	MM	product family METRAL code 213		
C	V05-0184	TAB	3/11/05	angles	0° ± 2°	MM	size dwg no 73928 sheet 1 of 3		
D	V05-0889	DAl	9/27/05	chr	L.POTTEIGER 5/14/03	MM	product family METRAL code 213		
E	V06-0544	DCH	2006-06-07	chr	M.GRAY 5/14/03	MM	size dwg no 73928 sheet 1 of 3		
				appd	M.GRAY 5/14/03	MM	product family METRAL code 213		
sheet index	revision sheet	E	E	E		MM	size dwg no 73928 sheet 1 of 3		
		1	2	3		MM	product family METRAL code 213		

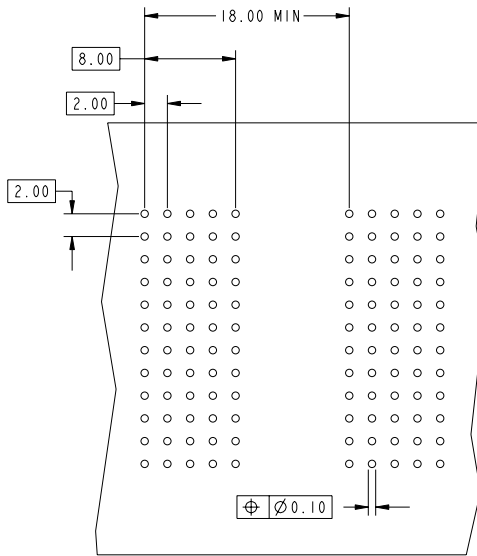
This document is the property of and embodies CONFIDENTIAL and PROPRIETARY information of FCI. No part of the information shown on this document may be used in any way or disclosed without the written consent of FCI. Copyright FCI.

KEY (SIGNAL PRESS-FIT)

CODE	DIMENSIONS	
	DIM "A" MATE	DIM "B" TAIL
1	5.00	4.35
3	6.50	4.30
4	7.25	4.30
19	8.00	4.30

KEY (POWER PRESS-FIT)

CODE	DIMENSIONS	
	DIM "A" MATE	DIM "B" TAIL
P01	6.50	4.30
P02	7.25	4.30
P03	8.00	4.30
P04	6.50	13.60
P05	7.25	13.60
P06	8.00	13.60



REQUIRED PC BOARD LAYOUT
COMPONENT SIDE

SEE PRINT 58351 FOR ADDITIONAL
PCB INFORMATION.

mat'l code				tolerances unless otherwise specified		CUSTOMER		FCI		www.fciconnect.com	
lfr	ecm no.	dr	date	linear	0.X ± 0.3	COPY		title			
E					0.XX ± 0.13	projection		MONOBLOCK HEADER ASSEMBLY			
				angles	0.XXX ± .051	MM		PRESS-FIT, 5 ROW 3 MOD			
				dr	0° ± 2°	scale		product family		code	
				eng	L.POTTEIGER 5/14/03	3:2		METRAL		213	
				chr	M.GRAY 5/14/03	A		size		sheet	
				appd	M.GRAY 5/14/03			73928		2	
sheet index	revision sheet							cage code		4	
								22526			

This document is the property of and embodies
 CONFIDENTIAL and PROPRIETARY information of FCI.
 No part of the information shown on this
 document may be used in any way or disclosed
 without the written consent of FCI.
 Copyright FCI.

METRAL P/N	ROW	PM					SM						PM						
		1	2	3	4	5	6	7	8	9	10	11	12	13	14	15	16	17	18
73928-X001	E	P06				P06	I	I	I	I	I	I					P06		P06
	D	P06				P06	I	I	I	I	I	I					P06		P06
73928-X001LF	C	P05				P05	I	I	I	I	I	I					P05		P05
	B	P05				P05	I	I	I	I	I	I					P05		P05
	A	P04				P04	I	I	I	I	I	I					P04		P04

METRAL P/N	ROW	PM					SM						PM						
		1	2	3	4	5	6	7	8	9	10	11	12	13	14	15	16	17	18
73928-X002	E	P01				P01	I	I	I	I	I	I					P01		P01
	D	P02				P02	I	I	I	I	I	I					P02		P02
73928-X002LF	C	P02				P02	I	I	I	I	I	I					P02		P02
	B	P03				P03	I	I	I	I	I	I					P03		P03
	A	P03				P03	I	I	I	I	I	I					P03		P03

This document is the property of and embodies CONFIDENTIAL and PROPRIETARY information of FCI. No part of the information shown on this document may be used in any way or disclosed without the written consent of FCI. Copyright FCI.



mat'l code				tolerances unless otherwise specified				CUSTOMER		FCI		www.fciconnect.com	
lfr	ecn no.	dr	date	linear	0.X ±0.3	projection	COPY	title		MONOBLOCK HEADER ASSEMBLY		code	
E					0.XX ±0.13			size		METRAL		213	
				angles	0.XXX ±.05I			dwg no		73928		sheet	
				dr	0° ±2°			scale		A		3	
				eng	L.POTTEIGER 5/14/03			sheet index		revision sheet			
				chr	M.GRAY 5/14/03			cage code		22526			
				appd	M.GRAY 5/14/03			Pro/E		3		4	