

Excellent Integrated System Limited

Stocking Distributor

Click to view price, real time Inventory, Delivery & Lifecycle Information:

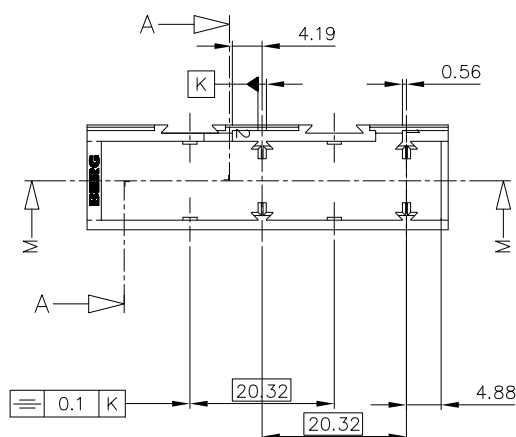
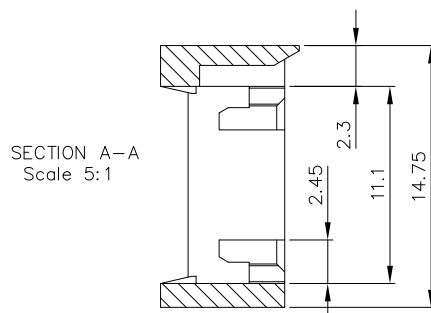
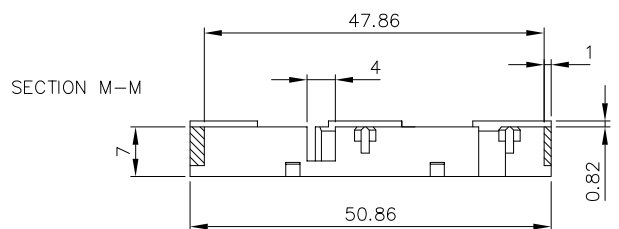
[FCI](#)

[85261-001LF](#)

For any questions, you can email us directly:

sales@integrated-circuit.com

PRODUCT NUMBER	MATERIAL	COLOUR	FLAME RETARDANT
85261-001	PPO	BLACK	UL-94-V1



NOTES:-

1. THIS PRODUCT MEETS EUROPEAN UNION DIRECTIVES AND OTHER COUNTRY REGULATIONS AS DESCRIBED IN GS-22-008.
2. LEADFREE OR RoHS DIRECTIVE LABELLING TO BE PROVIDED AS PER GS-14-920.
3. " LF " SUFFIX TO PRODUCT NUMBER FOR RoHS COMPATIBLE/ LEADFREE VERSION.
4. PARTS WITH AND WITHOUT "LF " SUFFIX ARE FORM-FIT AND FUNCTIONALLY IDENTICAL.
" LF " SUFFIX PROVIDED FOR PART NUMBER STANDARDISATION OF PART THAT MEETS RoHS REQUIREMENTS.

mat'l code		SEE NOTE		surface finish		ISO 1302		tolerance		projection		product family	
				<input checked="" type="checkbox"/> linear		<input checked="" type="checkbox"/> circular		10-190		10-190		Backpanel	
tfr ecn no dr date		REV 1866-05-27		angles unless otherwise specified								title	
A 1460357		RBE		linear				mm				LOCKING FRAME	
B 105-0248 MIN		LUA 2000-05-27						scale =				Max 3x16	
C 105-0123 MIN		2000-05-27										dwg no sheet 1 of 1 size	
E 105-0248 MIN		2000-05-27		D L'EGRAND 2000-10-10								A2	
E 105-0083 MIN		2000-05-27		J.P. NOTEAU 2000-06-01								85261	
				CHP 2000-06-01								type CUSTOMER Drawing	
				APPR REVISED DESIGNED 2000-06-01									
sheet revision E		sheet 1											