

## Excellent Integrated System Limited

Stocking Distributor

Click to view price, real time Inventory, Delivery & Lifecycle Information:

[Harting](#)  
[09260242981](#)

For any questions, you can email us directly:  
[sales@integrated-circuit.com](mailto:sales@integrated-circuit.com)

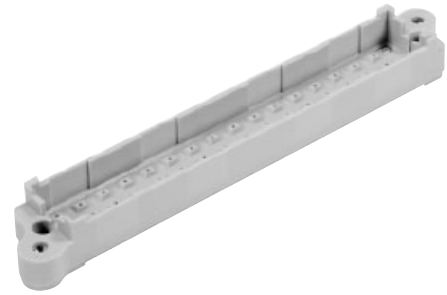
# Pin shroud



Number of contacts

# 48

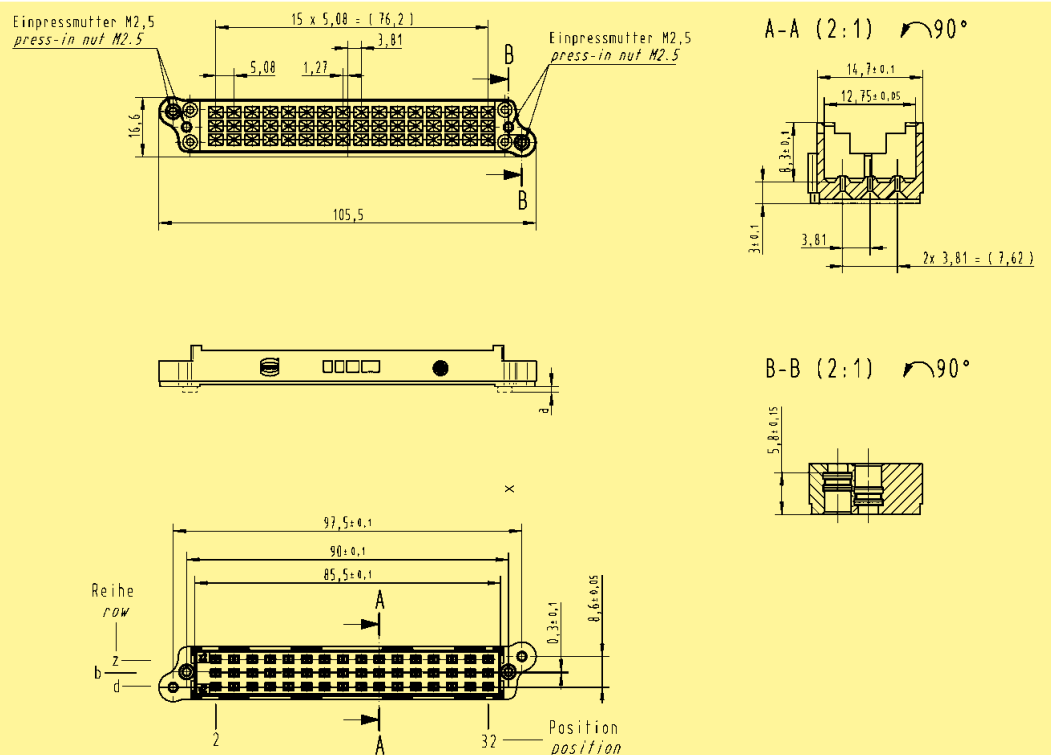
Pin shrouds  
for type F "low profile"  
with press-in pins 13 mm



Identification	pcb-thickness ± 10 %	Dimension X ± 0.1	Part No.
Pin shrouds suitable for shell housing D20			
without locking levers with press-in nuts	1.6 - 2.4	1.6	09 06 002 9922
without locking levers with press-in nuts	3.2 - 4.0	0	09 06 002 9921

DIN Power  
up to 6 A

## Dimensions



Dimensions in mm