

## Excellent Integrated System Limited

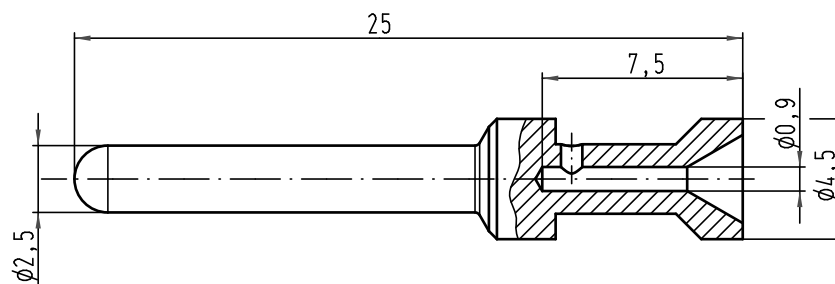
Stocking Distributor

Click to view price, real time Inventory, Delivery & Lifecycle Information:

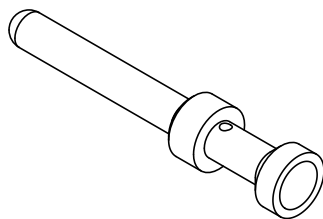
[Harting](#)  
[09330006163](#)



For any questions, you can email us directly:

[sales@integrated-circuit.com](mailto:sales@integrated-circuit.com)



Werkstoff/material: Konstantan/constantan  
Leiterquerschnitt/wire gauge: 0,14-0,37mm<sup>2</sup> / AWG26-22  
Abisolierlänge der Litze/stripping length: 7,5



			All Dimensions in mm Original Size DIN A 4			Techn. Character.			Nicht tolerierte Maß/Free size tolerances		
				Dat.	Name	Maßstab/ Scale  5:1	Han E Kontaktstift crimp/ <i>Han E male contact crimp</i>				
			Detail.	28.10.09	Ho						
			Insp.		Sch						
			Stand.								
			A			HARTING Electric GmbH & Co. KG			TB 09 33 000 6163	Blatt/ page  /	
			Mod.	Dat.	Name	D-32339 Espelkamp					
							Sub.				