

Excellent Integrated System Limited

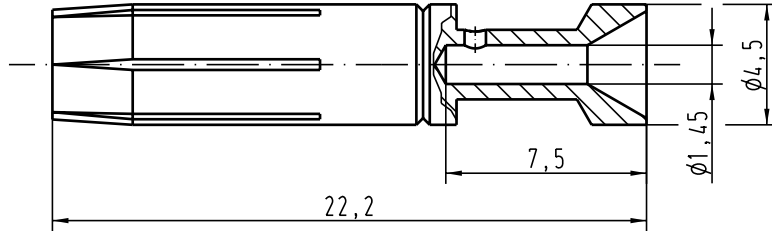
Stocking Distributor

Click to view price, real time Inventory, Delivery & Lifecycle Information:

[Harting](#)
[09330006405](#)



For any questions, you can email us directly:
sales@integrated-circuit.com

Alle Rechte vorbehalten/ All rights reserved



Leiterquerschnitt/ wire gauge : 0,75-1mm² /AWG18

Oberfläche/ surface : Gold Tec (NiP+Au)

 All Dimensions in mm Original Size DIN A 4			Techn. Character.			Nicht lotierte Masse/ free size tolerances	
				Dat.	Name	Maststab/Scale 5:1	Han E-Kontaktbuchse-c <i>Han E-female contact</i>
	Detail.	14.05.04	Ste				
	Insp.		KR				
	Stand.						
411022			HARTING Electric GmbH & Co. KG			TB 09 33 000 6405	Blatt/ page
Mod.	Dat.	Name	D-32339 Espelkamp				