

Excellent Integrated System Limited

Stocking Distributor

Click to view price, real time Inventory, Delivery & Lifecycle Information:

[Sanken](#)
[SLA6022](#)

For any questions, you can email us directly:

sales@integrated-circuit.com

SLA6022

PNP + NPN Darlington
 3-phase motor drive

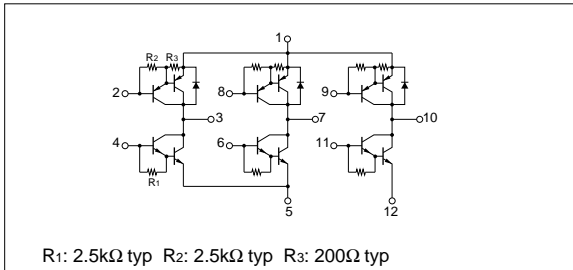
External dimensions ...SLA (12-pin)

Absolute maximum ratings

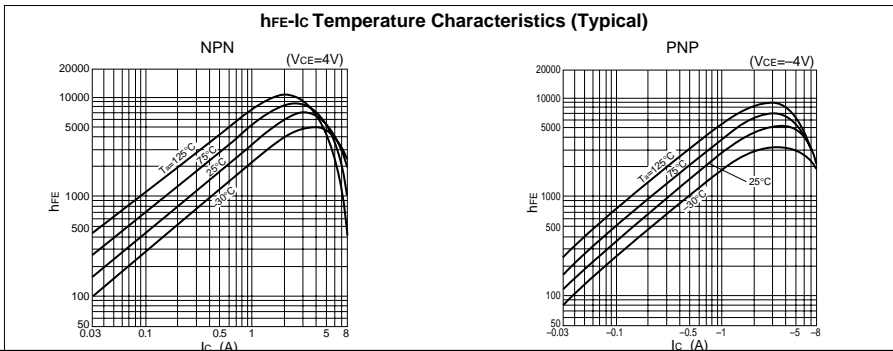
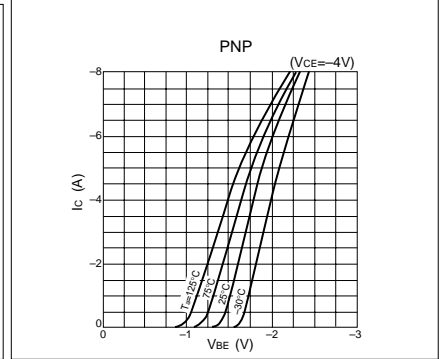
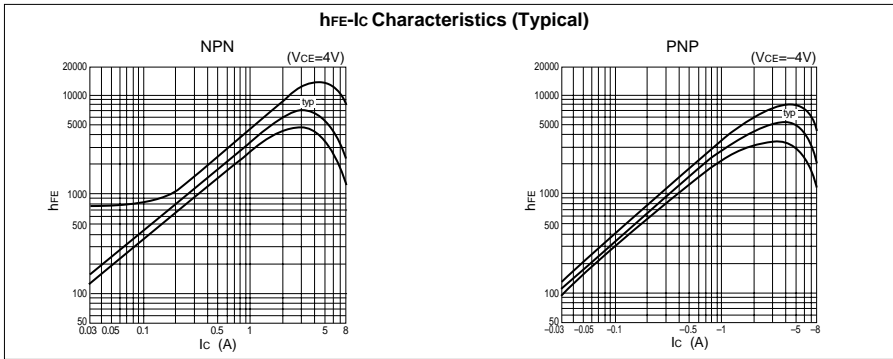
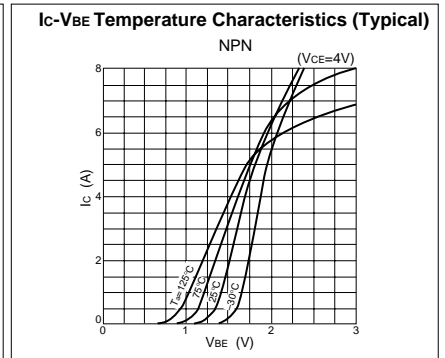
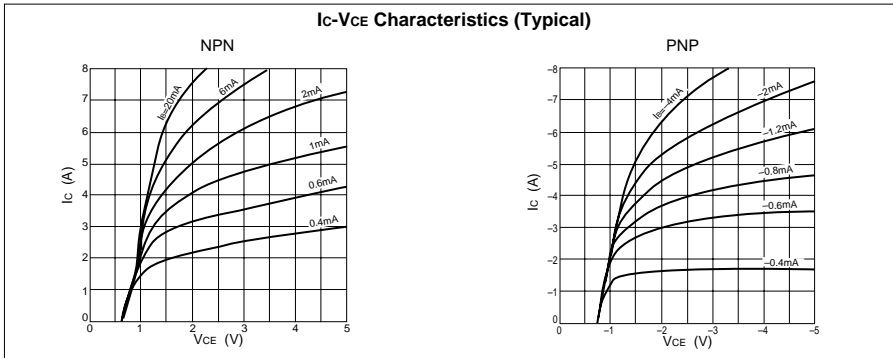
(Ta=25°C)

Symbol	Ratings		Unit
	NPN	PNP	
V _{CB0}	100	-100	V
V _{CE0}	80	-100	V
V _{EB0}	6	-6	V
I _C	5	-5	A
I _B	0.5	-0.5	A
P _T	5 (Ta=25°C)		W
	25 (Tc=25°C)		
V _{ISO}	1000 (Between fin and lead pin, AC)		V _{rms}
T _j	150		°C
T _{stg}	-40 to +150		°C
θ _{j-c}	5		°C/W

Equivalent circuit diagram



Characteristic curves



SLA6022

Electrical characteristics

($T_a=25^\circ\text{C}$)

Symbol	NPN					PNP				
	Specification			Unit	Conditions	Specification			Unit	Conditions
	min	typ	max			min	typ	max		
I_{CBO}			10	μA	$V_{CB}=100\text{V}$			-10	μA	$V_{CB}=-100\text{V}$
I_{EBO}			10	μA	$V_{EB}=6\text{V}$			-10	mA	$V_{EB}=-6\text{V}$
V_{CEO}	80			V	$I_C=10\text{mA}$	-100			V	$I_C=-10\text{mA}$
hFE	2000				$V_{CE}=4\text{V}, I_C=3\text{A}$	2000				$V_{CE}=-4\text{V}, I_C=-3\text{A}$
$V_{CE}(\text{sat})$			1.5	V	$I_C=3\text{A}, I_B=6\text{mA}$			-1.5	V	$I_C=-3\text{A}, I_B=-6\text{mA}$
V_{FEC}				V				1.3	V	$I_{FEC}=1\text{A}$
t_{rr}				μs			2.0		μs	$I_{FEC}=\pm 100\text{mA}$

Characteristic curves

