

Excellent Integrated System Limited

Stocking Distributor

Click to view price, real time Inventory, Delivery & Lifecycle Information:

[Sanken](#)
[STA408A](#)

For any questions, you can email us directly:

sales@integrated-circuit.com

STA408A

PNP Darlington
 General purpose

External dimensions STA (10-pin)

Absolute maximum ratings

($T_a=25^\circ\text{C}$)

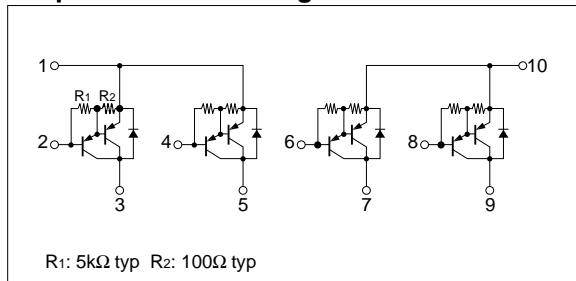
Symbol	Ratings	Unit
V_{CB0}	-120	V
V_{CE0}	-120	V
V_{EB0}	-6	V
I_C	-4	A
I_B	-1	A
P_T	4 ($T_a=25^\circ\text{C}$)	W
	20 ($T_c=25^\circ\text{C}$)	
T_j	150	$^\circ\text{C}$
T_{stg}	-40 to +150	$^\circ\text{C}$

Electrical characteristics

($T_a=25^\circ\text{C}$)

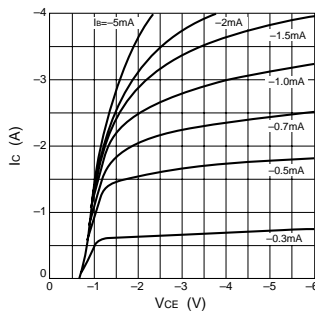
Symbol	Specification			Unit	Conditions
	min	typ	max		
I_{CBO}			-10	μA	$V_{CB}=-120\text{V}$
I_{EBO}			-10	mA	$V_{EB}=-6\text{V}$
V_{CE0}	-120			V	$I_C=-10\text{mA}$
h_{FE}	2000				$V_{CE}=-4\text{V}$, $I_C=-2\text{A}$
$V_{CE(sat)}$			-1.5	V	$I_C=-2\text{A}$, $I_B=-4\text{mA}$
$V_{BE(sat)}$			-2.5	V	

Equivalent circuit diagram

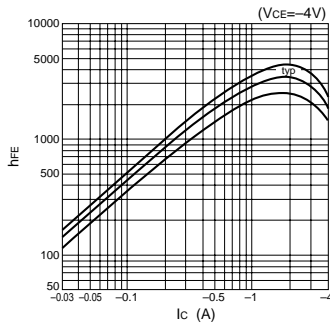


Characteristic curves

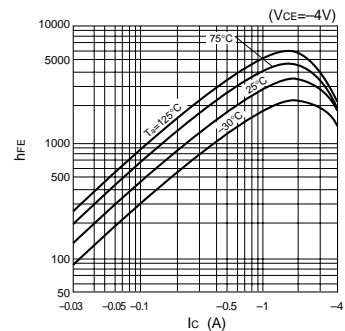
I_C - V_{CE} Characteristics (Typical)



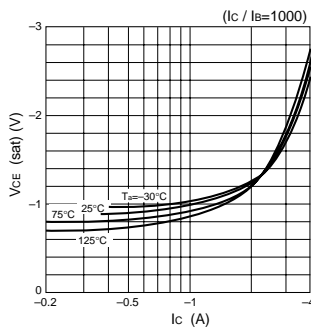
h_{FE} - I_C Characteristics (Typical)



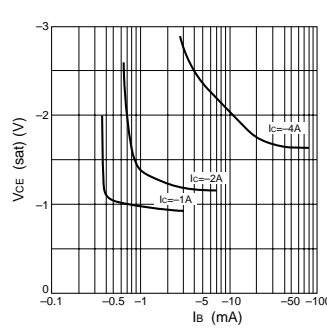
h_{FE} - I_C Temperature Characteristics (Typical)



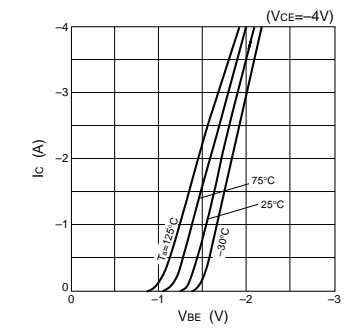
$V_{CE(sat)}$ - I_C Temperature Characteristics (Typical)



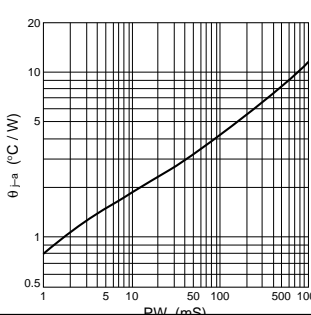
$V_{CE(sat)}$ - I_B Characteristics (Typical)



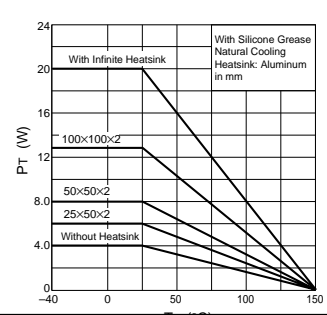
I_C - V_{BE} Temperature Characteristics (Typical)



θ_{j-a} -PW Characteristics



P_T - T_a Characteristics



Safe Operating Area (SOA)

