

Excellent Integrated System Limited

Stocking Distributor

Click to view price, real time Inventory, Delivery & Lifecycle Information:

[Bel Fuse Inc.](#)
[0811-2X8R-19-F](#)

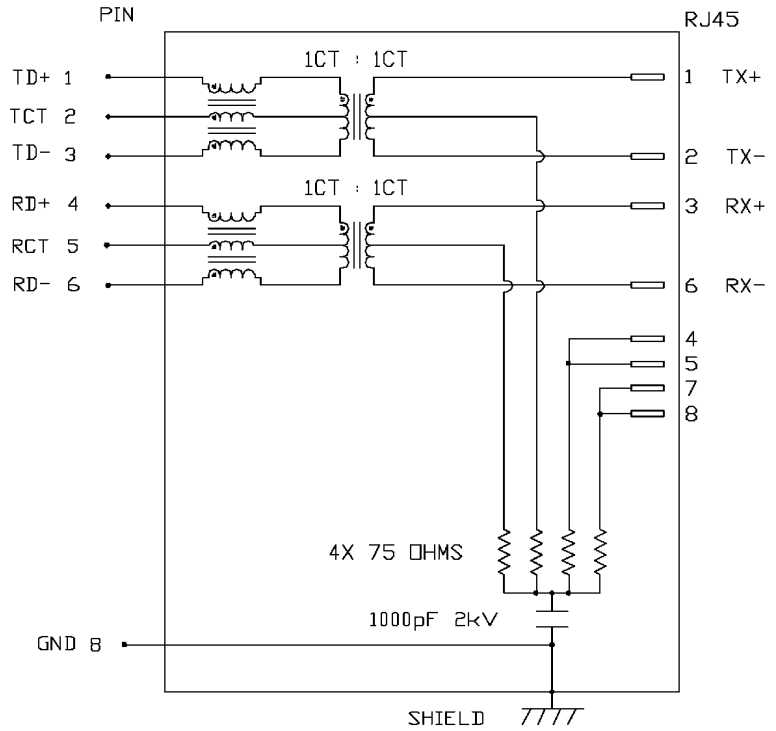
For any questions, you can email us directly:
sales@integrated-circuit.com

THE INFORMATION CONTAINED HEREIN IS CONSIDERED PROPRIETARY TO BEL FUSE INC. AND SHALL NOT BE COPIED, REPRODUCED OR DISCLOSED WITHOUT THE WRITTEN APPROVAL OF BEL FUSE INC.

ELECTRICAL CHARACTERISTICS @ 25°C

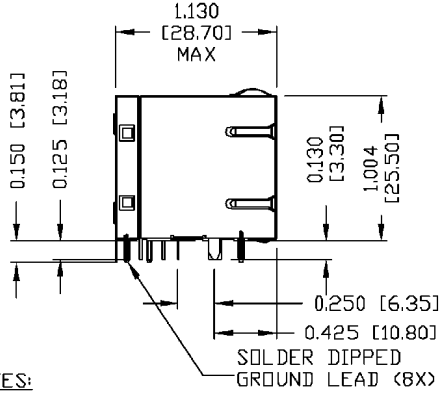
RETURN LOSS (MIN.)		
1MHz-30MHz	-18 dB	
60MHz-80MHz	-12 dB	
INSERTION LOSS		
100KHz TO 100MHz	-1.1 dB	
OCL @ 0.1V, 100KHz		
8mA DC BIAS	350μH MIN.	
URNS RATIO	1CT : 1CT ±3%	
XTALK		
100KHz TO 100MHz	-35 dB MIN.	

SCHEMATIC



DRWN	DATE	TITLE	PART NO. / DRAWING NO.	STANDARD DIM.	[] METRIC DIM. AS REFERENCE	 COMPONENTS TO CONSTRUCT PLANET	
DE	12-12-04	2X8 MagJack™ (4 Cores)	0811-2X8R-19	TOL. IN INCH	UNIT : INCH [mm]		REV. : E
CHKD	DATE		FILE NAME	.X	SCALE : N/A		SIZE : A4
CHUNG	12-12-04		08112X8R19E.DWG	.XX			PAGE : 2
FORM NO. - ENG02082001				.XXX			

THE INFORMATION CONTAINED HEREIN IS CONSIDERED PROPRIETARY TO BEL FUSE INC. AND SHALL NOT BE COPIED, REPRODUCED OR DISCLOSED WITHOUT THE WRITTEN APPROVAL OF BEL FUSE INC.

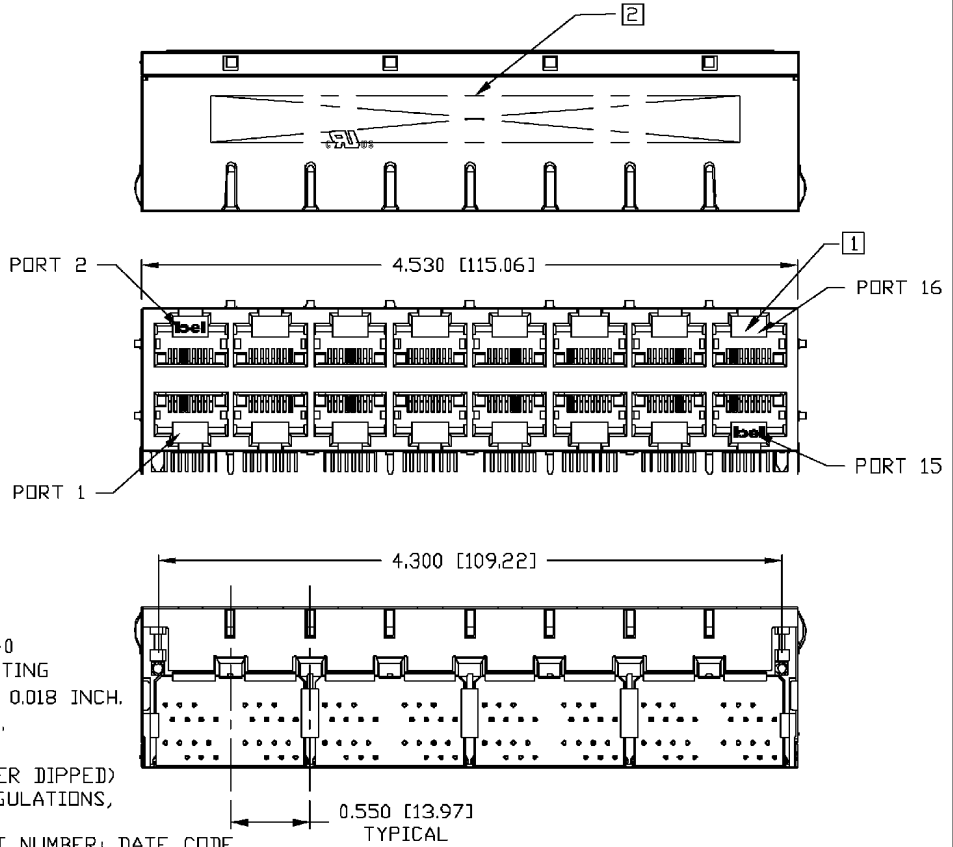


NOTES:

- PLASTIC HOUSING: THERMOPLASTIC PBT
FLAMMABILITY RATING UL 94V-0
- CONTACT PLATING: 50 MICRO-INCH HARD GOLD PLATING
- OUTPUT PINS: TIN-COATED COPPER WIRE, DIA 0.018 INCH.
- SOLDERABILITY: PER MIL STD. 202, METHOD 208.
- METAL SHIELD: NICKEL PLATED COPPER ALLOY.
(ALL GROUND LEADS ARE SOLDER DIPPED)

- 1. JACK CAVITY CONFORMS TO FCC RULES AND REGULATIONS, PART 68 SUBPART F.
- 2. MARKED PART WITH MFG. LOGO, MFG. NAME, PART NUMBER, DATE CODE.

UL US UL RECOGNIZED - FILE #E196366 AND E169987.

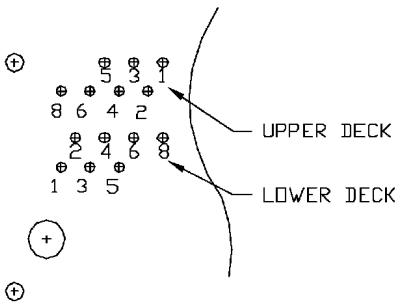
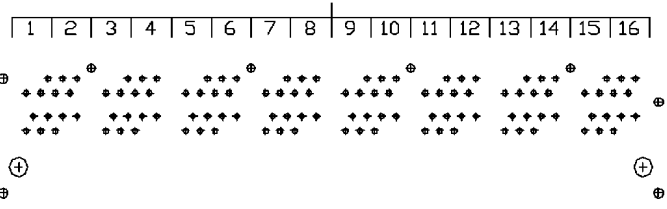


DRWN LING	DATE 12-12-04	TITLE 2XB MagJack™ (4 cores)	PART NO. / DRAWING NO. 0811-2X8R-19	STANDARD DIM.		[] METRIC DIM. AS REFERENCE		REV. : E	bel
				TOL. IN INCH		UNIT : INCH [mm]			
CHKD TAD/KEUNG	DATE 12-12-04		FILE NAME 08112X8R19E.DWG	.X		SCALE : N/A	SIZE : A4		COMPONENTS CONSTRUCTED PLANET
				.XX			PAGE : 3		

FORM NO. - ENG02082001

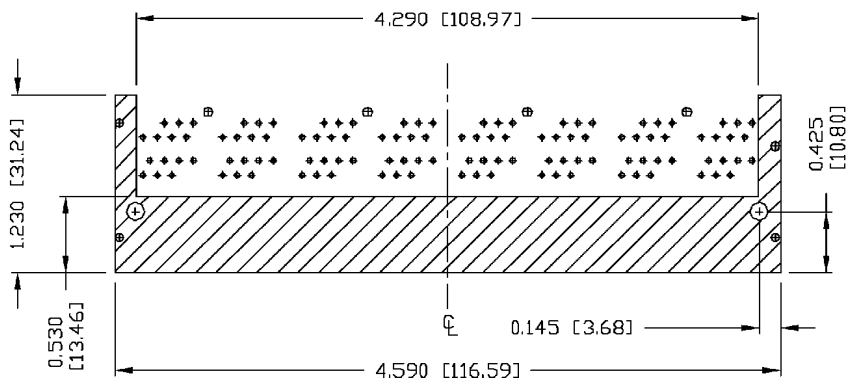
THE INFORMATION CONTAINED HEREIN IS CONSIDERED PROPRIETARY TO BEL FUSE INC. AND SHALL NOT BE COPIED, REPRODUCED OR DISCLOSED WITHOUT THE WRITTEN APPROVAL OF BEL FUSE INC.

PORT ASSIGNMENT
 (COMPONENT SIDE VIEW)



PIN-OUT INFORMATION
 (COMPONENT SIDE VIEW)

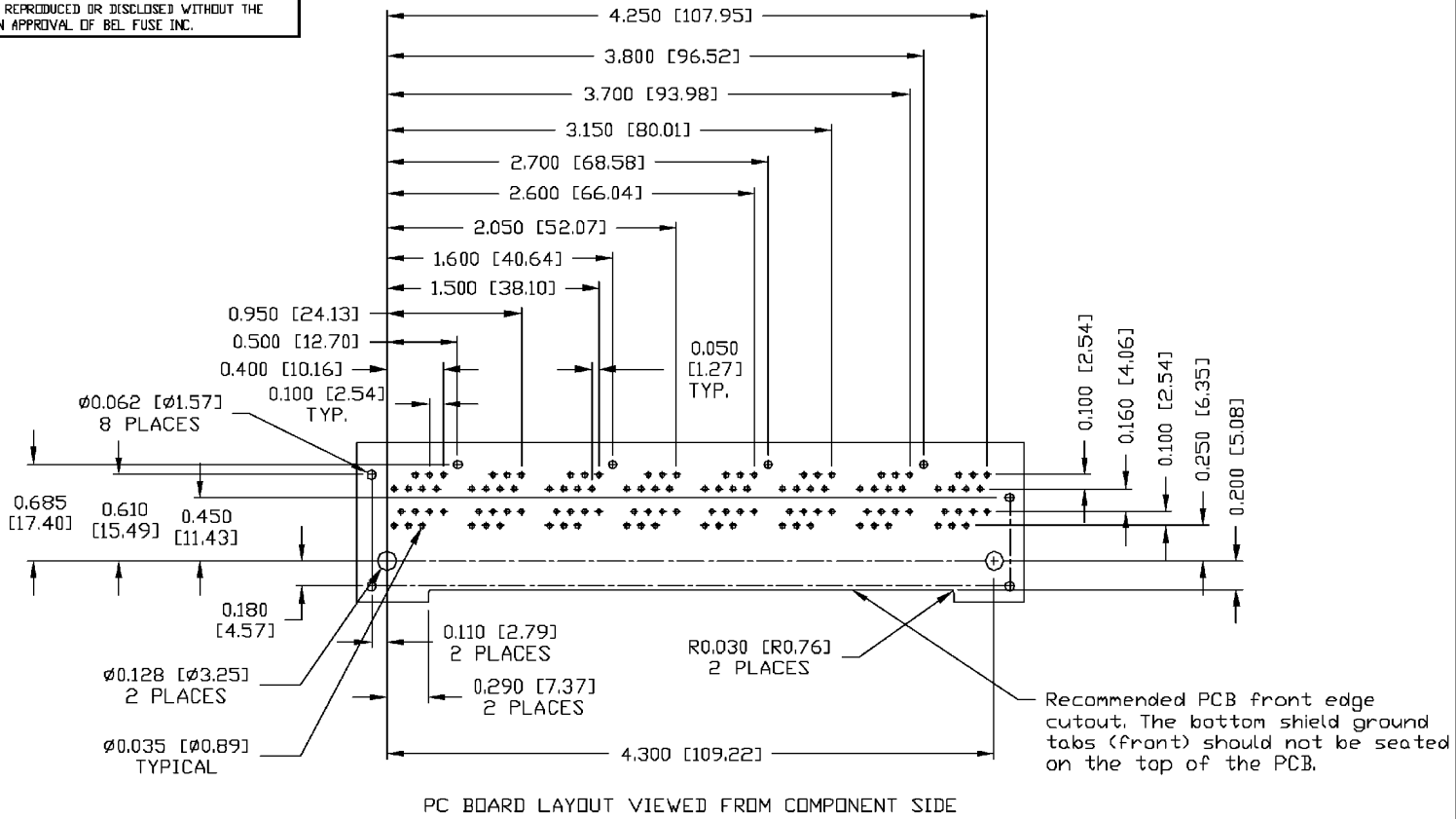
8	GND
7	NO PIN
6	RD-
5	RCT
4	RD+
3	TD-
2	TCT
1	TD+



THE SHADED AREA OF BOTTOM SIDE OF PART

DRWN LING	DATE 12-12-04	TITLE 2XB MagJack™ (4 cores)	PART NO. / DRAWING NO. 0811-2X8R-19	STANDARD DIM.		[] METRIC DIM. AS REFERENCE		 COMPONENTS CONSTRUCTED PLANET
				TOL. IN INCH		UNIT : INCH [mm]	REV. : E	
CHKD TAD/KEUNG	DATE 12-12-04		FILE NAME 08112X8R19E.DWG	.X		SCALE : N/A	SIZE : A4	
FORM NO. - ENG02082001				.XX				
				.XXX	±0.010			PAGE : 4

THE INFORMATION CONTAINED HEREIN IS CONSIDERED PROPRIETARY TO BEL FUSE INC. AND SHALL NOT BE COPIED, REPRODUCED OR DISCLOSED WITHOUT THE WRITTEN APPROVAL OF BEL FUSE INC.



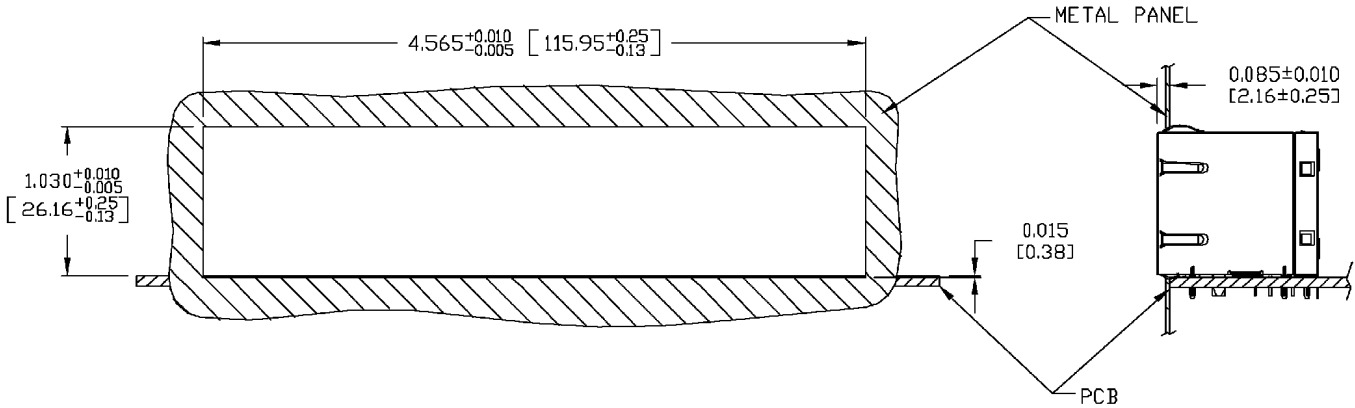
DRWN LING	DATE 12-12-04	TITLE 2X8 MagJack™ (4 cores)	PART NO. / DRAWING NO. 0811-2X8R-19	STANDARD DIM. TOL. IN INCH .X .XX .XXX ±0.010	[] METRIC DIM. AS REFERENCE UNIT : INCH [mm] SCALE : N/A	REV. : E SIZE : A4 PAGE : 5	COMPONENTS TO CONSTRUCT PLANET
CHKD TAO/KEUNG	DATE 12-12-04		FILE NAME 08112X8R19E.DWG				

FORM NO. - ENG02082001

This document is electronically generated. This is a controlled copy if used internally

THE INFORMATION CONTAINED HEREIN IS CONSIDERED PROPRIETARY TO BEL FUSE INC. AND SHALL NOT BE COPIED, REPRODUCED OR DISCLOSED WITHOUT THE WRITTEN APPROVAL OF BEL FUSE INC.

SUGGESTED PANEL OPENING



NOTE:
 THE DISTANCE OF PANEL INSIDE SURFACE RELATIVE TO FRONT SURFACE OF PART IS ONLY A SUGGESTION. IN CASE THIS DISTANCE IS DIFFERENT, THE REQUIRED PANEL OPENING DIMENSIONS CHANGE ACCORDINGLY.

PACKING INFORMATION

PACKING TRAY : 0200-9999-B2 (TOP)
 0200-9999-B1 (BOTTOM)
 PACKING QUANTITY : 10 PCS FINISHED GOODS PER TRAY
 7 TRAYS (70 PCS FINISHED GOODS) PER CARTON BOX

NOTE : CARDBOARDS ARE PLACED BETWEEN LAYERS OF PACKING TRAY INSIDE CARTON BOX (INCLUDE THE UPPERMOST AND LOWERMOST TRAY)

DRWN	DATE	TITLE	PART NO. / DRAWING NO.	STANDARD DIM.	[] METRIC DIM. AS REFERENCE	 COMPONENTS TO CONSTRUCT PLANET
LING	12-12-04	2X8 MagJack™ (4 cores)	0811-2X8R-19	TOL. IN INCH	UNIT : INCH [mm]	
CHKD	DATE		FILE NAME	.X	SCALE : N/A	
TAO/KEUNG	12-12-04		08112X8R19E.DWG	.XX	SIZE : A4	
FORM NO. - ENG02082001				.XXX	±0.004	PAGE : 6