

Excellent Integrated System Limited

Stocking Distributor

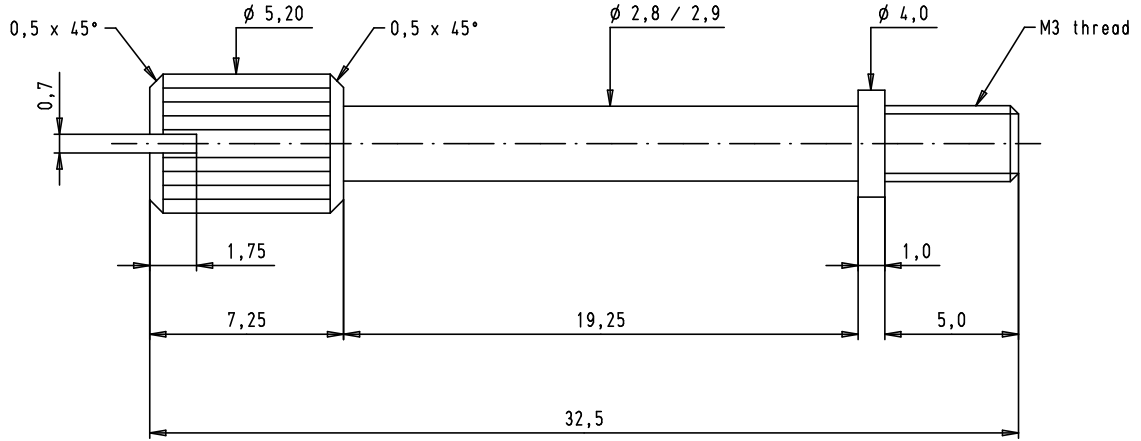
Click to view price, real time Inventory, Delivery & Lifecycle Information:

[Harting](#)



[09670019997](#)

For any questions, you can email us directly:

sales@integrated-circuit.com



Screw to be used for full metal hood with part number 09 67 0XX 0336

				Det.	Name	 All Dim. in mm Orig. Size DIN A 4	Knurled screw M3 for metal hood	Maßstab/ Scale 5:1
			Detail.	13/11/09	PK			
			Insp.					
			Stand.					
	EC00999	13/11/09	PK	HARTING EURL F-95972 Paris			TB 09 67 001 9997	Blatt/ Page 1 / 1
	Mod.	Det.	Name					