

Excellent Integrated System Limited

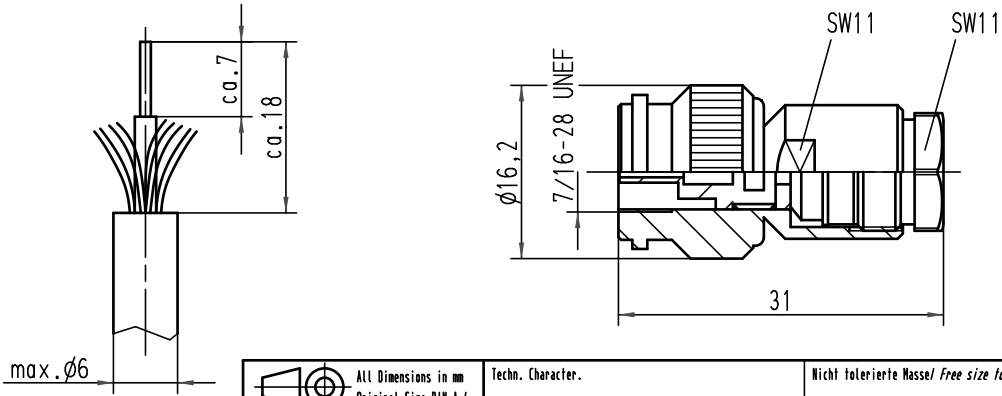
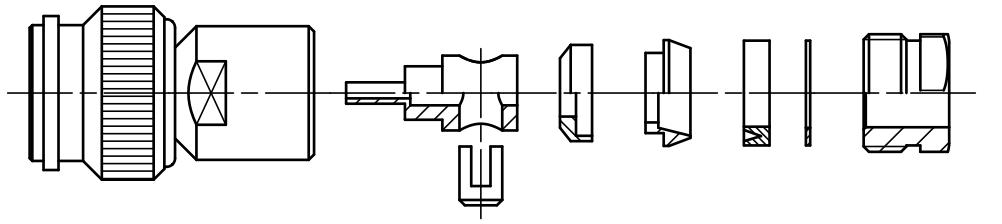
Stocking Distributor



Click to view price, real time Inventory, Delivery & Lifecycle Information:

[Harting](#)
[20100016211](#)

For any questions, you can email us directly:
sales@integrated-circuit.com

Alle Rechte vorbehalten/ All rights reserved



 All Dimensions in mm Original Size DIN A 4			Techn. Character.			Nicht tolerierte Masse/ Free size tolerances		
						Maßstab/Scale 2:1	F-TNC-Kabelstecker für LWL-Kabel $\phi 5,5-6\text{mm}$, 1mm POF	
			Detail.	28.10.03	Ste			
			Insp.		WIT			
			Stand.					
413686	11.03.08	Pr	HARTING Electric GmbH & Co. KG				TB 20 10 001 6211	Blatt/ page
410742			D-32339 Espelkamp					
Mod.	Dat.	Name						