

Excellent Integrated System Limited

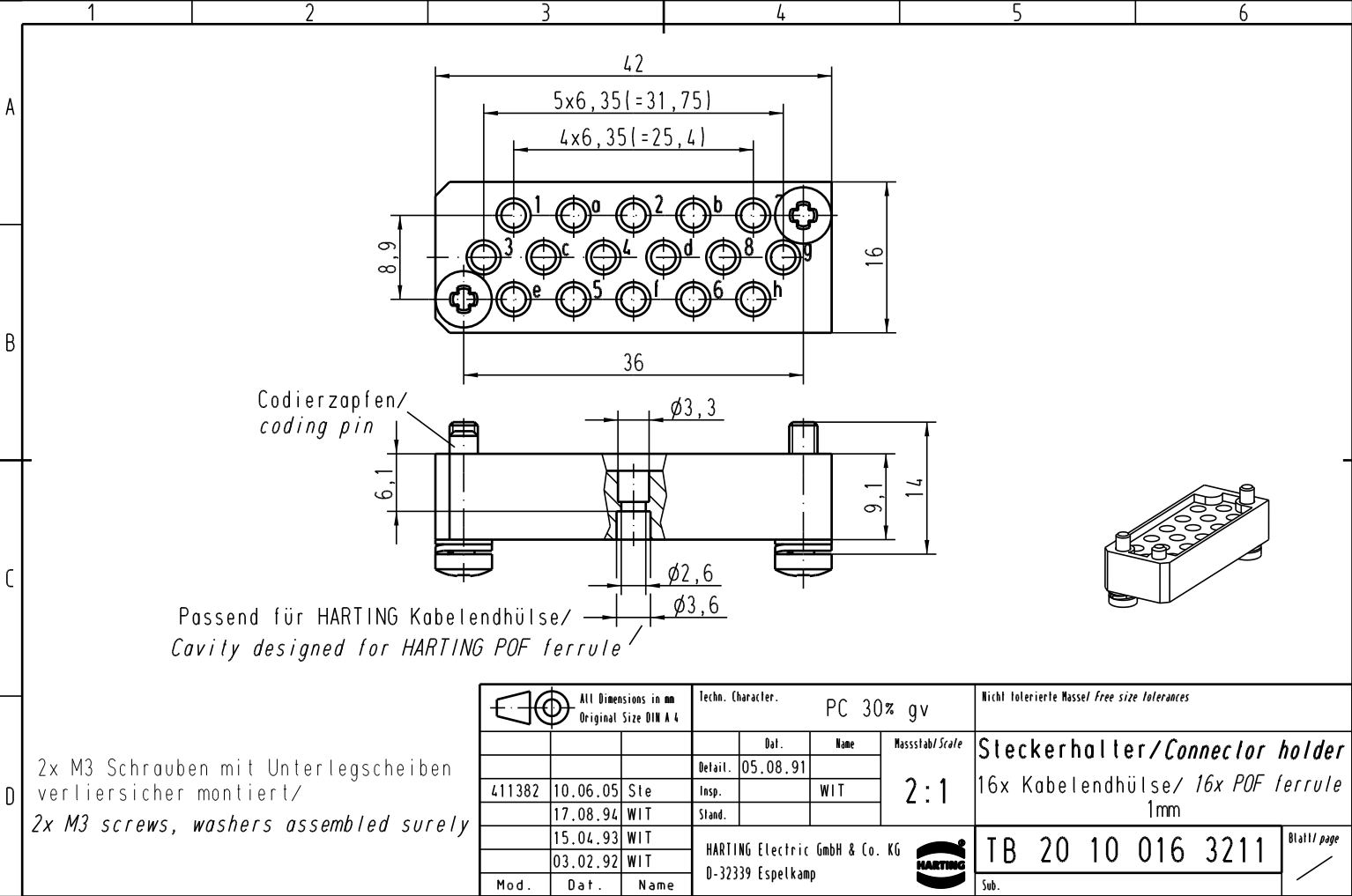
Stocking Distributor

Click to view price, real time Inventory, Delivery & Lifecycle Information:

[Harting](#)
[20100163211](#)



For any questions, you can email us directly:
sales@integrated-circuit.com

Alle Rechte vorbehalten/ All rights reserved



Passend für HARTING Kabelendhülse/
Cavity designed for HARTING POF ferrule

2x M3 Schrauben mit Unterlegscheiben
verliersicher montiert/
2x M3 screws, washers assembled surely

 All Dimensions in mm Original Size DIN A 4			Techn. Character. PC 30% gv			Nicht tolerierte Masse/ free size tolerances		
			Dat. Name		Massstab/Scale		Steckerhalter/Connector holder	
411382 10.06.05 Ste			Detail. 05.08.91		2:1		16x Kabelendhülse/ 16x POF ferrule 1mm	
17.08.94 WIT			Insp. WIT					
15.04.93 WIT			Stand.					
03.02.92 WIT			HARTING Electric GmbH & Co. KG D-32339 Espelkamp				TB 20 10 016 3211	
Mod. Dat. Name					Sub.		Blatt/ page	