

Excellent Integrated System Limited

Stocking Distributor

Click to view price, real time Inventory, Delivery & Lifecycle Information:

[Harting](#)
[33562120050028](#)

For any questions, you can email us directly:
sales@integrated-circuit.com

D-Sub

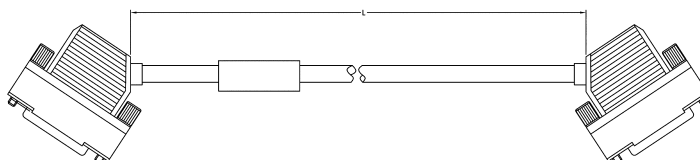


Identification	Part No.	Drawing	Dimensions in mm
----------------	----------	---------	------------------

Cable assembly D-Sub HD 78 pole, male

Hood: shielded plastic hood with side entry, screw 4-40 UNC
 Cable: 39 twisted pairs, AWG 26, double shielded, PVC
 Wiring: 1:1

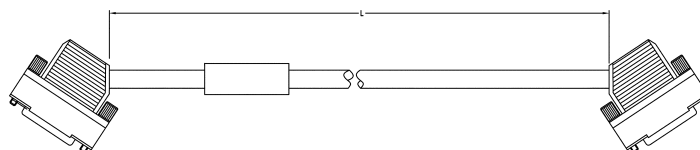
Length: L = 0.5 m	33 56 212 0050 028
L = 1.0 m	33 56 213 1000 002
L = 2.0 m	33 56 213 2000 016
L = 5.0 m	33 56 212 0500 029
L = 10.0 m	33 56 212 1000 030
L = 20.0 m	33 56 212 2000 031



Cable assembly D-Sub HD 44 pole, male

Hood: shielded plastic hood with side entry, screw 4-40 UNC
 Cable: 22 twisted pairs, AWG 26, double shielded, PVC
 Wiring: 1:1

Length: L = 0.5 m	33 56 213 0500 023
L = 1.0 m	33 56 213 1000 024
L = 1.5 m	33 56 213 1500 022
L = 2.0 m	33 56 213 2000 025
L = 5.0 m	33 56 213 5000 026
L = 10.0 m	33 56 212 1000 027



Cable assembly D-Sub HD 44 pole, male

Hood: metal hood with top entry, screw 4-40 UNC
 Cable: 24 twisted pairs, AWG 26, double shielded, PVC
 Wiring: 1:1

Length: L = 0.5 m	33 56 212 0050 032
L = 1.0 m	33 56 212 0100 033
L = 5.0 m	33 56 212 0500 034
L = 10.0 m	33 56 212 1000 035
L = 20.0 m	33 56 212 2000 036

