

Excellent Integrated System Limited

Stocking Distributor

Click to view price, real time Inventory, Delivery & Lifecycle Information:

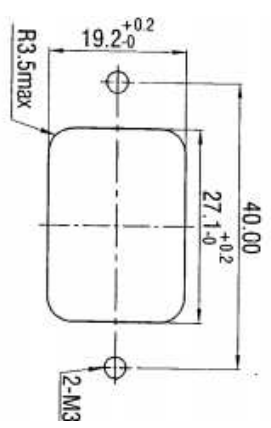
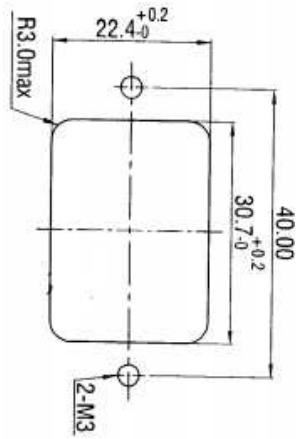
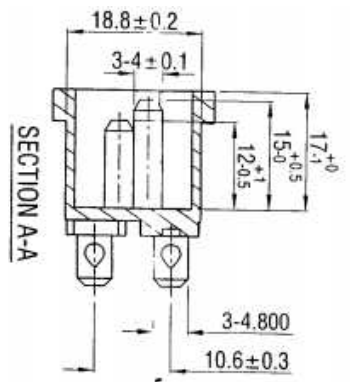
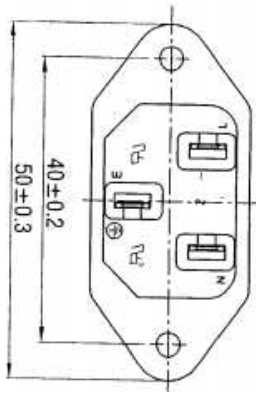
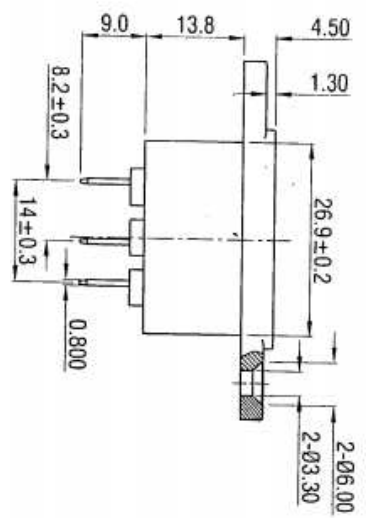
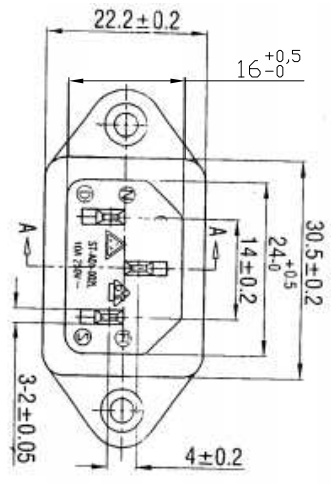
[ASSMANN WSW Components](#)

[A-KGS-F/T1N](#)

For any questions, you can email us directly:

sales@integrated-circuit.com

A	B	C	D	E	F	G	H
---	---	---	---	---	---	---	---



FOR REAR MOUNTING USE
PANEL CUT-OUT

- NOTES:**
- A. Material:
 1. Housing: PBT WITH GF30% UL 94V-0 Color : Black
 2. Terminal: COPPER ALLOY, TIN PLATED
 - B. Electrical Characteristics:
 1. Rating: 15A 250V~ (UL, CUL)
 - 10A 250V~ (CCC, VDE, SEMKO, NEMKO, FIMKO, DEMKO, SAA, KC)
 2. Electric Strength: AC 2,000 V FOR ONE MINUTE
 3. Insulation Resistance: 100MΩ MIN. AT 500V DC
 - C. Approvals:
 - UL, CUL, CCC, VDE, SEMKO, NEMKO, FIMKO, DEMKO, SAA, KC

RoHS compliant

Scale	1:1
TOLERANCE	
X.X	±0.3
X.XX	±0.2
X.XXX	±0.1
DIM	TOL
Ang.	±3°
UNIT	mm

Id.	Modification	Date	Name
①	Drawn	14.12.2007	N.Schulz
②	Update	08.07.2009	Dean
③	Change of plant	18.12.2012	Winnie



1	2	3	4	5	6	7
Customer-No.		Date		Name		ASSMANN WSW-No.
Drawing-No.		Date		Name		A-KGS-F/T1N
ASS 0889 CO		14.12.2007		N.Schulz		rev03
Replace		18.12.2012		Winnie		SHEET