

Excellent Integrated System Limited

Stocking Distributor

Click to view price, real time Inventory, Delivery & Lifecycle Information:

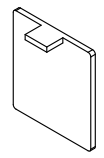
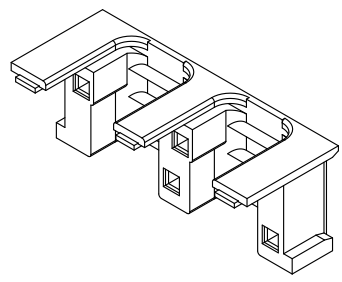
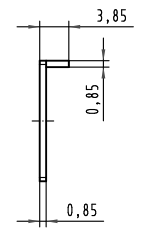
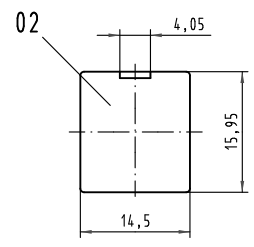
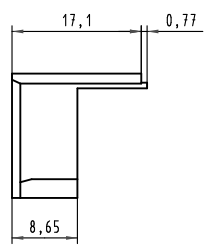
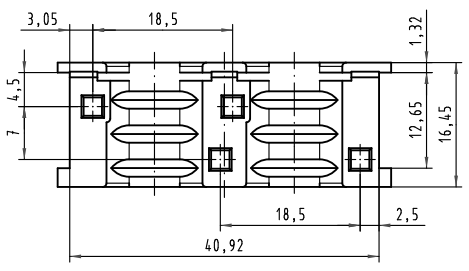
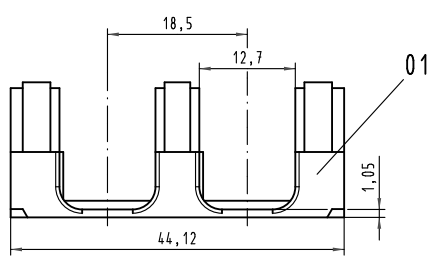
[Harting](#)
[09060009915](#)

For any questions, you can email us directly:
sales@integrated-circuit.com

Alle Rechte vorbehalten. All rights reserved

| Pos. pos. | Anzahl number | Benennung description |
|-----------|---------------|--|
| 01 | 1 | Rundkabeleinsatz round cable insert |
| 02 | 1 | Blindstopfen blinding piece |

Teile nicht montiert
parts not assembled



| | | | | | |
|---|----------|--|--|--|--------------------|
| All Dimensions in mm Original Size DIN A 3 | | Techn. Character. | | Nicht tolerierte Maß/Free size tolerances | |
| | | Bel. Name Detail: 23.03.06 Hage. Insp. 23.03.06 Sch. Stand. | Maßstab/Scale 2:1 | Rundkabeleinsatz 2x Ø12,5 für Schalengehäuse B round cable insert 2xØ12,5 for shell housing B | |
| 34737 | 19.10.07 | Hage. | HARTING Electronics GmbH & Co. KG D-32339 ESPELKAMP | | TB 09 06 000 9915 |
| 33524 | | | | | |
| Mod. | Dat. | Name | | | Blatt/page Sub. |