

## Excellent Integrated System Limited

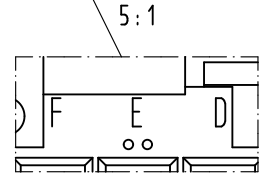
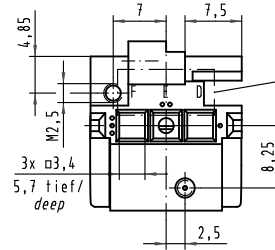
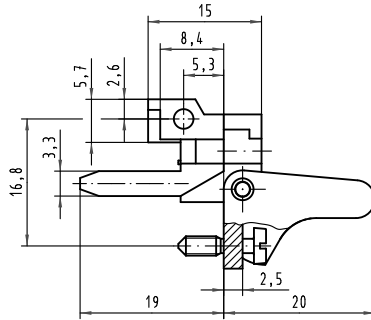
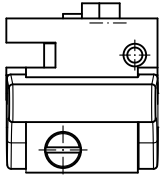
Stocking Distributor

Click to view price, real time Inventory, Delivery & Lifecycle Information:

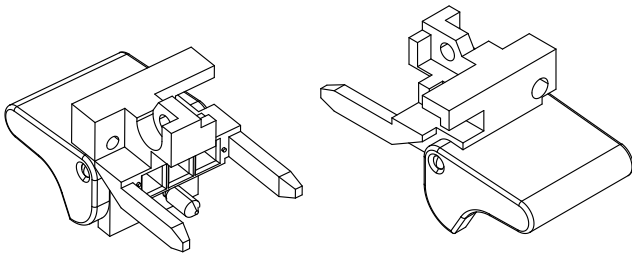
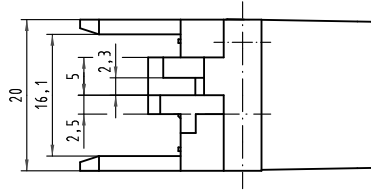
[Harting](#)  
[09068009943](#)

For any questions, you can email us directly:  
[sales@integrated-circuit.com](mailto:sales@integrated-circuit.com)

Alle Rechte vorbehalten. All rights reserved



**Kennzeichnung beachten!**  
*consider marking!*



Rastelement aus Zink- Druckguss vernickelt, Hebel aus glasfaserverstärktem Kunststoff  
*fixing bracket of nickel plated zinc die casting, lever of fibre reinforced plastic*

	All Dimensions in mm Original Size DIN A 3		Techn. Character.		Nicht tolerierte Maß/Free size tolerances ISO 2768 mK	
			Bel.	Name	Maßstab/Scale	
			Detail:	13.07.09 LeHT	2:1	
			Insp.	13.07.09 TD	5:1	
			Stand.			
35549	22.07.09	LeHT	HARTING Electronics GmbH & Co. KG			<b>TB 09 06 800 9943</b>
35537			D-32339 ESPELKAMP			
Mod.	Dat.	Name				Blatt/ page