

## **Excellent Integrated System Limited**

Stocking Distributor

Click to view price, real time Inventory, Delivery & Lifecycle Information:

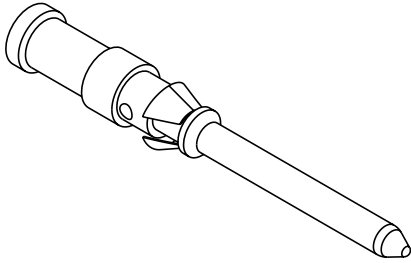
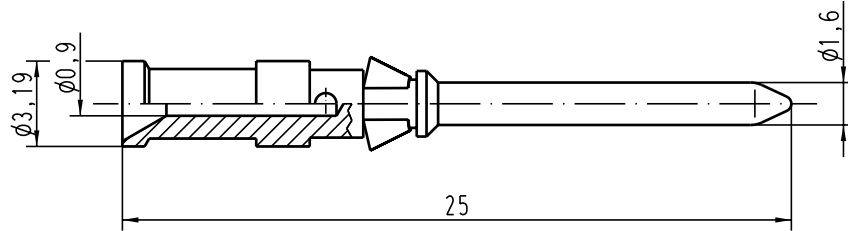
[Harting](#)

[09150006304](#)

For any questions, you can email us directly:



[sales@integrated-circuit.com](mailto:sales@integrated-circuit.com)

Alle Rechte vorbehalten/ All rights reserved



Leiterquerschnitt/wire gauge: 0,14-0,37mm<sup>2</sup> / AWG 26-22

Oberfläche/surface: Gold Tec (NiP+Au)

|  |         |          |                                |      |   |   |  |
|--|---------|----------|--------------------------------|------|---|---|--|
|  All Dimensions in mm<br>Original Size DIN A 4 |         |          | Techn. Character.              |      |   | Nicht tolerierte Masse free size tolerances |  |
|  |         |          |                                | Dat. | Name  | Maststab/Scale<br><b>5:1</b>                | <b>Kontaktstift-c</b><br>crimp contact |
|  | Detail. | 14.05.04 | Loe.                           |      |   |   |  |
|  | Insp.   |          | KR                             |      |   |   |  |
|  | Stand.  |          |                                |      |   |   |  |
| 411022   |         |          | HARTING Electric GmbH & Co. KG |      |  | <b>TB 09 15 000 6304</b>                    | Blatt/ page                            |
| Mod.   | Dat.    | Name     | D-32339 Espelkamp              |      |   |   |  |