

Excellent Integrated System Limited

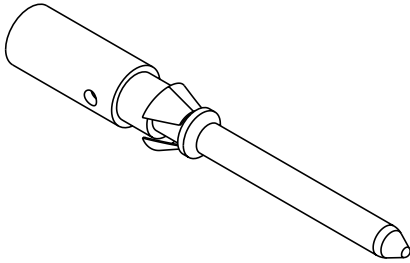
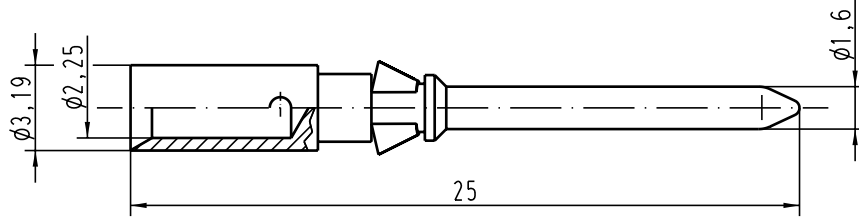
Stocking Distributor

Click to view price, real time Inventory, Delivery & Lifecycle Information:



[Harting](#)
[09150006306](#)

For any questions, you can email us directly:
sales@integrated-circuit.com

Alle Rechte vorbehalten/ All rights reserved



Leiterquerschnitt/wire gauge: 2,5mm² / AWG 14
 Oberfläche/surface: Gold Tec (NiP+Au)

 All Dimensions in mm Original Size DIN A 4			Techn. Character.			Nicht tolerierte Masse free size tolerances	
				Dat.	Name	Maststab/Scale 5:1	Kontaktstift-c <i>crimp contact</i>
	Detail.	14.05.04	Loe.				
	Insp.		KR				
	Stand.						
411022			HARTING Electric GmbH & Co. KG		 TB 09 15 000 6306	Blatt/ page	
Mod.	Dat.	Name	D-32339 Espelkamp				Sub.