

## Excellent Integrated System Limited

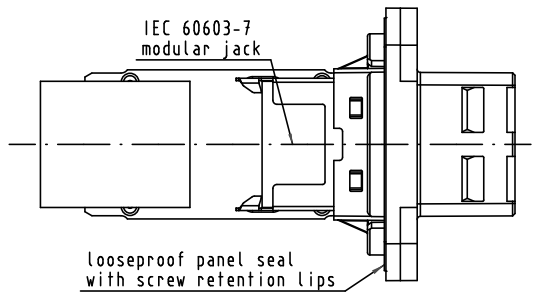
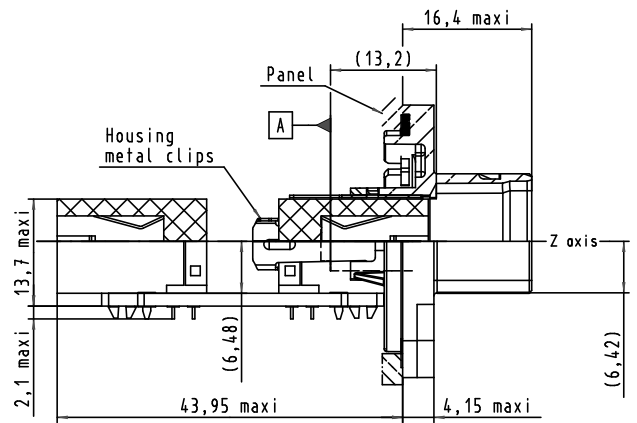
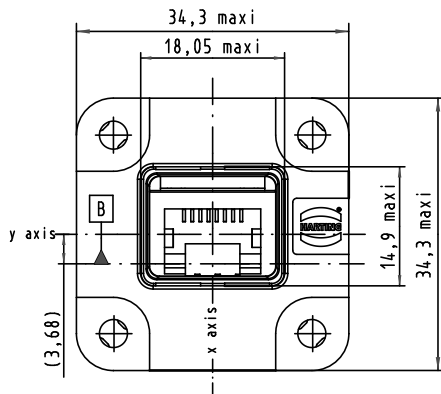
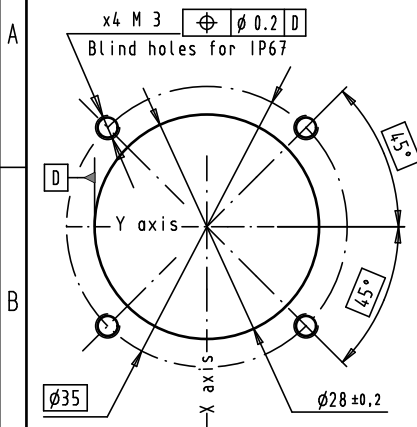
Stocking Distributor

Click to view price, real time Inventory, Delivery & Lifecycle Information:

[Harting](#)  
[09452951130](#)

For any questions, you can email us directly:  
[sales@integrated-circuit.com](mailto:sales@integrated-circuit.com)

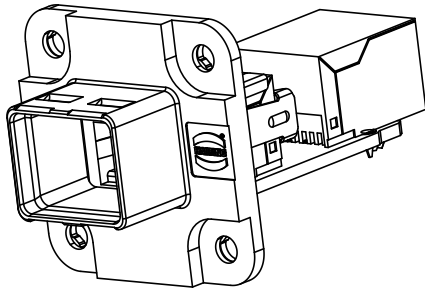
Panel cutting





Connector pitches on panel = 35 mm  
Receptacle mating face acc. to IEC 61076-3-106 - variant 04

jack references A and B according to IEC 60603-7 the jack is located in the housing in the X,Y,Z axis after locking clips. The assembled PC Board is delivered to customers not assembled with the housing.

Screwing by x4 M3 screws with flat washer  
Recommended screwing torque for IP67=0.5 N.m mini



			Det.	Name	 All Dim. in mm Orig. Size DIN A 3	HARTING PushPull Metal RJ45 EasyInstall panel feed-through IP65/67 right angled jacks, 8 poles	Maßstab/ Scale 1,5:1
		Detail.	12/02/09	BD			
		Insp.	28/02/12	JHV			
36318	17/01/12	BD	Stand.				
36070	08/03/10	BD					
35643	12/02/09	BD					
Mod.	Det.	Name	HARTING EURL F-95972 Paris			TB 09 45 295 1130 Sub.	Blatt/ Page 1 / 1