



Distributor of Harting: Excellent Integrated System Limited

Datasheet of 09553566611741 - D-Sub Connector Receptacle, Female Sockets 25 Position
Surface Mount Solder

Contact us: sales@integrated-circuit.com Website: www.integrated-circuit.com

Excellent Integrated System Limited

Stocking Distributor

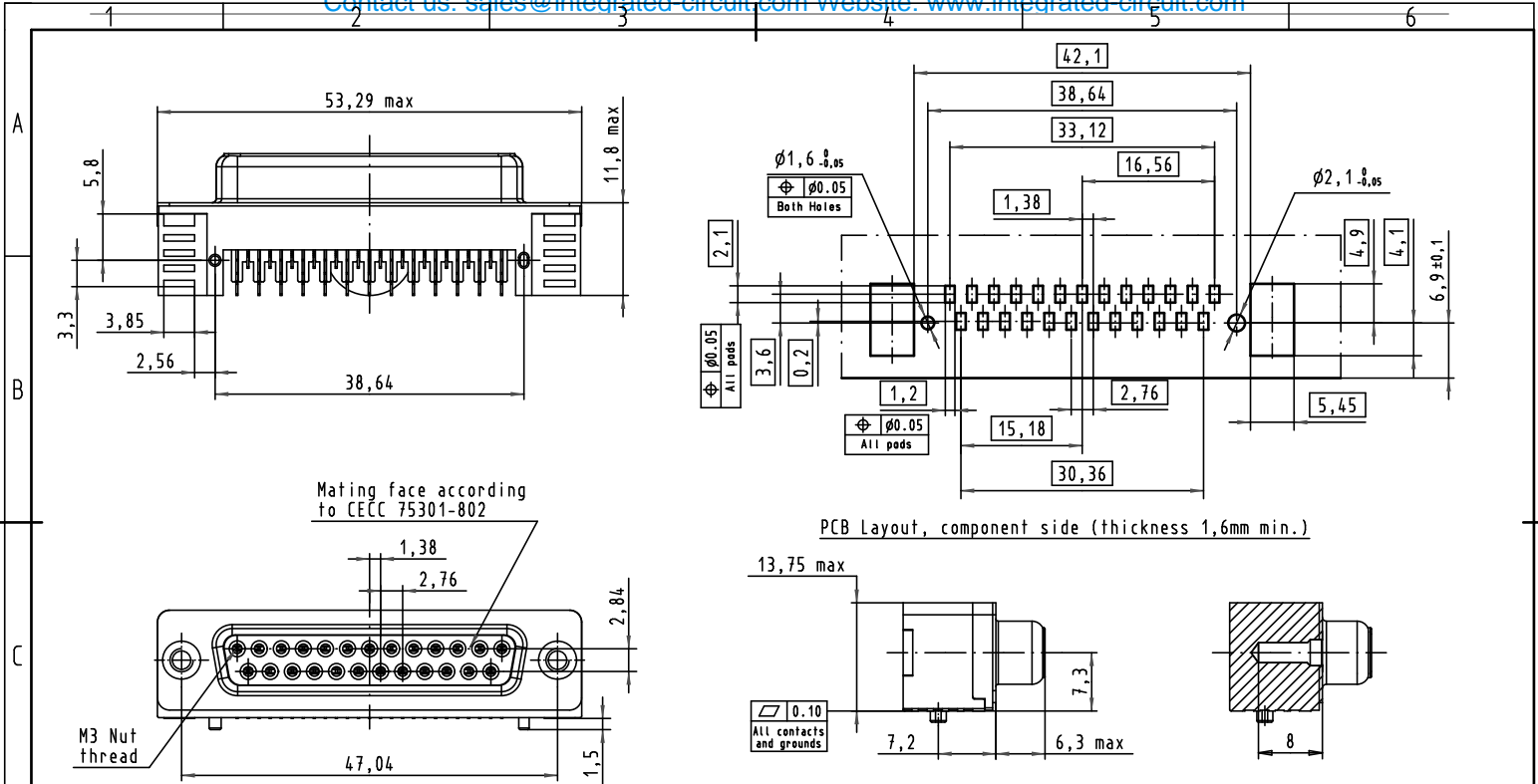
Click to view price, real time Inventory, Delivery & Lifecycle Information:

[Harting](#)

[09553566611741](#)

For any questions, you can email us directly:

sales@integrated-circuit.com

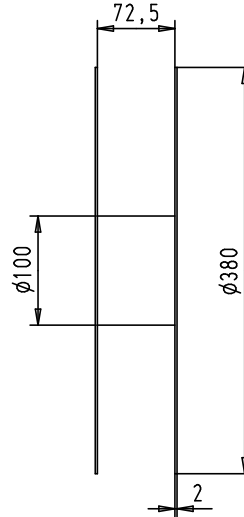
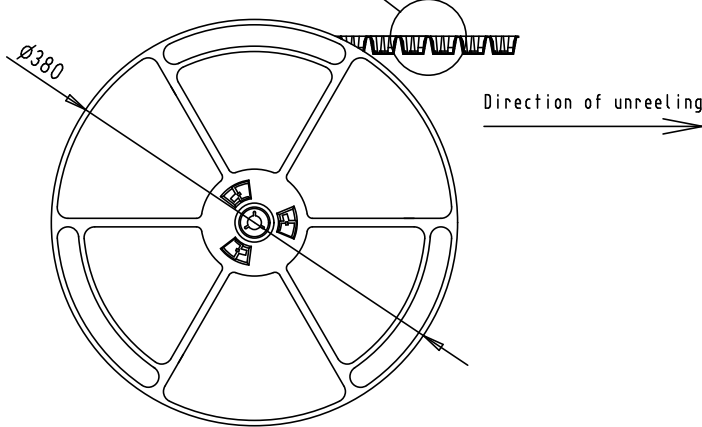
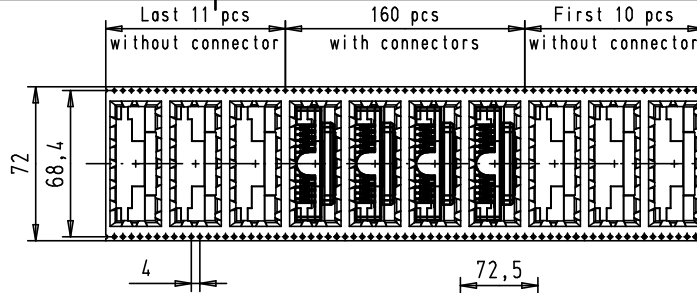
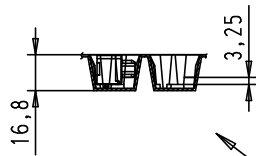


Mating face according to CECC 75301-802

PCB Layout, component side (thickness 1,6mm min.)

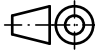

Max. Temperature: 260°C during 10 seconds

09553563612.741	1	4-40 UNC	Black Insulator	Reel Packaging (140 connectors) see page 2/2				Det.	Name	 All Dim. in mm Orig. Size DIN A 4	D-SUB SMT Standard Female 25p with die casted grounds and nuts	Maßstab/ Scale 1,5:1		
09553566612.741	2							Detail.	30Jun2010				ED	
09553567612.741	3							Insp.						
09553563611.741	1	M3	Black Insulator	Reel Packaging (140 connectors) see page 2/2				Stand.			TB 09 55 356 x61x	Blatt/ Page 1 / 2		
09553566611.741	2							EC02316	30Aug2010				ED	HARTING EURL F-95972 Paris
09553567611.741	3							EC01953	30Jun2010				ED	
Part number	PL	Thread	Index designation		Mod.	Del.	Name				Sub.			



See TB 09 55 356 x61x folio 1/2 for connector dimensions and PCB layout

Packaging in accordance with EIA 481-2-A

09553563612.741	1	4-40 UNC	Black Insulator	Reel Packaging (140 connectors)				Det.	Name	 All Dim. in mm Orig. Size DIN A 4	D-SUB SMT Standard Female 25p with die casted grounds and nuts	Maßstab/ Scale	
09553566612.741	2							Detail.	30Jun2010				ED
09553567612.741	3							Insp.					
09553563611.741	1	M3	Black Insulator	Reel Packaging (140 connectors)				Stand.			TB 09 55 356 x61x	Blatt/ Page 2 / 2	
09553566611.741	2				EC02316	30Aug2010	ED	HARTING EURL F-95972 Paris					
09553567611.741	3				EC01953	30Jun2010	ED						
Part number	PL	Thread	Index designation	Mod.	Del.	Name			Sub.				