

## Excellent Integrated System Limited

Stocking Distributor

Click to view price, real time Inventory, Delivery & Lifecycle Information:

[Molex Connector Corporation](#)  
[5040520098](#)

For any questions, you can email us directly:

[sales@integrated-circuit.com](mailto:sales@integrated-circuit.com)

10 9 8 7 6 5 4 3 2 1

F

E

D

C

B

A

F

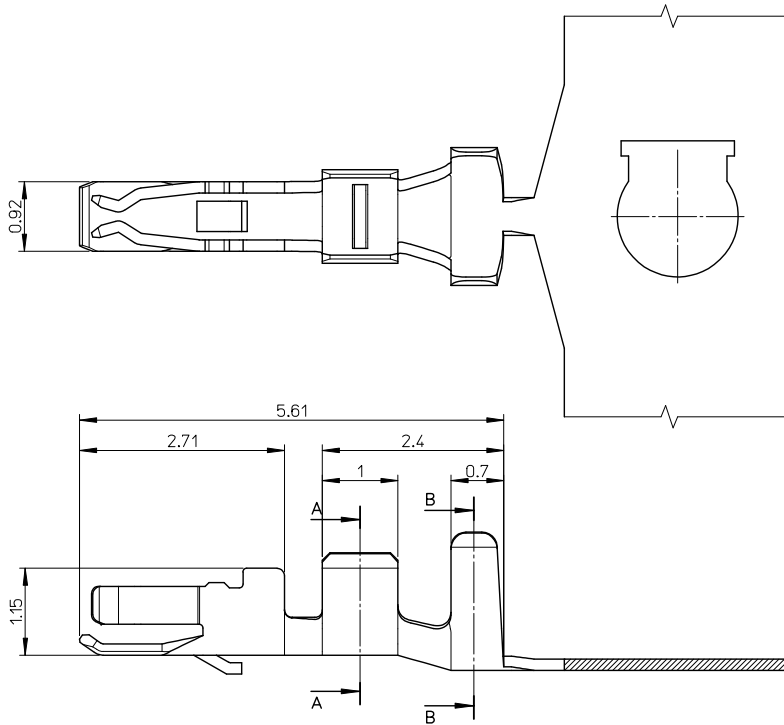
E

D

C

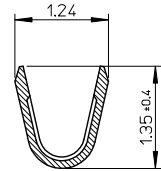
B

A

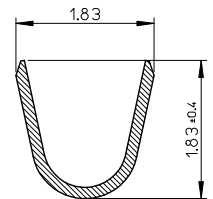


NOTES.

- 適合ハウジング: 504051\*\*\*\*  
APPLICABLE HOUSING: 504051\*\*\*\*
- 材質: 銅合金  
MATERIAL: COPPER ALLOY
- メッキ仕様: 金メッキ、ニッケル下地  
PLATING: GOLD PLATING  
NICKEL UNDER PLATING
- 圧着後、CS-504052-001の内容を満たす事  
FULFILL THE CONTENTS OF  
CS-504052-001 AFTER CRIMP



SECTION A-A



SECTION B-B

φ0.8 - 1.1mm	AWG #24 - 28	5040520098	CHAIN
INS. RANGE	WIRE RANGE	ORDER No.	FORM

RELEASED EC NO. J2014-1702 DRAWN: WAKE 2014/05/21 CHKD: KASAKAWA 2014/05/21 APPR: NUKITA 2014/05/22 REV: A	GENERAL TOLERANCES (UNLESS SPECIFIED)		DIMENSION STYLE	SCALE	DESIGN UNITS	THIRD ANGLE PROJECTION	
	10 UNDER	± 0.2	MM ONLY	20:1	METRIC	1.5 WIRE TO BOARD CONN. REC CRIMP TERMINAL (AWG #24 - 28) <b>molex</b>	
	10 OVER 30 UNDER	± 0.25	DRAWN BY	DATE	TITLE		
	30 OVER	± 0.3	THANYU	2012/03/29	1.5 WIRE TO BOARD CONN. REC CRIMP TERMINAL (AWG #24 - 28)		
	ANGULAR ± 3 °	DRAFT WHERE APPLICABLE MUST REMAIN WITHIN DIMENSIONS	CHECKED BY	DATE	APPROVED BY	DATE	
			KASAKAWA	2012/03/29	YOITO	2012/09/04	
			MATERIAL NO.		DOCUMENT NO.	SHEET NO.	
			SEE CHART		SD-504052-001	1 OF 1	
			THIS DRAWING CONTAINS INFORMATION THAT IS PROPRIETARY TO MOLEX INCORPORATED AND SHOULD NOT BE USED WITHOUT WRITTEN PERMISSION				

9 8 7 6 5 4 3 2 1