

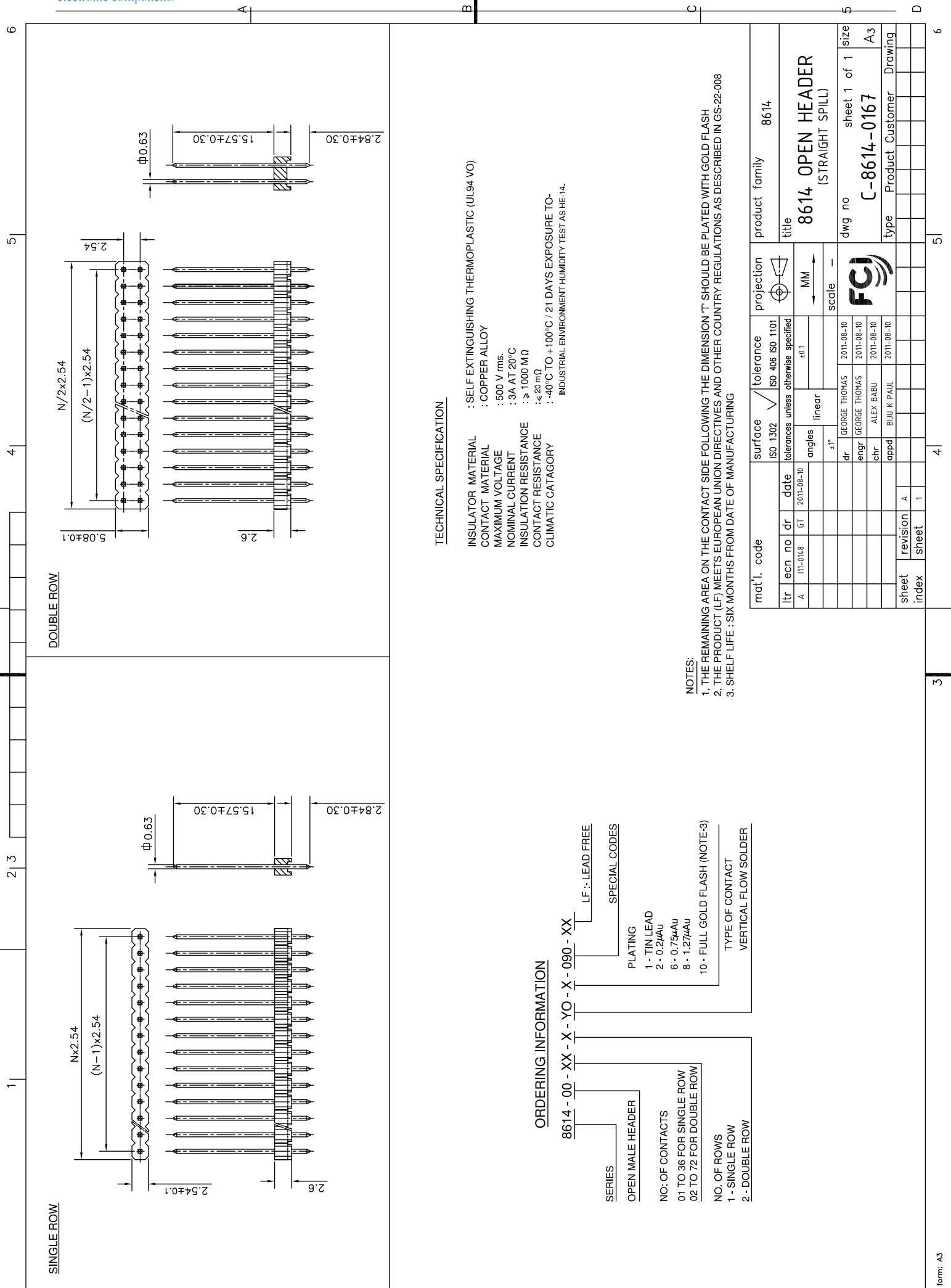
## Excellent Integrated System Limited

Stocking Distributor

Click to view price, real time Inventory, Delivery & Lifecycle Information:

[FCI](#)  
[861400121YO2090LF](#)

For any questions, you can email us directly:  
[sales@integrated-circuit.com](mailto:sales@integrated-circuit.com)



**TECHNICAL SPECIFICATION**

INSULATOR MATERIAL : SELF EXTINGUISHING THERMOPLASTIC (UL94 VO)  
 CONTACT MATERIAL : COPPER ALLOY  
 MAXIMUM VOLTAGE : 500 V rms.  
 NOMINAL CURRENT : 3A AT 20°C  
 INSULATION RESISTANCE :  $\geq 1000 \text{ M}\Omega$   
 CONTACT RESISTANCE :  $\leq 20 \text{ m}\Omega$   
 CLIMATIC CATAGORY : -40°C TO +100°C / 21 DAYS EXPOSURE TO INDUSTRIAL ENVIRONMENT HUMIDITY TEST AS HE-14.

**NOTES:**

1. THE REMAINING AREA ON THE CONTACT SIDE FOLLOWING THE DIMENSION 'T' SHOULD BE PLATED WITH GOLD FLASH
2. THE PRODUCT (LF) MEETS EUROPEAN UNION DIRECTIVES AND OTHER COUNTRY REGULATIONS AS DESCRIBED IN GS-22-008
3. SHELF LIFE : SIX MONTHS FROM DATE OF MANUFACTURING

**ORDERING INFORMATION**

8614 - 00 - XX - X - X - YO - X - X - 090 - XX

SERIES : OPEN MALE HEADER

NO. OF CONTACTS : 01 TO 36 FOR SINGLE ROW, 02 TO 72 FOR DOUBLE ROW

NO. OF ROWS : 1 - SINGLE ROW, 2 - DOUBLE ROW

PLATING : 1 - TIN LEAD, 2 - 0.2μAu, 6 - 0.75μAu, 8 - 1.27μAu

10 - FULL GOLD FLASH (NOTE-3)

LF : LEAD FREE

SPECIAL CODES

TYPE OF CONTACT : VERTICAL FLOW SOLDER

mat'l. code		surface		tolerance		projection		product family	
ISO 1302		ISO 406 ISO 1101		ISO 1101		MM		8614	
itr		ecn no		dr		date		title	
A		111-0148		GT		2011-08-10		8614 OPEN HEADER (STRAIGHT SPILL)	
		angles		linear		±0.1		dwg no	
		±1°		dr		GEORGE THOMAS		sheet 1 of 1 size	
		enrg		2011-08-10		GEORGE THOMAS		A3	
		chr		2011-08-10		ALEX BABU		C-8614-0167	
		appd		2011-08-10		BIJU K PAUL		Product Customer Drawing	
sheet index		revision		A					
sheet 1									