

Excellent Integrated System Limited

Stocking Distributor

Click to view price, real time Inventory, Delivery & Lifecycle Information:

[FCI](#)
[77318-121LF](#)

For any questions, you can email us directly:
sales@integrated-circuit.com

PRODUCT NUMBER

77318-YXXLF

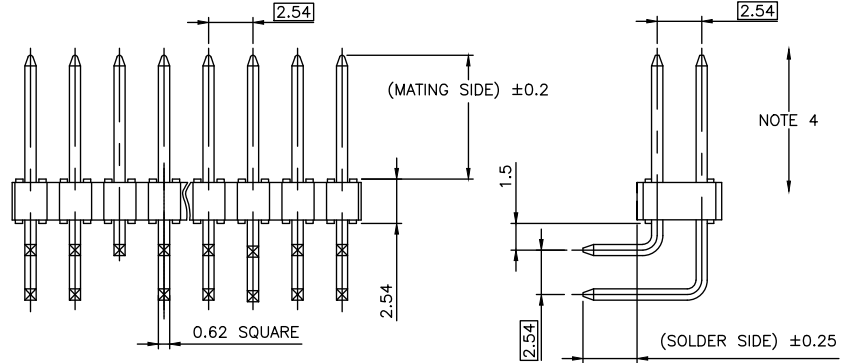
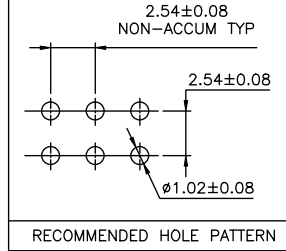
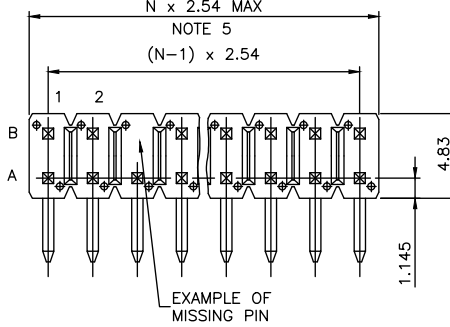
- RoHS COMPATIBLE SEE NOTE 7
- PIN STYLE SEE SHEET 2
- PLATING SEE SHEET 2

NOTES:

1. HOUSING MAT'L : HIGH TEMPERATURE THERMOPLASTIC. UL94V-0 COLOR: BLACK
2. PIN MATERIAL : PHOSPHOR BRONZE
3. PRODUCT PACKAGED IN POLY BAGS.
4. 9N MIN RETENTION IN EITHER DIRECTION
5. TO DETERMINE DIMENSIONS :
N = NUMBER OF POSITIONS PER ROW
EXAMPLE : 8 POS N x 2.54 = 20.32mm
6. UNDERPLATING : 1.27µm Ni MIN
7. RoHS COMPATIBLE PRODUCT SPECIFICATIONS
 - a - PLATING:
 - "LF" MEANS THE PRODUCT IS LEAD-FREE, 2µm MINIMUM MATTE TIN OVER 1.27µm MINIMUM NICKEL UNDERPLATE.
 - b - MANUFACTURING PROCESS COMPATIBILITY
 - THE HOUSING WILL WITHSTAND EXPOSURE TO 260°C ±5°C SOLDER BATH TEMPERATURE FOR 5 SECONDS IN A WAVE SOLDER APPLICATION WITH A 1.6mm MIN THICK CIRCUIT BOARD.
 - c - LABELING:
 - MEETS PACKAGING SPECS AS PER GS-14-920
 - d - LEGAL STATEMENT: SEE GS-47-0004

TOP VIEW

N x 2.54 MAX
NOTE 5
(N-1) x 2.54



mat'l. code		surface		tolerance		projection		product family	
ISO 1302		ISO 406 ISO 1101		tolerances unless otherwise specified		mm		BSTIK	
lfr	ecn no	dr	date	angles	linear	scale 1:4		title	
AK	F-23305	AMA	16.02.19		.X ±0.3			UNSH.HEADER	
					.XX ±0.15			RA DR TMT POL	
					.XXX ±0.05			dwg no	
AE	F11-0330	LMU	11.11.28					77318	
AF	F11-0343	LMU	12.02.17	dr	J COMPAGNON			sheet 1 of 4	
AG	F16303	JCO	13.11.15	engf				size	
AH	B-18917	LMU	14.09.29	chr				A3	
AJ	B-21083	LMU	15.06.05	appd	JMC			type	
								CUSTOMER Drawing	
sheet index	revision	AK	V	AD	C				
1	2	3	4						

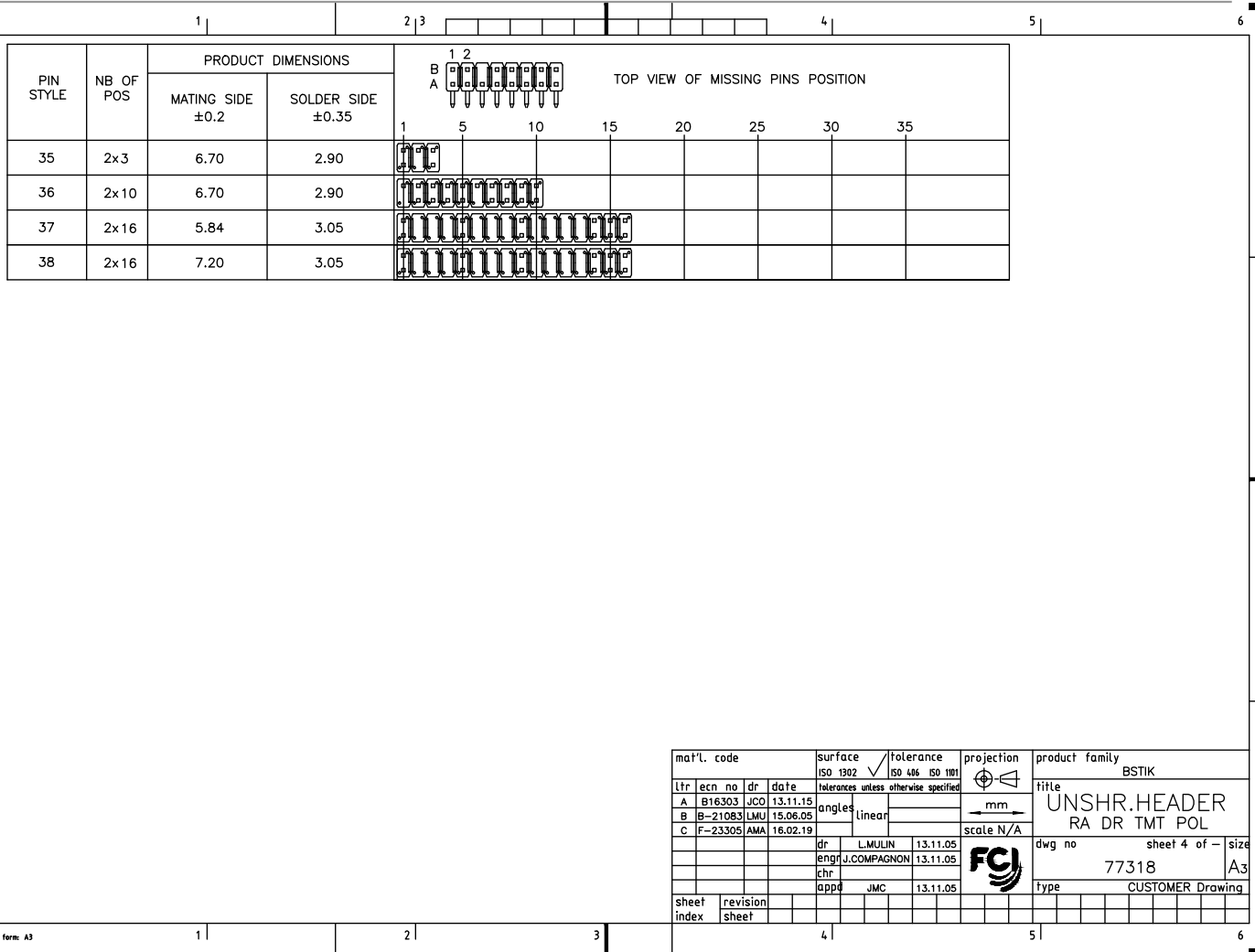
PIN STYLE	No OF POS	PRODUCT DIMENSIONS		TOP VIEW OF MISSING PINS POSITION										
		MATING SIDE ±0.2	SOLDER SIDE ±0.35	1	5	10	15	20	25	30	35			
01	2x16	5.84	2.41											
02	2x4	5.84	2.41											
03	2x13	5.84	2.41											
04	2x7	5.84	2.41											
05	2x3	5.84	2.41											
06	2x6	5.84	2.41											
07	2x14	5.84	2.41											
08	2x6	5.84	3.05											
09	2x3	5.84	3.05											
10	2x5	5.84	3.05											
11	2x7	5.84	2.41											

77318-GXXLF	0.76µm GXT FULL PLATED	
77318-8XXLF	0.38µm Au/GXT	2.0-7.5 Sn MATTE
77318-5XXLF	0.25µm Au/GXT	2.0-7.5 Sn MATTE
77318-4XXLF	2.0-7.5 Sn MATTE	
77318-2XXLF	1.27µm Au	2.0-7.5 Sn MATTE
77318-1XXLF	0.76µm Au/GXT	
PLATING CODE	CONTACT AREA	REMAINDER
	PLATING THICKNESS OVER 1.27µm Ni	

mat'l. code	surface	tolerance	projection	product family							
ISO 1302	ISO 406 ISO 1101	tolerances unless otherwise specified		BSTIK							
Ltr	ecn no	dr	date	title							
U	B-18916	LMU	14.09.29	UNSHR.HEADER							
V	F-23305	AMA	16.02.19	RA DR TMT POL							
P	F10502	GCO	01.08.23	dr	J	COMPAGNON	97.12.02	scale N/A	dwg no	sheet 2 of 4	size
R	F04-0362	LMU	04.11.30	engr					77318	A3	
S	F06-0207	LMU	06.05.27	chr							
T	F08-0148	RTR	08.03.31	app	JMC	97.12.02			type	CUSTOMER Drawing	
sheet index	revision	sheet									

PIN STYLE	NB OF POS	PRODUCT DIMENSIONS		TOP VIEW OF MISSING PINS POSITION											
		MATING SIDE ±0.2	SOLDER SIDE ±0.35	1 2 3 4 5 6 7 8 9 10 11 12 13 14 15 16 17 18 19 20 21 22 23 24 25 26 27 28 29 30 31 32 33 34											
17	2x4	5.84	2.41	[Diagram showing pin positions 1-4]											
18	2x4	8.08	2.93	[Diagram showing pin positions 1-4]											
19	2x15	8.08	2.93	[Diagram showing pin positions 1-15]											
20	2x32	8.08	2.93	[Diagram showing pin positions 1-32]											
21	2x6	5.84	3.05	[Diagram showing pin positions 1-6]											
22	2x2	5.84	2.41	[Diagram showing pin positions 1-2]											
23	2x20	5.84	3.05	[Diagram showing pin positions 1-20]											
24	2x23	6.8	3.05	[Diagram showing pin positions 1-23]											
25	2x15	6.8	3.05	[Diagram showing pin positions 1-15]											
26	2x5	7.67	10.5	[Diagram showing pin positions 1-5]											
27	2x5	5.84	3.05	[Diagram showing pin positions 1-5]											
28	2x5	5.84	3.05	[Diagram showing pin positions 1-5]											
29	2x5	5.84	3.05	[Diagram showing pin positions 1-5]											
30	2x5	3.90	2.80	[Diagram showing pin positions 1-5]											
31	2x24	6.80	3.05	[Diagram showing pin positions 1-24]											
32	2x12	5.84	3.05	[Diagram showing pin positions 1-12]											
33	2x24	8.08	3.05	[Diagram showing pin positions 1-24]											
34	2x30	8.08	3.05	[Diagram showing pin positions 1-30]											

mat'l. code	surface	tolerance	projection	product family
lfr ecn no dr date	ISO 1302	ISO 406 ISO 1101	mm	BSTIK
AC F11-0343 LMU 12.02.17	tolerances unless otherwise specified	angles linear	scale N/A	title
AD B16303 JCO 13.11.15				UNSHR.HEADER RA DR TMT POL
X F06-0207 LMU 06.07.27 dr J COMPAGNON 97.12.02				FCI
Y F10-0052 LMU 10.09.08 engf				dwg no 77318 sheet 3 of - size A3
AA F11-0314 LMU 11.10.28 chr				type CUSTOMER Drawing
AB F11-0330 LMU 11.11.28 app JMC 97.12.02				
sheet index	revision	revision		



mat'l. code				surface		tolerance		projection		product family	
				ISO 1302		ISO 406 ISO 1101				BSTIK	
lfr ecn no dr date				tolerances unless otherwise specified		angles		mm		title	
A B16303 JCO 13.11.15				linear				scale N/A		UNSHR.HEADER	
B B-21083 LMU 15.06.05										RA DR TMT POL	
C F-23305 AMA 16.02.19										dwg no sheet 4 of size	
				dr L.MULUN 13.11.05						77318 A3	
				engr J.COMPAGNON 13.11.05						type CUSTOMER Drawing	
				chr							
				app JMC 13.11.05							
sheet index		revision sheet									

FCI
FCIconnect.com
Copyright FCI