

Excellent Integrated System Limited

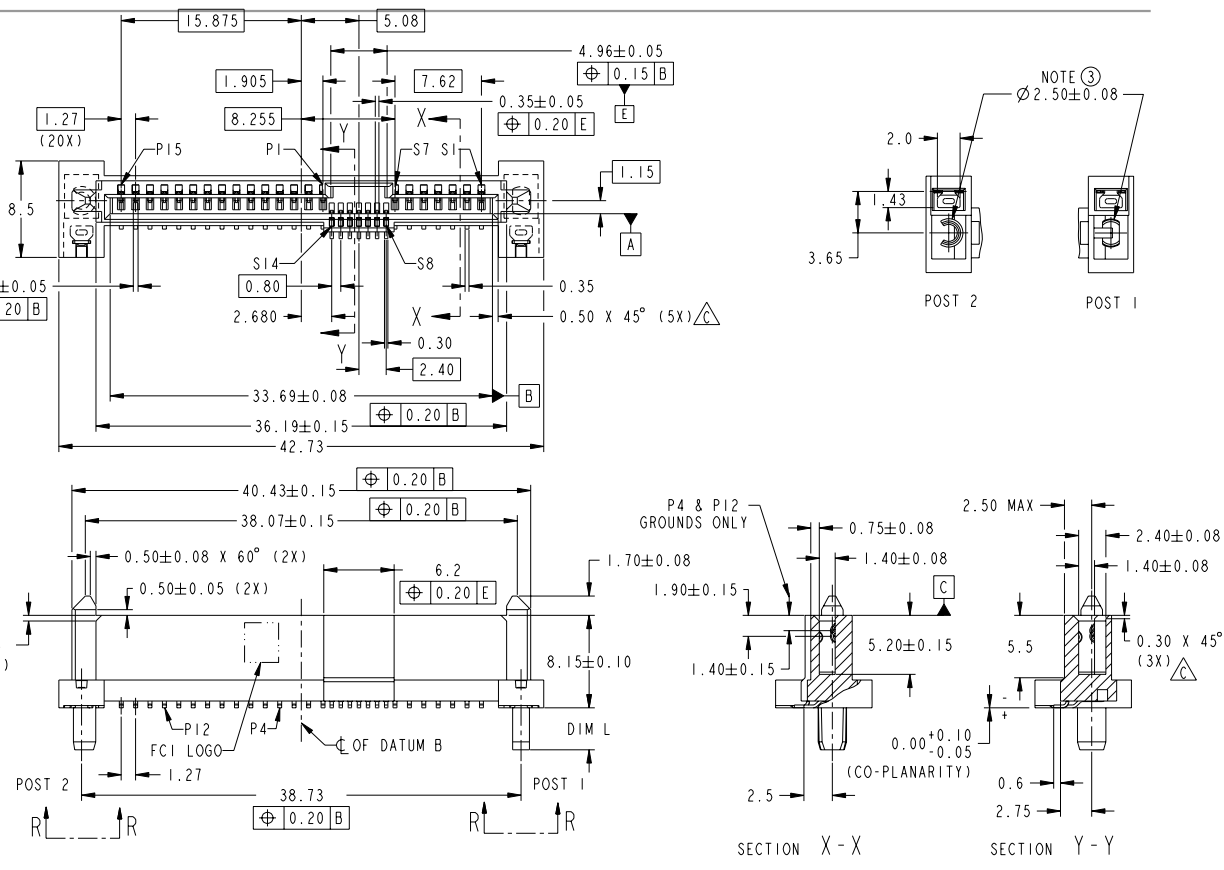
Stocking Distributor

Click to view price, real time Inventory, Delivery & Lifecycle Information:

[FCI](#)
[10076579-001LF](#)

For any questions, you can email us directly:
sales@integrated-circuit.com

PRODUCT NO
SEE TABLE



FCI
Copyright FCI

spec ref	-	dr	GL L00	2007-02-12	projection	MM	size	A3	scale	3:1
tolerance std	ISO 406 ISO 1101	eng	GL L00	2007-02-12			ecn no	S10-0228	rel level	-
TOLERANCES UNLESS OTHERWISE SPECIFIED		chr	GL L00	2010-10-28						
surface	linear	0.X	±				cat. no.	-	Product - Customer Drw	sheet 1 of 3
		0.XX	±0.20		FCI		title	SAS RECEPTACLE	10076579	rev
		0.XXX	±		www.fci.com		cat. no.	-	Product - Customer Drw	sheet 1 of 3
	angular	0°	±2°		www.fci.com		cat. no.	-	Product - Customer Drw	sheet 1 of 3

Print File - REC C - 2009-04-09

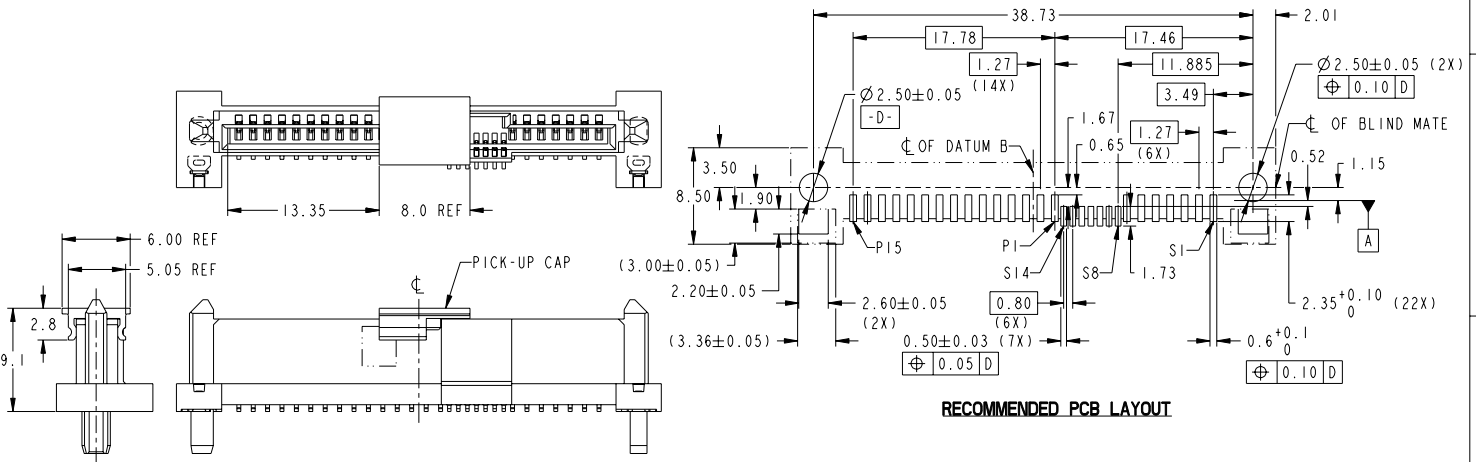
2

PDS: Rev :C

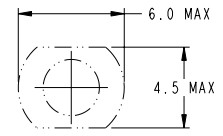
STATUS:Released

Printed: Nov 01, 2011

PRODUCT NO	DIM L	RECOMMENDED P.C. BOARD THICKNESS	PICK-UP CAP	PACKAGING	REMARK
10076579-001LF	3.7	4.57mm (0.018")	NO	TRAY	--
10076579-001CLF	3.7		YES		
10076579-001C-TRLF	3.7		YES	TAPE & REEL	
10076579-002LF	2.0	2.54mm (0.100")	NO	TRAY	--
10076579-002CLF	2.0		YES		
10076579-002C-TRLF	2.0		YES	TAPE & REEL	



RECOMMENDED PCB LAYOUT



RECOMMENDED SUCTION HEAD SIZE

PART WITH PICK-UP CAP, SEE NOTE ⑤

spec ref	-	dr	GL L00	2007-02-12	projection	MM	size	A3	scale	3:1
tolerance std	ISO 406 ISO 1101	eng	GL L00	2007-02-12			ecn no	S10-0228	rel level	-
TOLERANCES UNLESS OTHERWISE SPECIFIED		chr	GL L00	2010-10-28						
surface	linear	0.X	±	-			cat. no.	-	Product - Customer Drw	sheet 2 of 3
		0.XX	±0.20		FCI		title	SAS RECEPTACLE	dwg no	10076579
		0.XXX	±	-	www.fci.com		rev	C		
	angular	0°	±2°		www.fci.com		Product - Customer Drw	sheet 2 of 3		



Copyright FCI.

NOTES:

1. MATERIAL:
 - 1) HOUSING : HIGH TEMP TERMOPLASTIC, UL 94V-0
 - COLOUR : BLACK
 - 2) TERMINAL : COPPER ALLOY
 - 3) HOLD DOWN : COPPER ALLOY
2. FINISH :
 - 1) TERMINAL : 30µ" Au PLATING (CONTACT POINT) OVER 50µ" NICKEL
 - 2) SOLDER TAIL : 50µ" MIN Sn OVER 50µ" NICKEL
 - 3) HOLD DOWN : 50µ" MIN Sn OVER 50µ" NICKEL
- ③ THE DIM. IS MEASURED AT P.C. BOARD SITTING PLANE
- ④ PER SFF REV 1.3
- ⑤ PART WITH PICK-UP CAP, P/N XXXXXXXX-XXXC_LF
- ⑥ THE STD PACKAGING IS IN TRAY
7. FOR TAPE & REEL PACKAGING, SUFFIX "-TR" ADDED.
P/N XXXXXXXX-XXXC-TR_LF
8. THE HOUSING WILL WITHSTAND EXPOSURE TO 260°C PEAK TEMPERATURE FOR 10 SECONDS IN A CONVECTION, INFRA-RED OR VAPOR PHASE REFLOW OVEN
- ⑨ THIS PRODUCT MEETS EUROPEAN UNION DIRECTIVES AND OTHER COUNTRY REGULATIONS AS DESCRIBED IN GS-22-008
- ⑩ PART NUMBERS ENDING IN "LF" MEANS FOR NOTE 8 LEAD FREE IDENTIFICATION
- ⑪ A SYMBOL WILL BE NEXT TO ANY DIMENSION, VIEW, OR NOTE WHICH HAS BEEN MODIFIED WITH THE CURRENT DRAWING REVISION.

spec ref	-	dr	GL L00	2007-02-12	projection		size	A3	scale	3:1
tolerance std	ISO 406 ISO 1101	eng	GL L00	2007-02-12		MM	ecn no	S10-0228	rel level	-
TOLERANCES UNLESS OTHERWISE SPECIFIED		chr	GL L00	2010-10-28						
surface	ISO 1302	appr	JOEY NG	2010-10-28	TITLE		cat. no.	-	Product - Customer Drw	sheet 3 of 3
linear	0.X	±-		SAS RECEPTACLE		www.fci.com	dwg no	10076579	rev	C
	0.XX	±0.20								
	0.XXX	±-								
angular	0°	±2°								

Print File - REC - 2009-04-09

2

3

PDS: Rev :C

STATUS:Released

Printed: Nov 01, 2011



Copyright FCI.