

Excellent Integrated System Limited

Stocking Distributor

Click to view price, real time Inventory, Delivery & Lifecycle Information:

[FCI](#)
[75375-005LF](#)

For any questions, you can email us directly:
sales@integrated-circuit.com

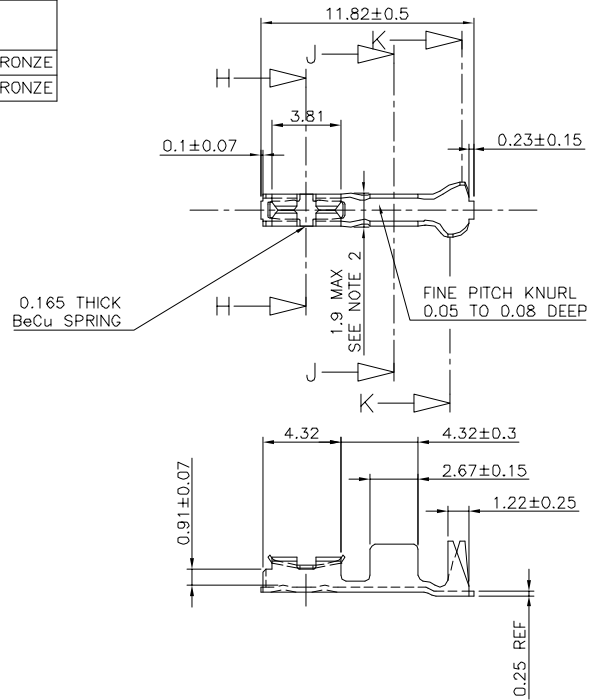
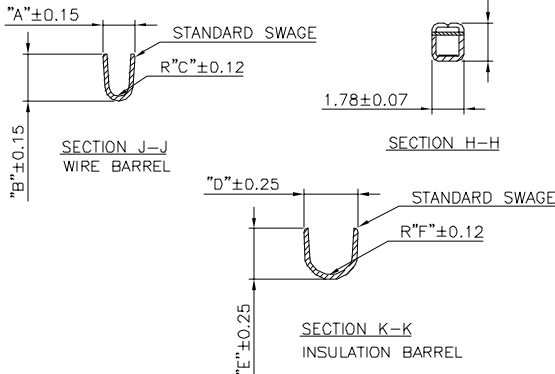
PRODUCT NO.	WIRE BARREL			INSULATION BRL.			AWG RANGE	BODY PLATING	SPRING PLATING	MATERIAL BODY
	A	B	C	D	E	F				
75375-005LF	1.78	1.78	0.43	3.53	3.05	1.27	22-26	TIN	TIN	1/2 HD PHOS.BRONZE
75375-006LF	2.64	2.64	0.53	3.53	3.05	1.27	18-20	TIN	TIN	1/2 HD PHOS.BRONZE

WHEN NEEDED, SUFFIX LETTER "LF" INDICATES THE PRODUCT IS RoHS COMPLIANT, SEE NOTE 4

WHEN SUFFIX "LF" IS REQUIRED, 2µm MIN MATTE TIN OVER 1.27 MIN Ni IS SUPPLIED INSTEAD OF SnPb.

WIRE SIZE AWG	CRIMP HEIGHT	INSULATION DIA.
18-20	1.07-1.12	1.07-2.62
22-26	0.81-0.86	0.91-2.62
28-32	0.66-0.71	0.71-1.37

RECOMMENDED WIRE STRIP LENGTH: 3.81±0.25



NOTES:

- PART TO MATE WITH 1.02 ROUND OR SQUARE PIN
- DIM ONLY FOR -003
- PERFORMANCE TEST ACCORDING TO BUS-12-110
- RoHS COMPATIBLE PRODUCT SPECIFICATIONS

a - PLATING:

- "LF" MEANS THE PRODUCT IS LEAD-FREE, 2µm MINIMUM MATTE TIN OVER 1.27µm MINIMUM NICKEL UNDERPLATE.

b - LABELING:

- MEETS PACKAGING SPECS AS PER GS-14-920

c - LEGAL STATEMENT: SEE GS-22-008

THE PRODUCT IS NOT INTENDED TO BE EXPOSED TO A MANUFACTURING SOLDER PROCESS.

mat'l. code	SEE DRAWING	surface	ISO 1382	tolerance	ISO 486	ISO 1001	projection	product family	BERGGON
ltr	ecn no	dr	date	tolerances unless otherwise specified		angles	linear	mm	title
K	F40421	PNZ	94.06			±13			JUMBO P.V. ASSEMBLY
L	FD5-0234	DLE	05.08.25			±2		scale 10:1	dwg no
M	FD5-0286	DLE	05.11.07						sheet 1 of 1
N	FD6-0217	DLE	06.07.11	dr	D LEGRAND	05.08.02			size
P	FD7-0120	DLE	07.01.31	engr	P NIZZI	05.08.02			A3
				chr	COMPAGNON	05.08.02			type
				appd	P NZ	05.08.02			CUSTOMER Drawing
sheet index	revision sheet								