



**Distributor of FCI: Excellent Integrated System Limited**

Datasheet of DAM15P500CSP82 - D-Sub Connector Plug, Male Pins 15 Position Through Hole, Right Angle Solder

Contact us: [sales@integrated-circuit.com](mailto:sales@integrated-circuit.com) Website: [www.integrated-circuit.com](http://www.integrated-circuit.com)

---

## **Excellent Integrated System Limited**

Stocking Distributor

Click to view price, real time Inventory, Delivery & Lifecycle Information:

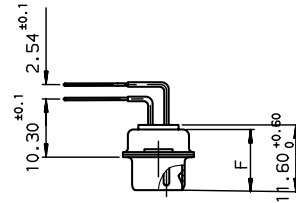
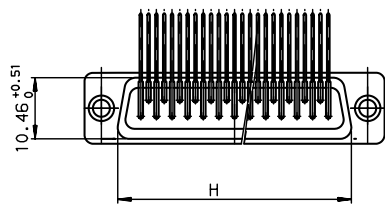
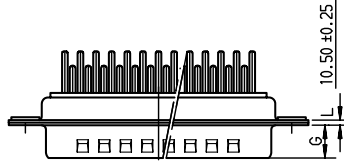
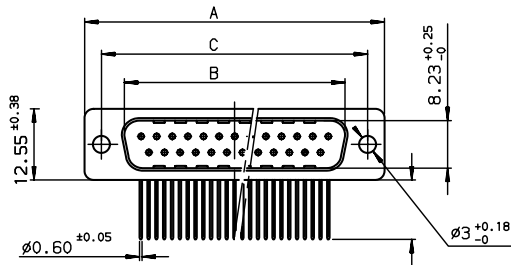
[FCI](#)

[DAM15P500CSP82](#)

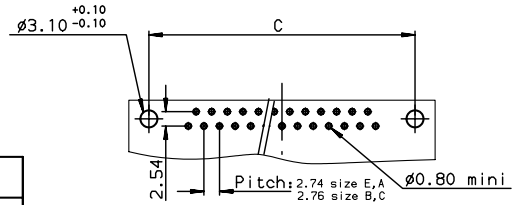
For any questions, you can email us directly:

[sales@integrated-circuit.com](mailto:sales@integrated-circuit.com)

Contact us: [sales@integrated-circuit.com](mailto:sales@integrated-circuit.com) Website: [www.integrated-circuit.com](http://www.integrated-circuit.com)



PC BOARD LAYOUT



**REFERENCE SPECIFICATIONS**  
-NFC 93425 (in compliance with HE 501)

**PHYSICAL CHARACTERISTICS**  
-INSULATOR MATERIAL: THERMOPLASTIC UL94V0  
-CONTACT MATERIAL: BRASS  
PLATING: GOLD OVER NICKEL

-SHELLS: STEEL, CADMIUM PLATED

**ELECTRICAL CHARACTERISTICS**  
-NOMINAL CURRENT: 7.5A  
-CONTACT RESISTANCE: <7.3 m Ohms  
-CONTACT/CONTACT: >1000 V  
-CONTACT/GROUND: >1200 V  
-INSULATION RESISTANCE: >5000 MOhms

**ENVIRONMENTAL CHARACTERISTICS**  
- CLIMATIC CATEGORY: 55/125/56  
TEMPERATURE RANGE -55°C TO +125°C  
DAMP HEAT STEADY STATE 56 DAYS  
SALT SPRAY 48 HOURS

Dimensions are in millimeters

Shell size	Number of contacts	A <sup>+0.76</sup> <sub>0</sub>	B <sup>+0.25</sup> <sub>0</sub>	C <sup>+0.12</sup> <sub>0</sub>	F <sup>+0.51</sup> <sub>0</sub>	G <sup>+0.25</sup> <sub>0</sub>	H <sup>+0.51</sup> <sub>0</sub>	L <sup>+0.22</sup> <sub>0</sub>	Part number
E	09	30.43	16.46	24.99	10.64	6.05	19.02	0.80	-
A	15	38.76	24.54	33.32	10.64	6.05	27.25	0.80	DAM15P500CSP82
B	25	52.65	38.25	47.04	10.64	6.05	41.02	0.80	-
C	37	68.94	54.71	63.50	10.64	6.05	57.45	0.80	-

Copyright FCI

www.fciconnect.com		surface ISO 1302	tolerance std ISO 406 ISO 1101	projection mm
		TOLERANCES UNLESS OTHERWISE SPECIFIED		
		0.X	±0.1	size A3
		0.XX	±0.1	Scale 1.5
		0.XXX	±0.1	ECN L508-0212
Dr	M PESSON	2006/04/11	Product family	D-SUB
Eng	P LEGARE	2006/04/11	Spec ref	-
Chr	P LEGARE	2006/04/11		
Appr	P LEGARE	2006/04/11		
<b>D SUB MARK I MALE</b> RA SPECIF SP82 catalog no				Rev. <b>C01-8637-1724</b> C
				CUSTOMER sheet 1 of 1

rev	ecm no	dr	date
A	L506-0360	MPE	2006/04/11
B	L506-0097	LCO	2006/07/27
C	L508-0212	MPE	2008/11/18
-	-	-	-
-	-	-	-
-	-	-	-

REV F - 2006-04-17