



**Distributor of FCI: Excellent Integrated System Limited**

Datasheet of DBO5W5P343H406JLF - D-Sub Connector Plug, Male Pins 5 (Power) Position Through Hole Solder

Contact us: [sales@integrated-circuit.com](mailto:sales@integrated-circuit.com) Website: [www.integrated-circuit.com](http://www.integrated-circuit.com)

---

## Excellent Integrated System Limited

Stocking Distributor

Click to view price, real time Inventory, Delivery & Lifecycle Information:

[FCI](#)

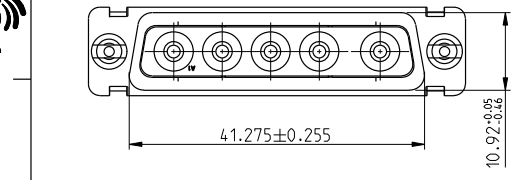
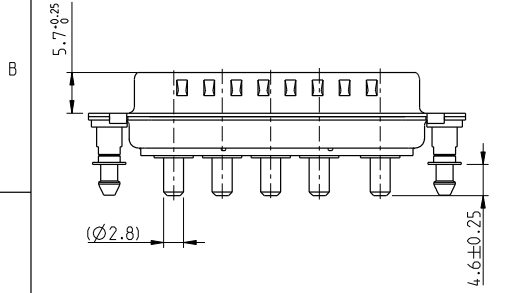
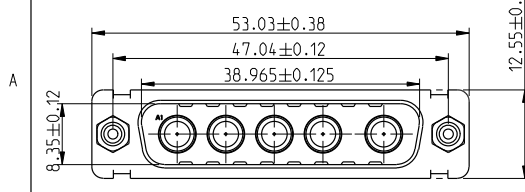
[DBO5W5P343H406JLF](#)

For any questions, you can email us directly:

[sales@integrated-circuit.com](mailto:sales@integrated-circuit.com)

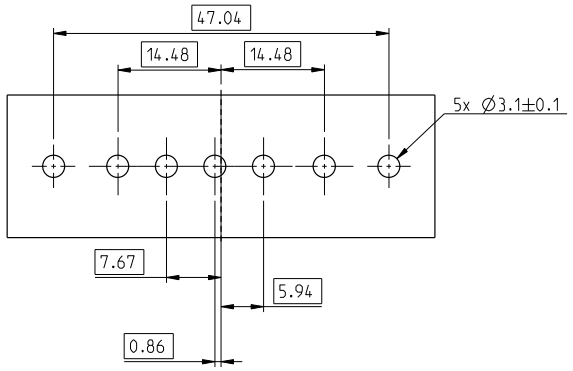
Contact us: sales@integrated-circuit.com Website: www.integrated-circuit.com

Part number: DB05W5P343H406JLF



Other than lead length, which is called out in this specification, this parts conforms to drawing C01-8639-2314 / DB05W5P343H40LF

LAYOUT AND CONNECTOR DIMENSIONS



Copyright FCI

rev	ecm no	dr	date
A	F10-0246	APA	10/11/17
B	F10-0260	APA	10/12/21
-	-	-	-
-	-	-	-
-	-	-	-
-	-	-	-

www.fciconnect.com		Surface ISO 1302	-	Tolerance std ISO 406	ISO 1101	projection mm	mm
TOLERANCES UNLESS OTHERWISE SPECIFIED							
Dr	A PARRENIN	10/11/17	ANGULAR	0.x	±/	size	A3
Eng	A PARRENIN	10/11/17	LINEAR	0.xx	±/	Scale	2:1
Chr	A PARRENIN	10/11/17	0°	±/	±/	ECN	F10-0260
Appr	JM PHAM-VAN	10/11/17	Product family		Sub-D	Spec ref	/
FCI		Title		D-Sub Straight		Design no	C01-8639-2361
		Customer special 3.2mm PCB application				Rev.	B
catalog no				CUST		sheet	1 of 1