



Distributor of FCI: Excellent Integrated System Limited

Datasheet of DEO2V2P300H30LF - D-Sub Connector Plug, Male Pins and Female Sockets 2 (Power) Position Through Hole Solder

Contact us: sales@integrated-circuit.com Website: www.integrated-circuit.com

Excellent Integrated System Limited

Stocking Distributor

Click to view price, real time Inventory, Delivery & Lifecycle Information:

[FCI](#)

[DEO2V2P300H30LF](#)

For any questions, you can email us directly:

sales@integrated-circuit.com

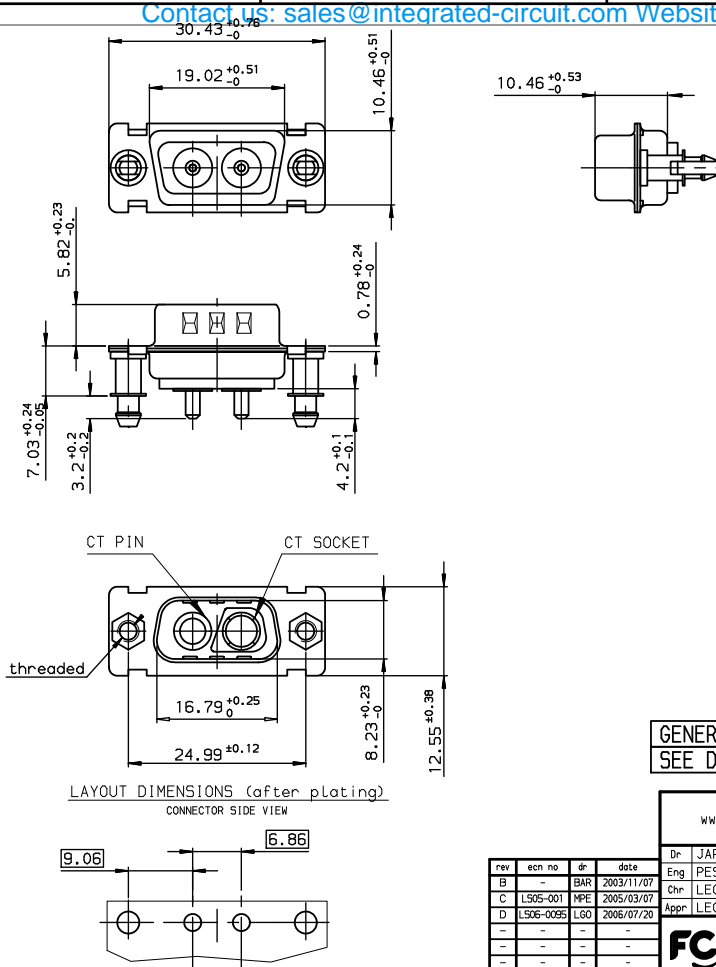
Contact us: sales@integrated-circuit.com Website: www.integrated-circuit.com

A

B

C

D



LAYOUT DIMENSIONS (after plating)
CONNECTOR SIDE VIEW

TIN-LEAD PART NUMBER

DE02V2P300H30	UNC 4.40
DEL2V2P300H30	M3
PART NUMBER	Threaded A

LEAD FREE PART NUMBER

DE02V2P300H30LF	UNC 4.40
DEL2V2P300H30LF	M3
PART NUMBER	Threaded A

GENERAL CHARACTERISTICS AND ROHS INFORMATIONS:
SEE DRAWING C01-8639-0001

www.fciconnect.com		surface	tolerance std	projection	mm
		ISO 1302	ISO 406 ISO 1101		
TOLERANCES UNLESS OTHERWISE SPECIFIED					
Dr	JARRY	1997/05/05	ANGULAR	0.x	±0.1
Eng	PESSON	1997/05/05	LINEAR	0.xx	±0.1
Chr	LEGARE	1997/05/05	0.x	±0.1	ECN
Appr	LEGARE	1997/05/05	0.xxx	±0.1	LS06-0095
		Product Family	D-SUB Spec ref -		
		PIN CONNECTOR WITH TWO POWERS CONTACTS		size	A3
title		catalog no		Part No	C01-8639-1529
				Rev.	D
				CUSTOMER	sheet 1 of 1

Copyright FCI.
FCI

REV F - 2006-04-17