

## Excellent Integrated System Limited

Stocking Distributor

Click to view price, real time Inventory, Delivery & Lifecycle Information:

[Molex Connector Corporation](#)  
[0014441409](#)

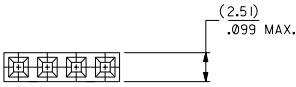
For any questions, you can email us directly:

[sales@integrated-circuit.com](mailto:sales@integrated-circuit.com)

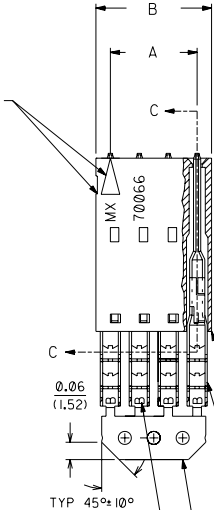
OPTION A

NOTES:

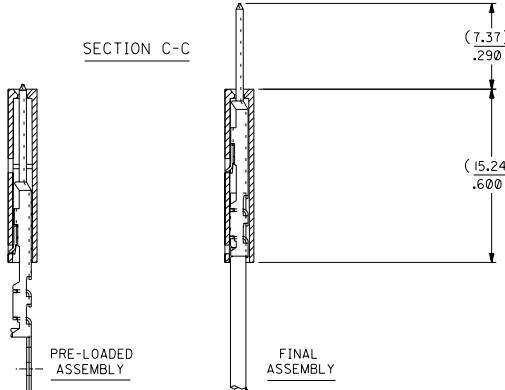
- 1) TO BE USED WITH (26) AWG, STRANDED WIRE WITH (1.35)/.053 DIA. MAX. INSULATION.
- 2) SEE CHART FOR CIRCUIT SIZES.
- 3) STANDARD PACKAGING PER PK-70873-0001. OPTIONAL PACKAGING MAY BE AVAILABLE, REQUEST DWG. PK-70475.
- 4) PARTS STACKABLE END TO END AND SIDE BY SIDE ON (2.54)/.100 CENTERS.
- 5) REFER TO PRODUCT SPECIFICATION: PS-70475.
- 6) SEE DWG. SDA-70475-\*\*\*\* (SHT.3) FOR OPTIONAL HOUSING DETAILS.
- 7) 4 CIRCUIT SHOWN.
- 8) MATES WITH (2.54)/.100 CENTER SINGLE OR DUAL-ROW FEMALE CONNECTORS.
- 9) 2 CIRCUIT ASSEMBLIES SUPPLIED AS GROUPED PAIRS.



CIRCUIT NO. 1 IDENTIFICATION SLOT OR ARROW



SECTION C-C



HOUSING PART NO. 70066-\*\*\*\* MATERIAL: G.F. POLYESTER, 94V-0

TERMINAL PART NO. 70110-\*\*\*\* MATERIAL: PHOSPHOR BRONZE PLATING PER ES-88-\*\*\*\*

WIRE (SEE NOTE 1)

I.D. SLOT CODE TO WIRE GAUGE CHART	WIRE GAUGE
I.D. SLOT CODE	
B	26 AWG.

PLATING CODE (STRIPE ON CARRIER STRIP)	
PLATING	COLOR
15 GOLD	YELLOW

15 GOLD - .000015 MINIMUM GOLD IN SELECT AREA WITH .000075 MINIMUM TIN IN SELECT AREA OVER .000050 MINIMUM NICKEL OVER-ALL.

\*THE PRIMARY SHIPPING CARTON WILL BE LABELED "COMPLIANT TO RoHS DIRECTIVE 2002/95/EC AND ELV ANNEX II OF DIRECTIVE 2000/53/EC". CARTONS WITHOUT THIS LABEL MAY CONTAIN PRODUCT WITH LEAD.

CKT. SIZE	A	B	EDP. NO.	ENC. NO.
2	( 2.54 ) 1.00	( 5.05 ) .199	14-44-1402	A-70475-0701
3	( 5.08 ) .200	( 7.59 ) .299	14-44-1403	A-70475-0702
4	( 7.62 ) .300	( 10.13 ) .399	14-44-1404	A-70475-0703
5	( 10.16 ) .400	( 12.67 ) .499	14-44-1405	A-70475-0704
6	( 12.70 ) .500	( 15.21 ) .599	14-44-1406	A-70475-0705
7	( 15.24 ) .600	( 17.75 ) .699	14-44-1407	A-70475-0706
8	( 17.78 ) .700	( 20.29 ) .799	14-44-1408	A-70475-0707
9	( 20.32 ) .800	( 22.83 ) .899	14-44-1409	A-70475-0708
10	( 22.86 ) .900	( 25.37 ) .999	14-44-1410	A-70475-0709
11	( 25.40 ) 1.000	( 27.91 ) 1.099	14-44-1411	A-70475-0710
12	( 27.94 ) 1.100	( 30.45 ) 1.199	14-44-1412	A-70475-0711
13	( 30.48 ) 1.200	( 32.99 ) 1.299	14-44-1413	A-70475-0712
14	( 33.02 ) 1.300	( 35.53 ) 1.399	14-44-1414	A-70475-0713
15	( 35.56 ) 1.400	( 38.07 ) 1.499	14-44-1415	A-70475-0714
16	( 38.10 ) 1.500	( 40.61 ) 1.599	14-44-1416	A-70475-0715
17	( 40.64 ) 1.600	( 43.15 ) 1.699	14-44-1417	A-70475-0716
18	( 43.18 ) 1.700	( 45.69 ) 1.799	14-44-1418	A-70475-0717
19	( 45.72 ) 1.800	( 48.23 ) 1.899	14-44-1419	A-70475-0718
20	( 48.26 ) 1.900	( 50.77 ) 1.999	14-44-1420	A-70475-0719
21	( 50.80 ) 2.000	( 53.31 ) 2.099	14-44-1421	A-70475-0720
22	( 53.34 ) 2.100	( 55.85 ) 2.199	14-44-1422	A-70475-0721
23	( 55.88 ) 2.200	( 58.39 ) 2.299	14-44-1423	A-70475-0722
24	( 58.42 ) 2.300	( 60.93 ) 2.399	14-44-1424	A-70475-0723
25	( 60.96 ) 2.400	( 63.47 ) 2.499	14-44-1425	A-70475-0724

13	12	11	10	9	8	7	6	5	4	3	2	1
----	----	----	----	---	---	---	---	---	---	---	---	---

<table border="1"> <tr><th>I.D. SLOT CODE TO WIRE GAUGE CHART</th><th>WIRE GAUGE</th></tr> <tr><td>I.D. SLOT CODE</td><td></td></tr> <tr><td>B</td><td>26 AWG.</td></tr> </table>		I.D. SLOT CODE TO WIRE GAUGE CHART	WIRE GAUGE	I.D. SLOT CODE		B	26 AWG.	<table border="1"> <tr><th colspan="2">PLATING CODE (STRIPE ON CARRIER STRIP)</th></tr> <tr><th>PLATING</th><th>COLOR</th></tr> <tr><td>15 GOLD</td><td>YELLOW</td></tr> </table>		PLATING CODE (STRIPE ON CARRIER STRIP)		PLATING	COLOR	15 GOLD	YELLOW	<p>15 GOLD - .000015 MINIMUM GOLD IN SELECT AREA WITH .000075 MINIMUM TIN IN SELECT AREA OVER .000050 MINIMUM NICKEL OVER-ALL.</p>		<p>*THE PRIMARY SHIPPING CARTON WILL BE LABELED "COMPLIANT TO RoHS DIRECTIVE 2002/95/EC AND ELV ANNEX II OF DIRECTIVE 2000/53/EC". CARTONS WITHOUT THIS LABEL MAY CONTAIN PRODUCT WITH LEAD.</p>		<table border="1"> <tr><th>REVISED PER ECR NO.</th><th>DATE</th></tr> <tr><td>10-17-88</td><td>10/13/84</td></tr> </table>		REVISED PER ECR NO.	DATE	10-17-88	10/13/84	<table border="1"> <tr><th>INCH</th><th>METRIC</th></tr> <tr><td>± .010</td><td>± 0.25</td></tr> <tr><td>± .014</td><td>± 0.35</td></tr> </table>		INCH	METRIC	± .010	± 0.25	± .014	± 0.35	<table border="1"> <tr><th>FILE NAME</th><th>DATE</th></tr> <tr><td>SDA-70475-0701-0724</td><td>10/13/84</td></tr> </table>		FILE NAME	DATE	SDA-70475-0701-0724	10/13/84
I.D. SLOT CODE TO WIRE GAUGE CHART	WIRE GAUGE																																						
I.D. SLOT CODE																																							
B	26 AWG.																																						
PLATING CODE (STRIPE ON CARRIER STRIP)																																							
PLATING	COLOR																																						
15 GOLD	YELLOW																																						
REVISED PER ECR NO.	DATE																																						
10-17-88	10/13/84																																						
INCH	METRIC																																						
± .010	± 0.25																																						
± .014	± 0.35																																						
FILE NAME	DATE																																						
SDA-70475-0701-0724	10/13/84																																						