

Excellent Integrated System Limited

Stocking Distributor

Click to view price, real time Inventory, Delivery & Lifecycle Information:

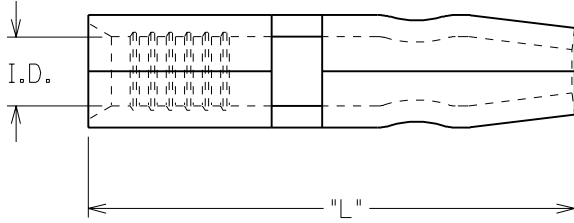
[Molex Connector Corporation](#)
[0190330008](#)

For any questions, you can email us directly:
sales@integrated-circuit.com

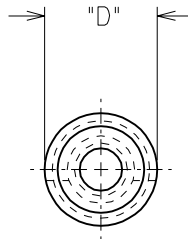
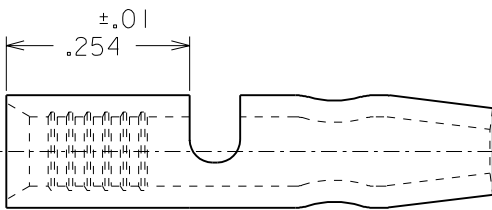
PART NUMBER	WIRE RANGE AWG	±.003 "I.D."	±.002 "D"	±.02 "L"
A-159	22-18	.065	.180	.734
A-169	22-18	.065	.156	.674
B-179	16-14	.084	.180	.734
B-189	16-14	.084	.156	.674

DRWG. NO. CD-1802

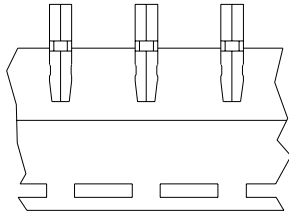
PART NUMBERS ARE FOR LOOSE PIECE. TO ORDER PARTS ON TAPE ADD "T" TO END OF PART NUMBER



MATERIAL: COPPER .031 ±.001 THICK
FINISH: ELECTRO-TIN PLATING
THICKNESS .000030 MINIMUM



LTR.	REVISIONS
C	.064 WAS .126 .084 WAS .156 ETC60466 6/18 RCM
B	ADDED PLATING THICKNESS ETC60363 3/14 RCM
A	ADDED TOLERANCES REVISED DIMENSIONS ETC60322 2/6 RCM



PARTS ON TAPE

DIMENSIONS SHOWN (METRIC) INCH	
UNLESS OTHERWISE SPECIFIED TOLERANCES: ANGULAR ± 1/2°	
INCH	
3 PLACE	± .005
2 PLACE	± .01
1 PLACE	± ---
METRIC	
3 PLACE	± ---
2 PLACE	± 0.13
1 PLACE	± 0.25
DRAFT WHERE APPLICABLE MUST REMAIN WITHIN DIMENSIONS	
DRWG. BY	RCM
CHK'D. BY	RWD
APP'D. BY	RWD
SCALE	NO:NE

REVISE ONLY ON CAD SYSTEM

TITLE
KRIMPTITE
MALE BULLET SNAP PLUG

molex **ETC INC.** SHEET NO. DATE
PINELLAS PARK, FLA. 33781 U.S.A. 92/09/29

PART NO. DRWG. NO.
SEE CHART CD-1802

FILE NAME THIS DRAWING CONTAINS INFORMATION THAT IS PROPRIETARY TO MOLEX-ETC INC. AND SHOULD NOT BE USED WITHOUT WRITTEN PERMISSION. DIV. SIZE
CD1802 CST A

6 5 4 3 2 1