

Excellent Integrated System Limited

Stocking Distributor

Click to view price, real time Inventory, Delivery & Lifecycle Information:

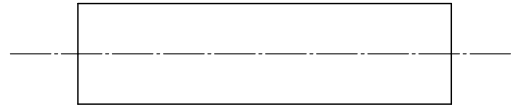
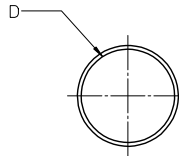
[Molex Connector Corporation](#)

[0192700063](#)

For any questions, you can email us directly:

sales@integrated-circuit.com

| BLACK | | RED | | MIN | MAX | RECOVERED | LENGTH |
|-----------------|--------------------|-----------------|--------------------|-----------------|--------------|--------------|-------------|
| MATERIAL NUMBER | ENGINEERING NUMBER | MATERIAL NUMBER | ENGINEERING NUMBER | EXPANDED ID "D" | RECOVERED ID | WALL THK REF | FEET/METERS |
| 192700008 | PFB-04-1BK | 192700013 | PFB-04-1RD | .400/10.16 | .150/3.81 | .060/1.53 | 4.0/1.2 |
| 192700018 | PFB-07-1BK | 192700023 | PFB-07-1RD | .750/19.05 | .220/5.59 | .095/2.41 | |
| 192700028 | PFB-11-1BK | 192700033 | PFB-11-1RD | 1.100/27.94 | .375/9.53 | .120/3.05 | |
| 192700038 | PFB-15-1BK | 192700043 | PFB-15-1RD | 1.500/38.10 | .500/19.05 | .140/3.56 | |
| 192700048 | PFB-20-1BK | 192700053 | PFB-20-1RD | 2.000/50.80 | .750/19.05 | .155/3.98 | |
| 192700058 | PFB-30-1BK | 192700063 | PFB-30-1RD | 3.540/89.92 | 1.18/29.97 | .155/3.98 | |
| 192700068 | PFB-40-1BK | 192700073 | PFB-40-1RD | 4.72/119.89 | 1.57/39.88 | .170/4.37 | |



SALES DRAWING

NOTES:

1. MATERIAL: POLYOLEFIN
2. OTHER CUT LENGTHS ARE AVAILABLE.
3. PARTS ARE RoHS COMPLIANT.

(A1)

| CHANGED TITLE E.C. NO: IPG/2013-0982 DRAWING: JASO1 2013/01/10 CHKD: IRACNE/L 2013/01/10 APPR: IRACNE/L 2013/01/31 REV: A1 | QUALITY SYMBOLS ▽=0 ▽=0 | GENERAL TOLERANCES (UNLESS SPECIFIED) <table border="1"> <thead> <tr> <th></th> <th>mm</th> <th>INCH</th> </tr> </thead> <tbody> <tr> <td>4 PLACES</td> <td>± .---</td> <td>± .---</td> </tr> <tr> <td>3 PLACES</td> <td>± .---</td> <td>± .010</td> </tr> <tr> <td>2 PLACES</td> <td>± 0.25</td> <td>± .02</td> </tr> <tr> <td>1 PLACE</td> <td>± 0.51</td> <td>± .---</td> </tr> <tr> <td colspan="3">ANGULAR ± .---</td> </tr> </tbody> </table> | | mm | INCH | 4 PLACES | ± .--- | ± .--- | 3 PLACES | ± .--- | ± .010 | 2 PLACES | ± 0.25 | ± .02 | 1 PLACE | ± 0.51 | ± .--- | ANGULAR ± .--- | | | DIMENSION STYLE IN/MM | SCALE 1:1 | DESIGN UNITS INCH | THIRD ANGLE PROJECTION |
|--|--------------------------------------|---|---|--|--|----------|--------|--------|----------|--------|--------|----------|--------|-------|---------|--------|--------|----------------|--|--|---------------------------------|---------------------|-----------------------------|------------------------|
| | | mm | INCH | | | | | | | | | | | | | | | | | | | | | |
| | 4 PLACES | ± .--- | ± .--- | | | | | | | | | | | | | | | | | | | | | |
| | 3 PLACES | ± .--- | ± .010 | | | | | | | | | | | | | | | | | | | | | |
| 2 PLACES | ± 0.25 | ± .02 | | | | | | | | | | | | | | | | | | | | | | |
| 1 PLACE | ± 0.51 | ± .--- | | | | | | | | | | | | | | | | | | | | | | |
| ANGULAR ± .--- | | | | | | | | | | | | | | | | | | | | | | | | |
| | | DRAWN BY: BENDERLE DATE: 2004/09/23 | CHECKED BY: R. DEROSS DATE: 2004/09/23 | APPROVED BY: R. DEROSS DATE: 2004/09/23 | TITLE POLYOLEFIN HEAT SHRINK TUBING 19270 SERIES | | | | | | | | | | | | | | | | | | | |
| | | MATERIAL NO. SEE CHART | DOCUMENT NO. SD-19270-001 | | SHEET NO. 1 OF 1 | | | | | | | | | | | | | | | | | | | |
| DRAFT WHERE APPLICABLE MUST REMAIN WITHIN DIMENSIONS | | | | | | | | | | | | | | | | | | | | | | | | |