

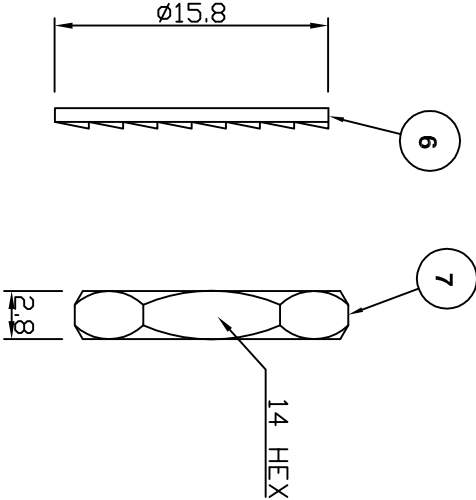
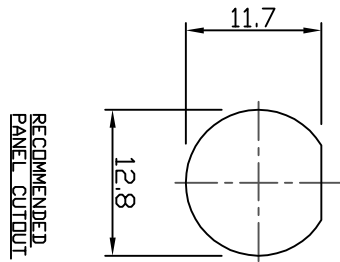
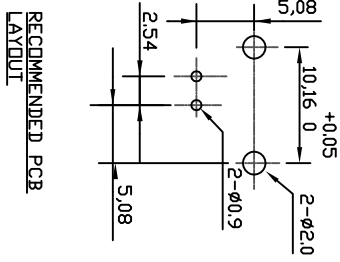
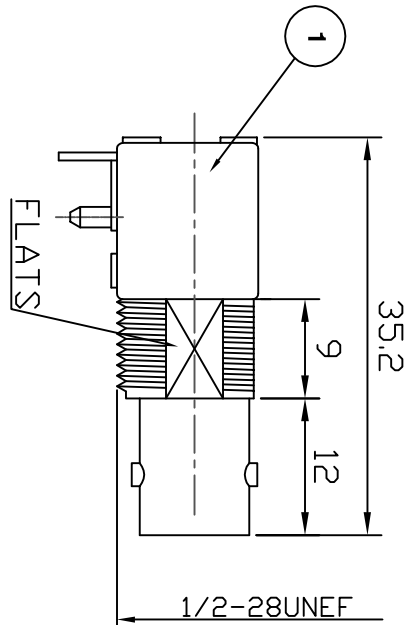
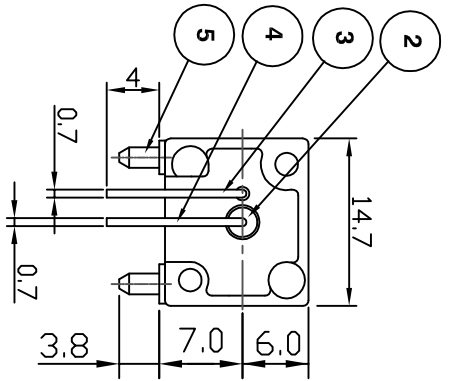
Excellent Integrated System Limited

Stocking Distributor

Click to view price, real time Inventory, Delivery & Lifecycle Information:

[Bel Fuse Inc.](#)
[VBM211](#)

For any questions, you can email us directly:
sales@integrated-circuit.com



Electrical Characteristics

Nominal Impedance: 50 ohms
 Frequency Range: DC to 4 GHz
 VSWR: 2:1 maximum
 Operating Voltage (rms): 500 V maximum at sea level
 Dielectric Withstand Voltage (rms): 1500 V maximum at sea level
 Contact Resistance: 3.0 milliohms maximum
 Insulation Resistance: 5000 megohms minimum

Mechanical Characteristics

Mating Cycles: 500 cycles minimum

Environmental Characteristics

Temperature Range: -40 °C to +85 °C

REF.	DESCRIPTION	MATERIAL	PLATING
1	Body	Zinc Alloy	Nickel
2	Insulator	Polypropylene	
3	Ground Terminal	Brass	Tin
4	Socket Contact	Phosphor	Gold
5	Mount Post	Brass	Tin >5 Micron
6	Lock Washer	Iron	Nickel
7	Hex Nut	Brass	Nickel

DESCRIPTION OF REVISION	APPVD	ISS	DATE
ECN 2015-010	JC	5	05 Nov 2015
Complete Update	KA	4	13 Nov 2015
Updated for RoHS compliance	JW	3	30 Nov 2015
CAD Issue	SN	2	01 Dec 2015
First Issue	SN	1	15 Nov 2015

SCALE: Not To Scale

DIMENSIONS: mm

TOLERANCES:
 ± 0.2mm unless
 otherwise stated

DRAWN BY: J Williams

CHECKED BY: A Tusi

APPROVED BY: A Herbert

DATE: 30 Aug 06

TITLE:

**BNC Right Angle PCB Mount
 Jack Low Profile**

PART NUMBER:

VBM211

PAGE: 1 of 1

