

Excellent Integrated System Limited

Stocking Distributor

Click to view price, real time Inventory, Delivery & Lifecycle Information:

[Molex Connector Corporation](#)
[0349510620](#)

For any questions, you can email us directly:

sales@integrated-circuit.com

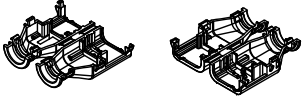
20 19 18 17 16 15 14 13 12 11 10 9 8 7 6 5 4 3 2 1

TABLE OF CONTENTS	
SHEET NO.	SHEET DESCRIPTION
1	NOTES AND BOM
2	CONFIGURATIONS
3	BACKSHELL DETAIL

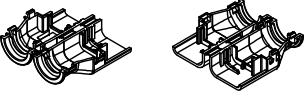
BILL OF MATERIALS (BOM)				
PART NUMBER	CIRCUIT SIZE	RIBS	STATUS	MATING ASSEMBLY DRAWING
34951-0610	2X3	YES	SALEABLE	SD-33472-061
34951-0620	2X3	NO	SALEABLE	SD-33472-061
34951-0810	2X4	YES	DESIGN CONCEPT	SD-33472-081
34951-0820	2X4	NO	DESIGN CONCEPT	SD-33472-081
34951-1210	2X6	YES	SALEABLE	SD-33472-121
34951-1220	2X6	NO	SALEABLE	SD-33472-121

BACKSHELL NOTES: VALID UNLESS OTHERWISE SPECIFIED

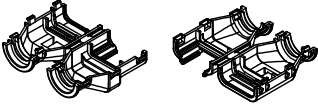
1. GENERAL:
 - a. APPLICATION SPECIFICATION SEE: AS-34951-001
 - DESIGNED TO MATE WITH RECEPTACLE SEALED ASSEMBLY AS SPECIFIED IN BOM
 - COMPONENTS ARE OPTIONAL AND MUST BE PURCHASED SEPERATELY
 - BACKSHELL DESIGN IS OWNED BY SCHLEMMER
 - b. PRODUCT SPECIFICATION
 - THESE PRODUCTS ARE ONE TIME USE ONLY.
 - REMOVAL FORCE OF THE BACKSHELL FROM THE MOLEX CONNECTOR TO BE 100N MIN.
 - REMOVAL FORCE OF SLIT CONVOLUTE FROM THE WITH RIB OPTION BACKSHELLS TO BE 100N MIN.
 - REMOVAL FORCE OF UNSLIT CONVOLUTE FROM THE WITH RIB OPTION BACKSHELLS TO BE 100N MIN.
 - c. PACKAGING SPECIFICATION SEE PK-31302-118
 - d. PARTS MUST BE IN COMPLIANCE TO MOLEX CHEMICAL SUBSTANCES FOR PRODUCTS AND PACKAGING SPECIFICATION: GEHS-699000-300
 - e. DATA MUST BE SUBMITTED UNDER THE MOLEX PART NUMBER TO IMDS (COMPANY ID#13255)
1. FOLLOWING PRODUCTION CODES TO BE PRESENT
 - DATE CODE
 - HOLD CAVITY CODE
 - MOLEX LOGO
 - RECYCLE CODE
 - SUPPLIER PART NUMBER
2. DESIGN - MATERIALS:
 - a. PA66 0% GLASS FILLED
 - b. BLACK
3. DESIGN GEOMETRY:
 - a. THIS IS A 100% CAD GENERATED PART. THE CAD MATHEMATICAL DATA IS THE MASTER FOR THIS PART. FOR DIMENSIONAL OR ANY INFORMATION NOT SHOWN ON THIS DRAWING, ANALYZE THE CAD MODEL.
 - b. GEOMETRIC DIMENSIONS AND TOLERANCES PER ASME Y14.5M - 2009
 - c. CORNERS SHOWN AS SHARP TO BE R 0.1
 - d. VISUAL DEFECTS SHALL MEET COSMETEK STANDARD PS-45499-002 (CLASS B).
 - e. DRAFT OF 2° PRESENT.
 - f. ALLOWABLE FLASH, PARTING LINES MISMATCH, EJECTOR PINS MARK, AND GATE VESTIGE TO BE +0.30 MAX PROTUSION.



2X3 RECEPTACLE



2X4 RECEPTACLE



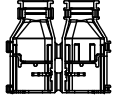
2X6 RECEPTACLE

A6	UPDATED BILL OF MATERIALS
A5	UPDATED STATUS COLUMN
A4	MINOR NOMENCLATURE CLEAN UP
A3	UPDATED VIEWSET & NOTES
A2	UPDATED REFERENCE DRAWINGS
A1	UPDATED NOTES
A	INITIAL RELEASE
REV	DESCRIPTION
SCALE	1:1
DESIGN UNITS	METRIC
THIRD ANGLE PROJECTION	

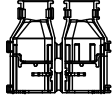
ENTER DESCRIPTION EC NO. VAL2015-1633 DRAWN: MOLEX/DAHAL 2/05/05/11 CHCK: 34951-1210 APPR: MOLEX/DAHAL 2/05/05/11 REV:	QUALITY SYMBOLS	GENERAL TOLERANCES (UNLESS SPECIFIED)	DRAGON STYLE	DATE	TITLE
	▽=0	4 PLACES ±0.05	mm	DAHAL	2013/03/27
	▽=0	3 PLACES ±0.1	INCH	CHECKED BY	DATE
	▽=0	2 PLACES ±0.15		APPROVED BY	DATE
		1 PLACE ±0.3		WKOSHY	2013/04/08
		0 PLACE ±0.5			
		ANGULAR ±3°			
		DRAFT WHERE APPLICABLE MUST REMAIN WITHIN DIMENSIONS			
			SEE BOM		
			THIS DRAWING CONTAINS INFORMATION THAT IS PROPRIETARY TO MOLEX INCORPORATED AND SHOULD NOT BE USED WITHOUT WRITTEN PERMISSION		

19 18 17 16 15 14 13 12 11 10 9 8 7 6 5 4 3 2 1

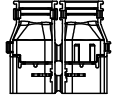
CONFIGURATION



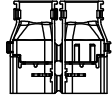
34951-0610
2X3 RECEPTACLE WITH RIBS



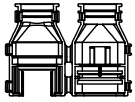
34951-0620
2X3 RECEPTACLE WITHOUT RIBS



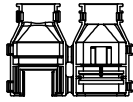
34951-0810
2X4 RECEPTACLE WITH RIBS



34951-0820
2X4 RECEPTACLE WITHOUT RIBS



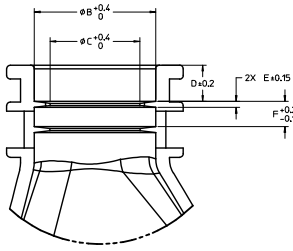
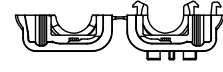
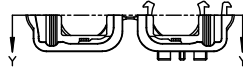
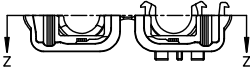
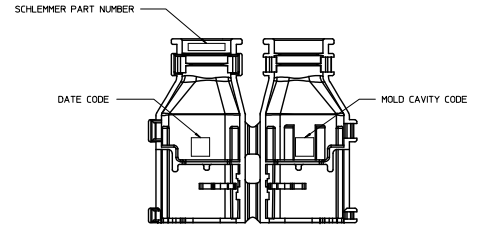
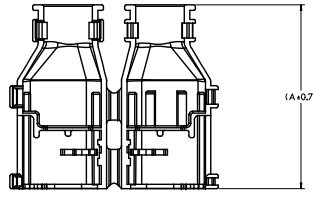
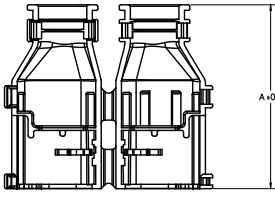
34951-1210
2X6 RECEPTACLE WITH RIBS



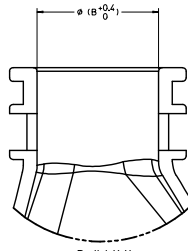
34951-1220
2X6 RECEPTACLE WITHOUT RIBS

ENTER DESCRIPTION EC NO. VAL2005-1693 DRAWN: RIBOSZEMKA 2015/05/11 CHK: [blank] APPR: [blank] REV: [blank]	QUALITY SYMBOLS	GENERAL TOLERANCES (UNLESS SPECIFIED)	DRIMENSION STYLE	SCALE	DESIGN UNITS	THIRD ANGLE PROJECTION
	▽=0	mm INCH	MM ONLY	1:1	METRIC	☉
	▽=0	4 PLACES ± --- ± ---	DRAWN BY DATE	DAHAL 2013/03/27	TITLE	
	▽=0	3 PLACES ± --- ± ---	CHECKED BY DATE	[blank] [blank]	MX150 RECEPTACLE DUAL ROW BACKSHELL	
▽=0	2 PLACES ± 0.1 ± ---	APPROVED BY DATE	WKOSHY 2013/04/08	DOCUMENT NO.		SHEET NO. 2 OF 3
▽=0	1 PLACE ± 0.3 ± ---	MATERIAL NO.	SEE BOM	SD-34951-0001		
▽=0	0 PLACE ± --- ± ---	ANGULAR ± 3 °	THIS DRAWING CONTAINS INFORMATION THAT IS PROPRIETARY TO MOLEX INCORPORATED AND SHOULD NOT BE USED WITHOUT WRITTEN PERMISSION			

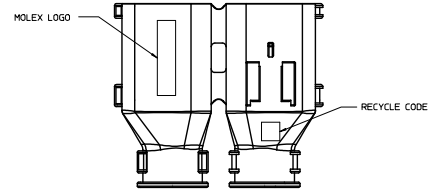
BACKSHELL DETAIL



Partial Z-Z
SCALE 5:1
WITH RIBS



Partial Y-Y
SCALE 5:1
WITHOUT RIBS



PART NUMBER	DIMENSIONS				
	A	B	C	D	E
34951-0610	50	13.2	9.3	3.5	0.65
34951-0620	50	13.2	N/A	N/A	N/A
34951-0640	50	17.7	19.6	3.5	0.83
34951-0660	50	17.7	N/A	N/A	N/A

ENTER DESCRIPTION EC NO. VAL2005-1693 DRAWING NUMBER: 2013/05/11 CHKD: [blank] APPR: [blank] REV: [blank]	QUALITY SYMBOLS ∇=0 ∇=0 ∇=0	GENERAL TOLERANCES (UNLESS SPECIFIED) mm INCH 4 PLACES ± --- ± --- 3 PLACES ± --- ± --- 2 PLACES ± 0.1 ± --- 1 PLACE ± 0.3 ± --- 0 PLACE ± --- ± --- ANGULAR ± 3 °	DIMENSION STYLE MM ONLY DRAWN BY: DAHAL DATE: 2013/03/27 CHECKED BY: [blank] DATE: [blank] APPROVED BY: WKOSHY DATE: 2013/04/08	SCALE 2:1 DESIGN UNITS METRIC THIRD ANGLE PROJECTION	TITLE MX150 RECEPTACLE DUAL ROW BACKSHELL molex	MATERIAL NO. SEE BOM DOCUMENT NO. SD-34951-0001	SHEET NO. 3 OF 3
	DRAFT WHERE APPLICABLE MUST REMAIN WITHIN DIMENSIONS						
	SIZE D THIS DRAWING CONTAINS INFORMATION THAT IS PROPRIETARY TO MOLEX INCORPORATED AND SHOULD NOT BE USED WITHOUT WRITTEN PERMISSION						
	[blank]						