

Excellent Integrated System Limited

Stocking Distributor

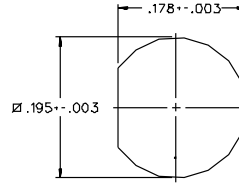
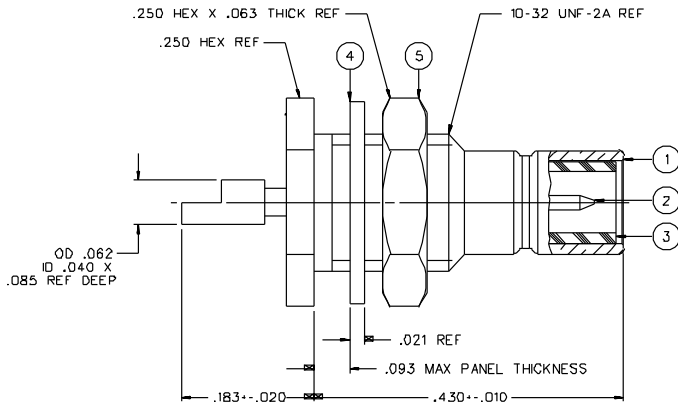
Click to view price, real time Inventory, Delivery & Lifecycle Information:

[Bel Fuse Inc.](#)
[131-3701-406](#)

For any questions, you can email us directly:
sales@integrated-circuit.com

PART NUMBER	ITEM ①	ITEM ②	ITEM ③	ITEM ④	ITEM ⑤
131-3701-401	BRASS BODY GOLD PL .00001 MIN OVER NICKEL PL .00005 MIN OVER COPPER PL .00005 MIN	BRASS CONTACT GOLD PL .00003 MIN OVER NICKEL PL .00005 MIN OVER COPPER PL .00005 MIN	TEFLON INSULATOR	PHOSPHOR BRONZE WASHER GOLD PL .00001 MIN OVER NICKEL PL .00005 MIN OVER COPPER PL .00005 MIN	BRASS NUT GOLD PL .00001 MIN OVER NICKEL PL .00005 MIN OVER COPPER PL .00005 MIN
131-3701-406	BRASS BODY NICKEL PL .0001 MIN OVER COPPER PL .00005 MIN	BRASS CONTACT GOLD PL .00003 MIN OVER NICKEL PL .00005 MIN OVER COPPER PL .00005 MIN	TEFLON INSULATOR	PHOSPHOR BRONZE WASHER NICKEL PL .0001 MIN OVER COPPER PL .00005 MIN	BRASS NUT NICKEL PL .0001 MIN OVER COPPER PL .00005 MIN

DRAWING NO.	
C	131-3701-401/410
REVISIONS	
0	CHANGED: REVISED AND REDRAWN. WAS "C" SIZE, DATED 5-13-86.
03	04-04-88 EJ RRR/RJB 5-18-88 ECO 23411 CHANGED: RF HIGH POT 4 AND 7 MHZ WAS 5 MHZ UPDATED TO CURRENT STANDARDS
36	4-5-94 R H R P 4-7-94 H H H H ECN #2411
VERSION UPDATE	
4	1-31-95 R H H H 2-1-95 H H H H ECN 43039
VERSION UPDATE	
46	1-13-99 R H H H ECN 46080



MOUNTING HOLE

NOTES:

1. SPECIFICATIONS:

- IMPEDANCE: 50 OHMS
- FREQUENCY RANGE: 0-4 GHz
- VSWR: NOT APPLICABLE
- WORKING VOLTAGE: 335 VRMS MAX AT SEA LEVEL
- DIELECTRIC WITHSTANDING VOLTAGE: 1000 VRMS MIN AT SEA LEVEL
- INSULATION RESISTANCE: 1000 MEGOHM MIN
- CONTACT RESISTANCE:
 - CENTER CONTACT - INITIAL 6 MILLIOHM MAX, AFTER ENVIRONMENTAL 8 MILLIOHM MAX
 - OUTER CONDUCTOR - GOLD PLATED INITIAL 1 MILLIOHM MAX, AFTER ENVIRONMENTAL 1.5 MILLIOHM MAX
 - NICKEL PLATED INITIAL 2.5 MILLIOHM MAX, AFTER ENVIRONMENTAL 3.5 MILLIOHM MAX
- BRAID TO BODY - NOT APPLICABLE
- CORONA LEVEL: NOT APPLICABLE
- INSERTION LOSS: NOT APPLICABLE
- RF LEAKAGE: NOT APPLICABLE
- RF HIGH POTENTIAL WITHSTANDING VOLTAGE: 600 VRMS AT 4 AND 7 MHZ
- MECHANICAL:
 - ENGAGE/DISENGAGE FORCE: INITIAL 14 LBS MAX AFTER DURABILITY 14 LBS MAX
 - ENGAGEMENT, 2 LBS MIN DISENGAGEMENT
 - MATING TORQUE: NOT APPLICABLE
 - COUPLING PROOF TORQUE: NOT APPLICABLE
 - COUPLING NUT RETENTION: NOT APPLICABLE
 - CONTACT RETENTION: 4 LBS MIN AXIAL FORCE
 - CABLE ACCEPTABILITY: NOT APPLICABLE
 - CABLE HEX CRIMP SIZE: NOT APPLICABLE
 - CABLE RETENTION: NOT APPLICABLE
 - DURABILITY: 500 CYCLES MIN
- ENVIRONMENTAL:
 - (MEETS OR EXCEEDS THE APPLICABLE PARAGRAPH OF MIL-C-39012)
 - THERMAL SHOCK: MIL-STD-202, METHOD 107, CONDITION B
 - OPERATING TEMPERATURE: -65 DEG C TO 165 DEG C
 - CORROSION: MIL-STD-202, METHOD 101, CONDITION B
 - SHOCK: MIL-STD-202, METHOD 213, CONDITION B
 - VIBRATION: MIL-STD-202, METHOD 204, CONDITION B

CUSTOMER DRAWING

THIS DRAWING TO BE INTERPRETED PER ANSI Y 14.5M - 1982

"μSTATION"

COMPANY CONFIDENTIAL

TOLERANCE UNLESS OTHERWISE SPECIFIED	DRAWN BY EJ	DATE 8-14-87	 <small>Circuit Connectivity Solutions 299 Johnson Ave. Ste. 100 Waukegan, IL 60087 1-800-247-8226</small>
DECIMALS .XX	CHECKED BY	DATE	
.XXX	APPROVED BY RRF	DATE 5-16-88	TITLE JACK ASSEMBLY REAR MOUNT BULKHEAD SMB
NATL	APPROVED BY RJB	DATE 5-16-88	CODE NO.
FINSH	RELEASE DATE 5-18-88		DRAWING NO. C-131-3701-401/410
			SCALE 10:1 U/N INCH SHEET 2 OF 2