

Excellent Integrated System Limited

Stocking Distributor

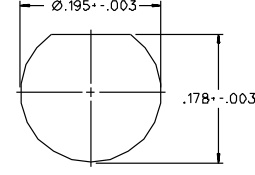
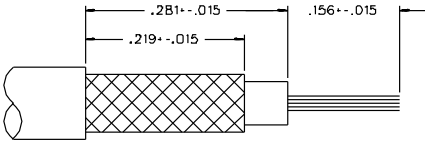
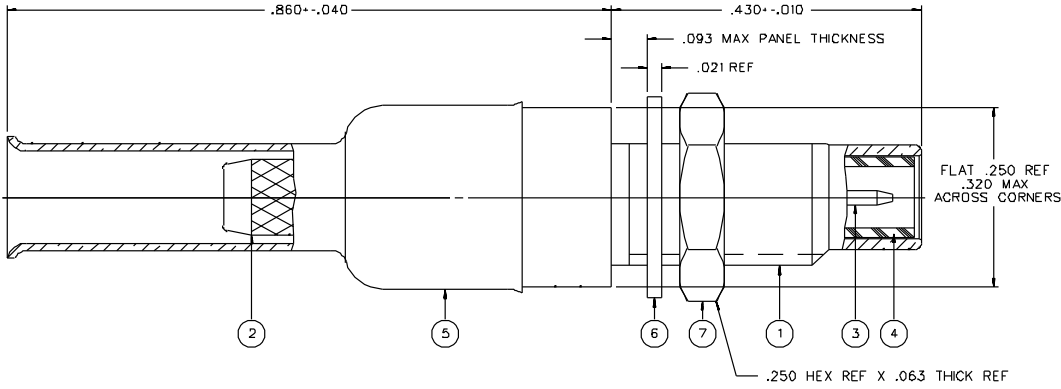
Click to view price, real time Inventory, Delivery & Lifecycle Information:

[Bel Fuse Inc.](#)
[131-6303-401](#)

For any questions, you can email us directly:
sales@integrated-circuit.com

PART NUMBER	ITEM ① BODY - FRONT	ITEM ② BODY - REAR	ITEM ③ CONTACT	ITEM ④ INSULATOR	ITEM ⑤ CRIMP SLEEVE	ITEM ⑥ LOCK WASHER	ITEM ⑦ NUT
131-6303-401	BRASS GOLD PL .00001 MIN OVER NICKEL PL .00005 MIN OVER COPPER PL .00005 MIN	BRASS GOLD PL .00001 MIN OVER NICKEL PL .00005 MIN OVER COPPER PL .00005 MIN	BRASS GOLD PL .00003 MIN OVER NICKEL PL .00005 MIN OVER COPPER PL .00005 MIN	TEFLON	COPPER GOLD PL .00001 MIN OVER NICKEL PL .00005 MIN OVER COPPER PL .00005 MIN	PHOSPHOR BRONZE GOLD PL .00001 MIN OVER NICKEL PL .00005 MIN OVER COPPER PL .00005 MIN	BRASS GOLD PL .00001 MIN OVER NICKEL PL .00005 MIN OVER COPPER PL .00005 MIN
131-6303-406	BRASS NICKEL PL .0001 MIN OVER COPPER PL .00005 MIN	BRASS NICKEL PL .0001 MIN OVER COPPER PL .00005 MIN	BRASS GOLD PL .00003 MIN OVER NICKEL PL .00005 MIN OVER COPPER PL .00005 MIN	TEFLON	COPPER NICKEL PL .0001 MIN OVER COPPER PL .00005 MIN	PHOSPHOR BRONZE NICKEL PL .0001 MIN OVER COPPER PL .00005 MIN	BRASS NICKEL PL .0001 MIN OVER COPPER PL .00005 MIN

DRAWING NO. C - 131-6303-401/410			
REVISIONS			
01	07-27-89	EJ	B-1-89
ENGINEERING RELEASE			
CHANGED: RF LEAK 2.5 GHz WAS 2 TO 3 GHz RF HIGH POT 4 AND 7 MHz WAS 5 MHz			
REVISION NUMBER FOLLOWED BY AN ALPHA * CHARACTER INDICATES DRAWING CHANGE * INDICATED BY PART NUMBER ADDITION ONLY			
1a	3-11-98	RJ	ECN 44921
DELETED INTERFACE DETAIL PER MIL-C-39012			
1b	11-15-01	RJ	ECN 48089



NOTES:

1. SPECIFICATIONS:

IMPEDANCE: 50 OHMS
FREQUENCY RANGE: 0-10 GHZ
VSWR: 1.20 + .05 F (F IN GHZ)
WORKING VOLTAGE: 335 VRMS MAX AT SEA LEVEL
DIELECTRIC WITHSTANDING VOLTAGE: 1000 VRMS MIN AT SEA LEVEL
INSULATION RESISTANCE: 1000 MEGOHM MIN
CONTACT RESISTANCE:
CENTER CONTACT - INITIAL 6 MILLIOHM MAX, AFTER ENVIRONMENTAL 8 MILLIOHM MAX
OUTER CONDUCTOR - GOLD PLATED INITIAL 1 MILLIOHM MAX, AFTER ENVIRONMENTAL - NOT APPLICABLE
NICKEL PLATED INITIAL 2.5 MILLIOHM MAX, AFTER ENVIRONMENTAL - NOT APPLICABLE
BRAID TO BODY - INITIAL 1 MILLIOHM MAX, AFTER ENVIRONMENTAL NOT APPLICABLE
CORONA LEVEL: 250 VOLTS MIN AT 70,000 FEET
INSERTION LOSS: .25 DB MAX AT 4 GHZ
RF LEAKAGE: -60 DB MIN AT 2.5 GHZ
RF HIGH POTENTIAL WITHSTANDING VOLTAGE: 700 VRMS AT 4 AND 7 MHZ

MECHANICAL:
ENGAGE/DISENGAGE FORCE: 16 OUNCE-INCH MAX TORQUE
MATING TORQUE: 35-50 OUNCE INCH
COUPLING PROOF TORQUE: 100 OUNCE-INCH MIN
COUPLING NUT RETENTION: 35 LBS MIN
CONTACT RETENTION: 4 LBS MIN AXIAL FORCE
CABLE ACCEPTABILITY: RC188/U, RC188A/U, RC316/U, RC179A/U, RC179B/U, RC174/U, RC161/U, RC187/U, RC187A/U

CABLE HEX CRIMP SIZE: .128
CABLE RETENTION: 20 LBS MIN OR CABLE BREAKING STRENGTH
DURABILITY: 500 CYCLES MIN

ENVIRONMENTAL:
(MEETS OR EXCEEDS THE APPLICABLE PARAGRAPH OF MIL-C-39012)
THERMAL SHOCK: MIL-STD-202, METHOD 107, CONDITION B
OPERATING TEMPERATURE: -65 DEG C TO 165 DEG C
CORROSION: MIL-STD-202, METHOD 101, CONDITION B
SHOCK: MIL-STD-202, METHOD 213, CONDITION C
VIBRATION: MIL-STD-202, METHOD 204, CONDITION D

CUSTOMER DRAWING

THIS DRAWING TO BE INTERPRETED PER ANSY 14.5M - 1982

" μ STATION"

COMPANY CONFIDENTIAL

TOLERANCE UNLESS OTHERWISE SPECIFIED	DRAWN BY EJ	DATE 5-17-88	JOHNSON	<small>Global Connectivity Solutions 299 Johnson Ave, Ste 100 Warren, MI 48090 1-800-247-8216</small>
DECIMALS: .XX	CHECKED BY	DATE	TITLE: JACK ASSEMBLY STRAIGHT CABLED BULKHEAD SMC, RG 188	
MATH	APPROVED BY LCS	DATE 7-27-89	CODE NO.	DRAWING NO. C - 131-6303-401/410
FINISH	APPROVED BY RJB	DATE 7-27-89	SCALE 10:1	U/M INCH SHEET 2 OF 2
RELEASE DATE 8-1-89				