

Excellent Integrated System Limited

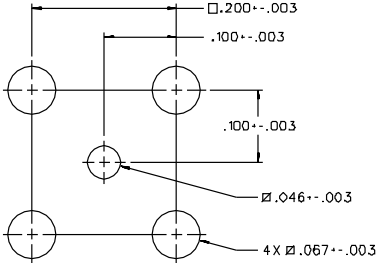
Stocking Distributor

Click to view price, real time Inventory, Delivery & Lifecycle Information:

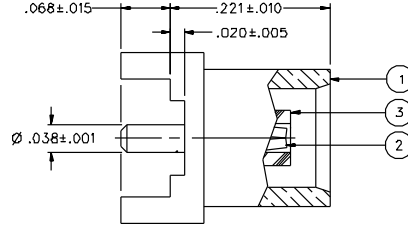
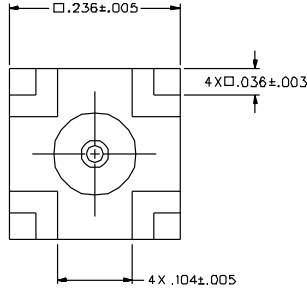
[Bel Fuse Inc.](#)
[133-3701-221](#)

For any questions, you can email us directly:
sales@integrated-circuit.com

PART NUMBER	ITEM ①	ITEM ②	ITEM ③
133-3701-221	BODY BRASS GOLD PL .00001 MIN OVER NICKEL PL .00005 MIN OVER COPPER PL .00005 MIN	CONTACT BERYLLIUM COPPER GOLD PL .00003 MIN OVER NICKEL PL .00005 MIN OVER COPPER PL .00005 MIN	INSULATOR TEFLON
133-3701-22B	BODY BRASS NICKEL PL .0001 MIN OVER COPPER PL .00005 MIN	CONTACT BERYLLIUM COPPER GOLD PL .00003 MIN OVER NICKEL PL .00005 MIN OVER COPPER PL .00005 MIN	INSULATOR TEFLON



MOUNTING HOLE LAYOUT



NOTES:

1. SPECIFICATIONS:

- IMPEDANCE: 50 OHMS
- FREQUENCY RANGE: 0-6 GHz
- VSWR: NOT APPLICABLE
- WORKING VOLTAGE: 335 VRMS MAX AT SEA LEVEL
- DIELECTRIC WITHSTANDING VOLTAGE: 1000 VRMS MIN AT SEA LEVEL
- INSULATION RESISTANCE: 10000 MEGOHM MIN
- CONTACT RESISTANCE:
 - CENTER CONTACT - INITIAL 5 MILLIOHM MAX, AFTER ENVIRONMENTAL 8 MILLIOHM MAX
 - OUTER CONDUCTOR - GOLD PLATED INITIAL 1 MILLIOHM MAX, AFTER ENVIRONMENTAL 1.5 MILLIOHM MAX
 - NICKEL PLATED INITIAL 2.5 MILLIOHM MAX, AFTER ENVIRONMENTAL 3.5 MILLIOHM MAX
- BRAID TO BODY - NOT APPLICABLE
- CORONA LEVEL: 250 VOLTS MINIMUM AT 70,000 FEET
- INSERTION LOSS: NOT APPLICABLE
- RF LEAKAGE: NOT APPLICABLE
- RF HIGH POTENTIAL WITHSTANDING VOLTAGE: 600 VRMS AT 4 AND 7 MHZ
- MECHANICAL:
 - ENGAGE/DISENGAGE FORCE: 5.6 LBS MAX ENGAGEMENT
 - 1.0 LB MIN DISENGAGEMENT
 - 8.0 LBS MAX DISENGAGEMENT
 - CONTACT RETENTION FORCE: 2.3 LBS MIN
 - CONTACT RETENTION TORQUE: NOT APPLICABLE
 - COUPLING MECHANISM RETENTION: NOT APPLICABLE
 - CABLE ACCEPTABILITY: NOT APPLICABLE
 - CABLE HEX CRIMP SIZE: NOT APPLICABLE
 - CABLE RETENTION: NOT APPLICABLE
 - DURABILITY: 500 CYCLES MIN
- ENVIRONMENTAL:
 - MEETS OR EXCEEDS THE APPLICABLE PARAGRAPH OF MIL-C-38012)
 - THERMAL SHOCK: MIL-STD-202, METHOD 107, CONDITION F
 - OPERATING TEMPERATURE: -65 DEG C TO 185 DEG C
 - CORROSION: MIL-STD-202, METHOD 101, CONDITION B
 - SHOCK: MIL-STD-202, METHOD 213, CONDITION B
 - VIBRATION: MIL-STD-202, METHOD 204, CONDITION B
 - MOISTURE RESISTANCE: MIL-STD-202, METHOD 106

DRAWING NO. C - 133-3701-221/230	
0 REVISIONS	
ENGINEERING RELEASE	
1	4-11-95 R J B E J EGN 43017
CONTACT RETENTION 2.3 LBS MIN WAS 4.0 MAX ENGAGE 5.6 LBS WAS 3.4 DISENGAGE 1.0 / 8.0 LBS WAS 5.0 LBS TYPICAL DELETED INTERFACE PER CECC 22220 DETAIL	
* REVISION NUMBER FOLLOWED BY AN ALPHA * * CHANGING INDICATES DRAWING CHANGE * * CATION OR PART NUMBER ADDITION ONLY *	
10	12-19-00 J B E J EGN 47522

CUSTOMER DRAWING
 THIS DRAWING TO BE INTERPRETED
 PER ANSI Y 14.5M - 1982
 "μSTATION"
 COMPANY CONFIDENTIAL

TOLERANCE UNLESS OTHERWISE SPECIFIED	DRAWN BY SWC	DATE 7-29-94	 <small>Cinch Connectivity Solutions 299 Johnson Ave. Ste. 100 Worcester, MA 01603 1-800-247-8256</small>
DECIMALS: .XX	CHECKED BY SWC	DATE 4-12-95	
MATERIAL	APPROVED BY TAK	DATE 4-20-95	TITLE JACK ASSEMBLY STRAIGHT PC MOUNT MCX
FINISH	APPROVED BY RJB	DATE 4-21-95	CODE NO. DRAWING NO. C - 133-3701-221/230
	RELEASE DATE		SCALE 10:1 U/N INCH SHEET 2 OF 2