

Excellent Integrated System Limited

Stocking Distributor

Click to view price, real time Inventory, Delivery & Lifecycle Information:

[Semtech](#)
[UCLAMP1211T.TCT](#)

For any questions, you can email us directly:

sales@integrated-circuit.com



uClamp1211T
Low Profile μClamp™
1-Line ESD protection

PROTECTION PRODUCTS - MicroClamp™

Description

The μClamp™ series of TVS arrays are designed to protect sensitive electronics from damage or latch-up due to ESD. It is designed to replace multilayer varistors (MLVs) in portable applications such as cell phones, notebook computers, and other portable electronics. It features large cross-sectional area junctions for conducting high transient currents. They offer desirable characteristics for board level protection including fast response time, low operating and clamping voltage, and no device degradation.

The μClamp™1211T is in a 2-pin, RoHS/WEEE compliant, SLP1006P2T package. It measures 1.0 x 0.6 mm with a nominal height of only 0.4mm. The leads are spaced at a pitch of 0.65mm and are finished with lead-free NiPdAu. Each device will protect one line operating at 12 volts. It gives the designer the flexibility to protect single lines in applications where arrays are not practical. They may be used to meet the ESD immunity requirements of IEC 61000-4-2, Level 4 (±15kV air, ±8kV contact discharge). The combination of small size and high ESD surge capability makes them ideal for use in portable applications such as cellular phones, digital cameras, and MP3 players.

Features

- ◆ Transient protection for data lines to **IEC 61000-4-2 (ESD) ±15kV (air), ±8kV (contact) IEC 61000-4-4 (EFT) 40A (tp = 5/50ns) Cable Discharge Event (CDE)**
- ◆ Ultra-small package (1.0 x 0.6 x 0.4mm)
- ◆ Protects one data or power line
- ◆ Low reverse current: <1nA typical (VR=12V)
- ◆ Working voltage: - 12V / +12V
- ◆ Low capacitance: 3pF typical
- ◆ Solid-state silicon-avalanche technology

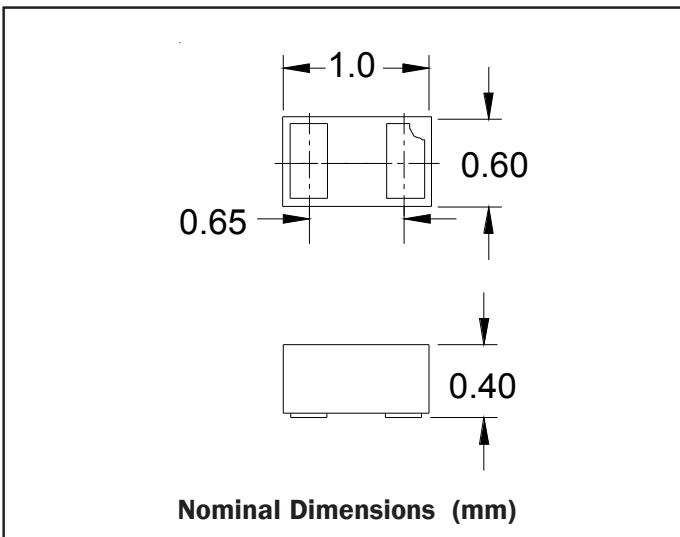
Mechanical Characteristics

- ◆ SLP1006P2T package
- ◆ RoHS/WEEE Compliant
- ◆ Nominal Dimensions: 1.0 x 0.6 x 0.4 mm
- ◆ Lead Finish: NiPdAu
- ◆ Molding compound flammability rating: UL 94V-0
- ◆ Marking : Marking code, cathode band
- ◆ Packaging : Tape and Reel

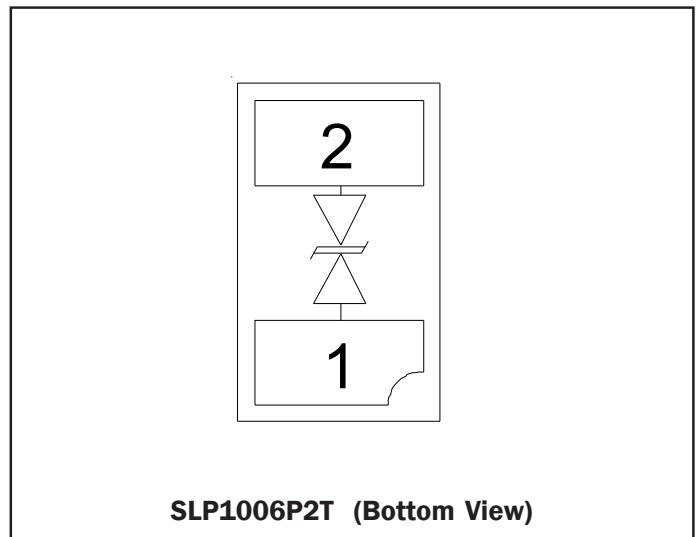
Applications

- ◆ Cellular Handsets & Accessories
- ◆ FM Antennas
- ◆ RFID
- ◆ Keypads, Side Keys, LCD Displays
- ◆ Battery, Power Lines
- ◆ Notebooks & Desktop Computers
- ◆ Portable Instrumentation

Dimensions



Schematic & PIN Configuration



PROTECTION PRODUCTS

Absolute Maximum Rating

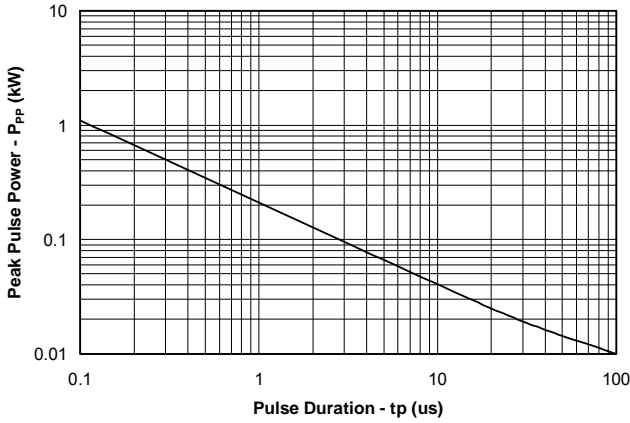
| Rating | Symbol | Value | Units |
|--|-----------|------------------|-------|
| ESD per IEC 61000-4-2 (Air) ESD per IEC 61000-4-2 (Contact) | V_{ESD} | +/- 18 +/- 12 | kV |
| Operating Temperature | T_J | -55 to +125 | °C |
| Storage Temperature | T_{STG} | -55 to +150 | °C |

Electrical Characteristics (T=25°C)

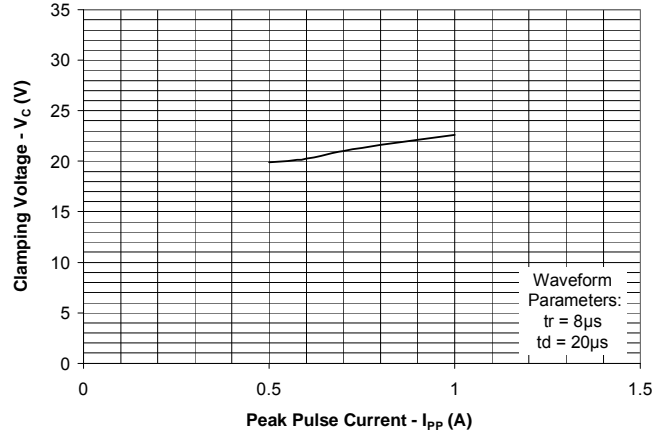
| Parameter | Symbol | Conditions | Minimum | Typical | Maximum | Units |
|---------------------------|-----------|---|---------|---------|---------|-------|
| Reverse Stand-Off Voltage | V_{RWM} | Pin 1 to 2 or 2 to 1 | | | 12 | V |
| Reverse Breakdown Voltage | V_{BR} | $I_t = 1mA$ Pin 1 to 2 or 2 to 1 | 13.3 | 16 | 19 | V |
| Reverse Leakage Current | I_R | $V_{RWM} = 12V, T=25°C$ Pin 1 to 2 or 2 to 1 | | <1 | 50 | nA |
| Clamping Voltage | V_C | $I_{PP} = 1A, tp = 8/20\mu s$ Pin 1 to 2 or 2 to 1 | | | 27 | V |
| Junction Capacitance | C_J | $V_R = 0V, f = 1MHz$ | | 3 | 7 | pF |

PROTECTION PRODUCTS

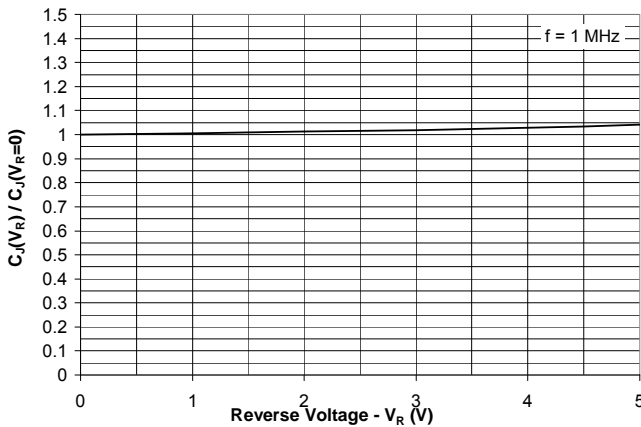
Non-Repetitive Peak Pulse Power vs. Pulse Time



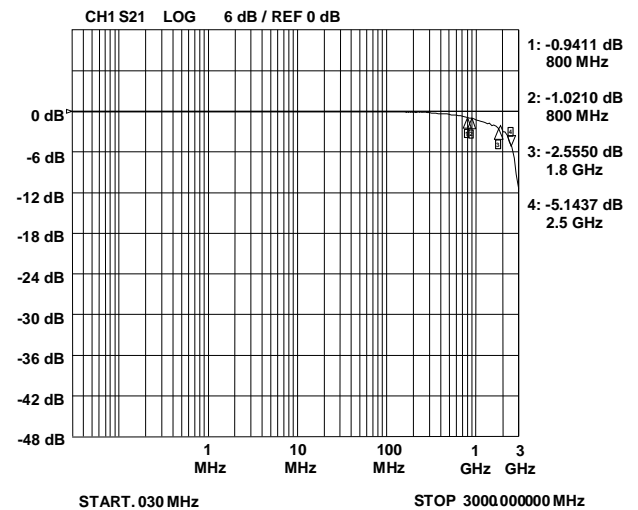
Clamping Voltage vs. Peak Pulse Current



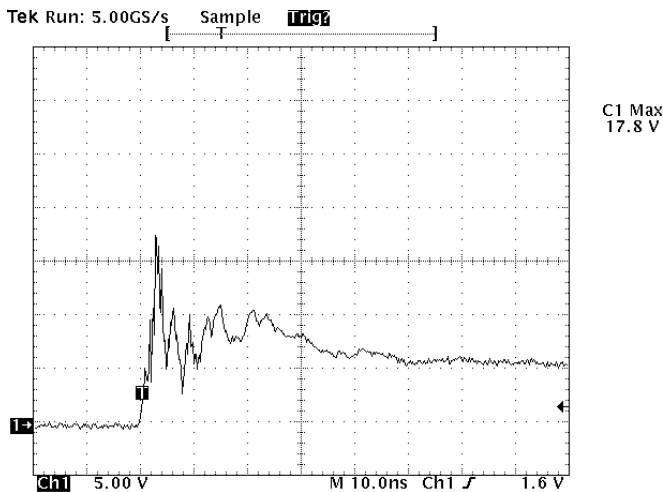
Normalized Junction Capacitance vs. Reverse Voltage



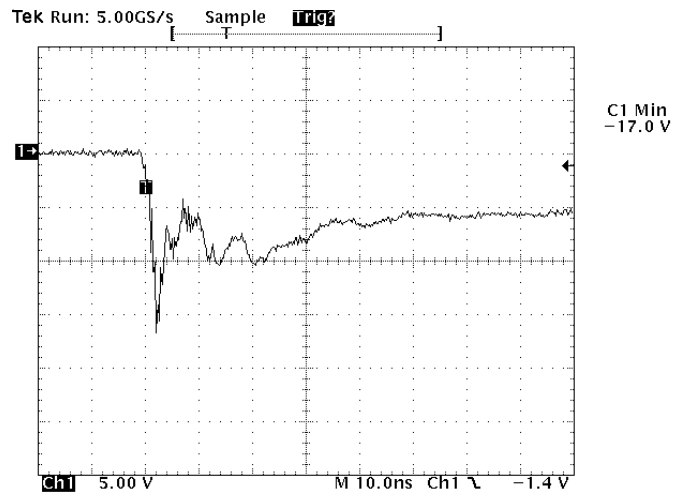
Typical Insertion Loss (S21)



**ESD Clamping (Pin 1 to 2 and 2 to 1)
(8kV Contact per IEC 61000-4-2)**



**ESD Clamping (Pin 1 to 2 and 2 to 1)
(-8kV Contact per IEC 61000-4-2)**



Note: Data is taken with a 10x attenuator

Note: Data is taken with a 10x attenuator

PROTECTION PRODUCTS

Applications Information

Device Connection Options

These TVS diodes are designed to protect one data, I/O, or power supply line. The device is bidirectional and may be used on lines where the signal polarity can go above and below ground.

Circuit Board Layout Recommendations for Suppression of ESD.

Good circuit board layout is critical for the suppression of ESD induced transients. The following guidelines are recommended:

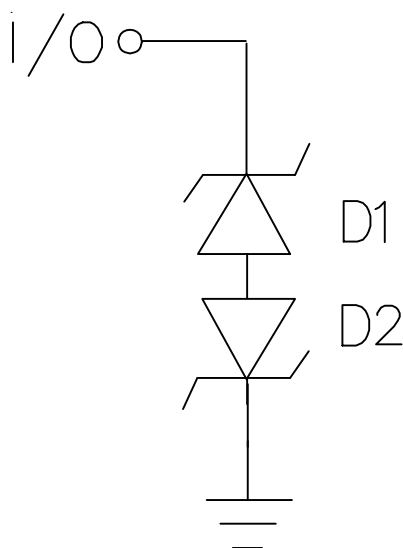
- Place the TVS near the input terminals or connectors to restrict transient coupling.
- Minimize the path length between the TVS and the protected line.
- Minimize all conductive loops including power and ground loops.
- The ESD transient return path to ground should be kept as short as possible.
- Never run critical signals near board edges.
- Use ground planes whenever possible.

Circuit Diagram



PROTECTION PRODUCTS

Applications Information - Spice Model

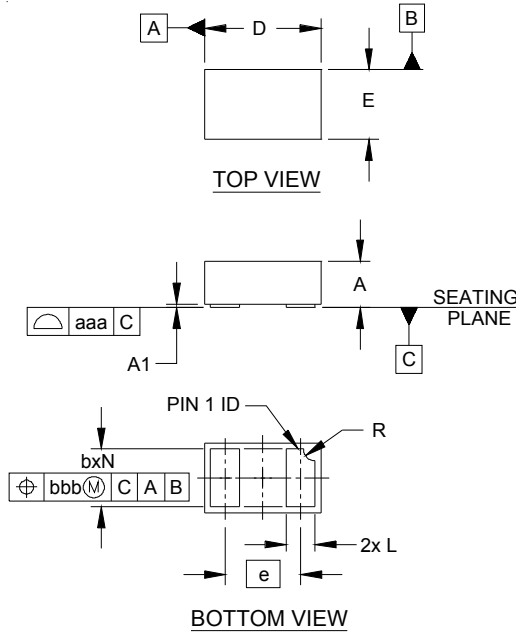


Spice Model

| uClamp1211T Spice Parameters | | | |
|-------------------------------------|-------------|-----------------|-----------------|
| Parameter | Unit | D1 (TVS) | D2 (TVS) |
| IS | Amp | 2.21E-14 | 2.21E-14 |
| BV | Volt | 16.4 | 16.4 |
| VJ | Volt | 0.7 | 0.7 |
| RS | Ohm | 2.7 | 2.7 |
| IBV | Amp | 1E-3 | 1E-3 |
| CJO | Farad | 6E-12 | 6E-12 |
| TT | sec | 2.541E-9 | 2.541E-9 |
| M | - | 0.06 | 0.06 |
| N | - | 1.1 | 1.1 |
| EG | eV | 1.11 | 1.11 |

PROTECTION PRODUCTS

Outline Drawing - SLP1006P2T

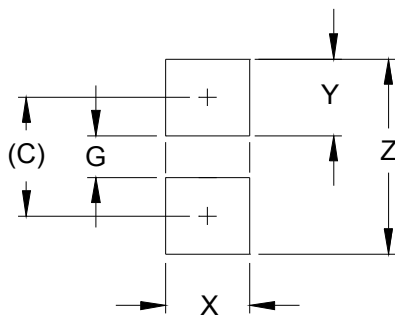


| DIM | DIMENSIONS | | | | | |
|-----|------------|------|------|-------------|------|------|
| | INCHES | | | MILLIMETERS | | |
| | MIN | NOM | MAX | MIN | NOM | MAX |
| A | .015 | .016 | .017 | 0.37 | 0.40 | 0.43 |
| A1 | .000 | .001 | .002 | 0.00 | 0.03 | 0.05 |
| b | .018 | .020 | .022 | 0.45 | 0.50 | 0.55 |
| D | .035 | .039 | .043 | 0.90 | 1.00 | 1.10 |
| E | .020 | .024 | .028 | 0.50 | 0.60 | 0.70 |
| e | .026 BSC | | | 0.65 BSC | | |
| L | .008 | .010 | .012 | 0.20 | 0.25 | 0.30 |
| R | .002 | .004 | .006 | 0.05 | 0.10 | 0.15 |
| N | 2 | | | 2 | | |
| aaa | .003 | | | 0.08 | | |
| bbb | .004 | | | 0.10 | | |

NOTES:

1. CONTROLLING DIMENSIONS ARE IN MILLIMETERS (ANGLES IN DEGREES).

Land Pattern - SLP1006P2T



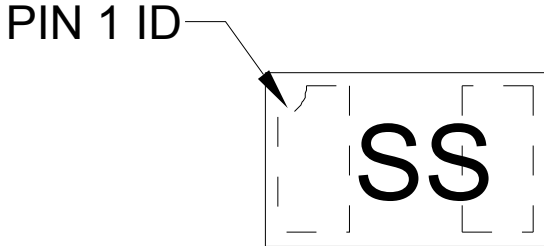
| DIM | DIMENSIONS | |
|-----|------------|-------------|
| | INCHES | MILLIMETERS |
| C | (.033) | (0.85) |
| G | .012 | 0.30 |
| X | .024 | 0.60 |
| Y | .022 | 0.55 |
| Z | .055 | 1.40 |

NOTES:

1. CONTROLLING DIMENSIONS ARE IN MILLIMETERS (ANGLES IN DEGREES).
2. THIS LAND PATTERN IS FOR REFERENCE PURPOSES ONLY.
 CONSULT YOUR MANUFACTURING GROUP TO ENSURE YOUR COMPANY'S MANUFACTURING GUIDELINES ARE MET.

PROTECTION PRODUCTS

Marking Code



Ordering Information

| Part Number | Working Voltage | Qty per Reel | Reel Size |
|-----------------|-----------------|--------------|-----------|
| uClamp1211T.TCT | 12V | 3,000 | 7 Inch |

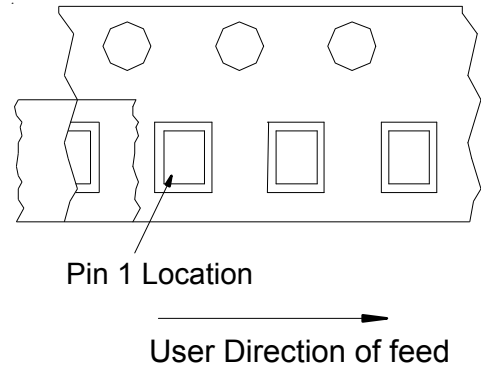
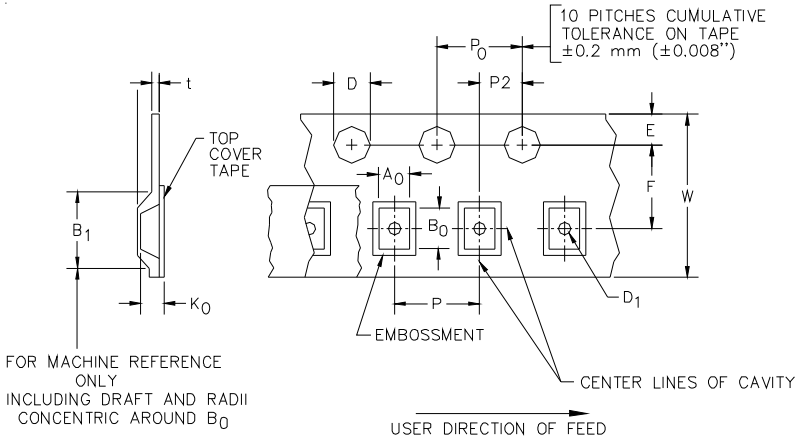
Notes:

- 1) This is a lead-free, RoHS/WEEE compliant product
- MicroClamp, uClamp and μClamp are marks of Semtech Corporation

Notes:

- 1) Device is electrically symmetrical

Tape and Reel Specification



Device Orientation in Tape

| A0 | B0 | K0 |
|-----------------|-----------------|-----------------|
| 0.69 +/-0.10 mm | 1.19 +/-0.10 mm | 0.66 +/-0.10 mm |

| Tape Width | B, (Max) | D | D1 | E | F | P | P0 | P2 | T | W |
|------------|---------------|---|---------------------|--------------------------|-------------------------|-------------------------|------------------------|-------------------------|----------------------|--------------------------------------|
| 8 mm | 4.2 mm (.165) | 1.5 + 0.1 mm - 0.0 mm (0.59 +.005 - .000) | 0.4 mm ±0.25 (.031) | 1.750±.10 mm (.069±.004) | 3.5±0.05 mm (.138±.002) | 4.0±0.10 mm (.157±.004) | 4.0±0.1 mm (.157±.004) | 2.0±0.05 mm (.079±.002) | 0.254±0.02 mm (.016) | 8.0 mm + 0.3 mm - 0.1 mm (.312±.012) |

Contact Information

Semtech Corporation
 Protection Products Division
 200 Flynn Rd., Camarillo, CA 93012
 Phone: (805)498-2111 FAX (805)498-3804