

## Excellent Integrated System Limited

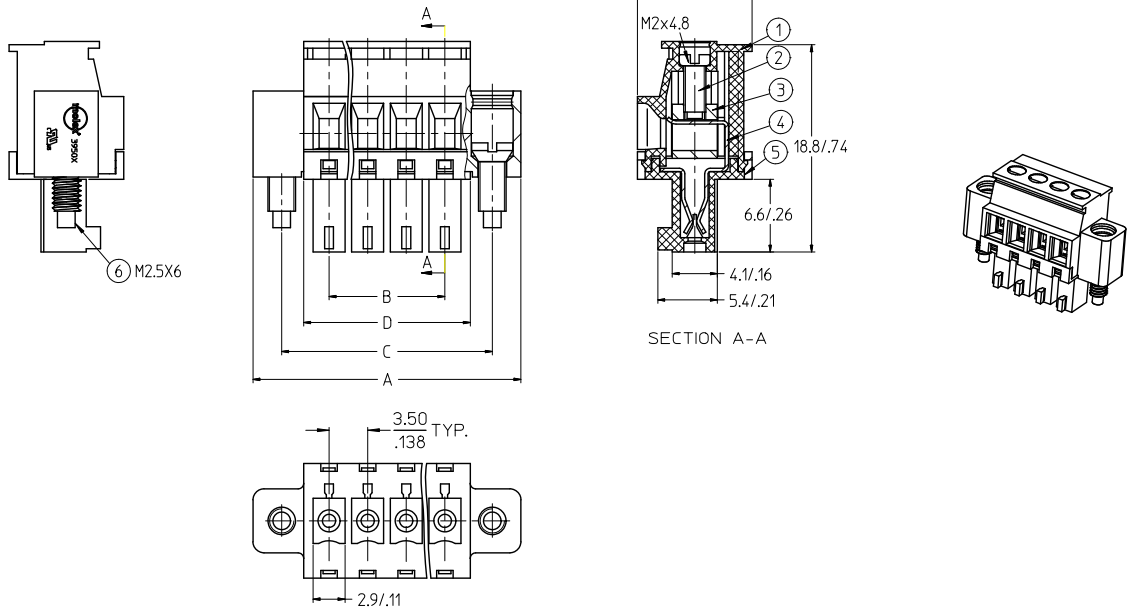
Stocking Distributor

Click to view price, real time Inventory, Delivery & Lifecycle Information:

[Molex Connector Corporation](#)  
[0395078005](#)

For any questions, you can email us directly:  
[sales@integrated-circuit.com](mailto:sales@integrated-circuit.com)

10 9 8 7 6 5 4 3 2 39507



SPECIFICATIONS:

1. MATERIAL:

- (1). BODY: NYLON 66 (PA 66).
- (2). SCREW: STEEL.
- (3). CAGE (\*): BRASS
- (4). TERMINAL: PHOSPHOR BRONZE (C)
- (5). COVER: NYLON 66 (PA 66).
- (6). SCREW: STEEL

(C) 2. PRODUCT SPECIFICATION: PS-39500-001.

3. WIRE RANGE: 30 - 16AWG.

4. TORQUE: 2 in-lbs.

5. WIRE STRIP LENGTH: 6.50/256.

6. NUMBER OF CIRCUIT POSITIONS AVAILABLE = 2 THROUGH 20.

(C) 7. ASSEMBLY IS ROHS COMPLIANT BY EXEMPTION. COMPONENTS MARKED WITH AN ASTERISK (\*) ARE ROHS COMPLIANT BY EXEMPTION, ALL OTHERS ARE ROHS COMPLIANT.

|  |  |                               |                                       |            |  |   |            |   |                        |  |  |
|--|--|-------------------------------|---------------------------------------|------------|--|---|------------|---|------------------------|--|--|
| <b>FIX TYPO-TERM MATERIAL</b><br>EC NO: WNA2010-0708<br>DRAWN BY: CHENGLIYU<br>CHECKED BY: CHENGLIYU<br>APPROVED BY: APPRETTIUS      | 2010/06/29<br>2006/03/17<br>2010/07/09 | QUALITY SYMBOLS<br>▽=0<br>▽=0 | GENERAL TOLERANCES (UNLESS SPECIFIED) |            | DIMENSION STYLE                          |   | SCALE      | DESIGN UNITS  | THIRD ANGLE PROJECTION |  |  |
|  |  |                               |                                       | mm         | INCH                                     | MM/IN   |            | 3:1   | INCH                   |  |  |
|  |  |                               | 4 PLACES                              | ± .005     | ± .0005                                  | DRAWN BY  | DATE       | TITLE<br>3.50MM, EURO PLUG,<br>VERTICAL, FRONT WIRE<br>ENTRY, MOUNTING ENDS |                        |  |  |
|  |  |                               | 3 PLACES                              | ± .013     | ± .01                                    | EHILE   | 2006/03/17 |   |                        |  |  |
| 2 PLACES   | ± 0.3                                  | ± .005                        | CHECKED BY                            | DATE       | MOLEX INCORPORATED<br>MOLEX INCORPORATED |   |            |   |                        |  |  |
| 1 PLACE  | ± 0.3                                  | ± .005                        | EHILE                                 | 2006/03/17 |  |   |            |   |                        |  |  |
| ANGULAR ± 2 °  |  |                               | APPROVED BY                           |            | DATE                                     | MATERIAL NO. SEE CHART<br>DOCUMENT NO. SD-39507-001 |            |   |                        |  |  |
| DRAFT WHERE APPLICABLE MUST REMAIN WITHIN DIMENSIONS   |  |                               | RDEROSS                               |            | 2006/03/17                               | SHEET NO. 1 OF 2                                    |            |   |                        |  |  |
| SIZE B THIS DRAWING CONTAINS INFORMATION THAT IS PROPRIETARY TO MOLEX INCORPORATED AND SHOULD NOT BE USED WITHOUT WRITTEN PERMISSION |  |                               |                                       |            |  |   |            |   |                        |  |  |

9 8 7 6 5 4 3 2 1

10 9 8 7 6 5 4 3 2 39507

| Circuit size | Material Numbers |           |                  |            |                  |           |                  |           |                  |            |                  |           | Dimensional Information |      |       |      |       |      |       |      |
|--------------|------------------|-----------|------------------|------------|------------------|-----------|------------------|-----------|------------------|------------|------------------|-----------|-------------------------|------|-------|------|-------|------|-------|------|
|              | Black            |           |                  |            |                  |           | Green            |           |                  |            |                  |           | Dimensional Information |      |       |      |       |      |       |      |
|              | 100% Tin         |           |                  | 30 u" Gold |                  |           | 100% Tin         |           |                  | 30 u" Gold |                  |           | Dim. A                  |      | Dim B |      | Dim C |      | Dim D |      |
|              | Printing Options |           | Printing Options |            | Printing Options |           | Printing Options |           | Printing Options |            | Printing Options |           | mm                      | inch | mm    | inch | mm    | inch | mm    | inch |
| 2            | 395073002        | 395073302 | 395073402        | 395073502  | 395073802        | 395073902 | 395078002        | 395078302 | 395078402        | 395078502  | 395078802        | 395078902 | 17.3                    | .68  | 3.5   | .14  | 12.1  | .48  | 8.1   | .32  |
| 3            | 395073003        | 395073303 | 395073403        | 395073503  | 395073803        | 395073903 | 395078003        | 395078303 | 395078403        | 395078503  | 395078803        | 395078903 | 20.8                    | .82  | 7.0   | .28  | 15.6  | .61  | 11.6  | .46  |
| 4            | 395073004        | 395073304 | 395073404        | 395073504  | 395073804        | 395073904 | 395078004        | 395078304 | 395078404        | 395078504  | 395078804        | 395078904 | 24.3                    | .96  | 10.5  | .41  | 19.1  | .75  | 15.1  | .59  |
| 5            | 395073005        | 395073305 | 395073405        | 395073505  | 395073805        | 395073905 | 395078005        | 395078305 | 395078405        | 395078505  | 395078805        | 395078905 | 27.8                    | 1.09 | 14.0  | .55  | 22.6  | .89  | 18.6  | .73  |
| 6            | 395073006        | 395073306 | 395073406        | 395073506  | 395073806        | 395073906 | 395078006        | 395078306 | 395078406        | 395078506  | 395078806        | 395078906 | 31.3                    | 1.23 | 17.5  | .69  | 26.1  | 1.03 | 22.1  | .87  |
| 7            | 395073007        | 395073307 | 395073407        | 395073507  | 395073807        | 395073907 | 395078007        | 395078307 | 395078407        | 395078507  | 395078807        | 395078907 | 34.8                    | 1.37 | 21.0  | .83  | 29.6  | 1.17 | 25.6  | 1.01 |
| 8            | 395073008        | 395073308 | 395073408        | 395073508  | 395073808        | 395073908 | 395078008        | 395078308 | 395078408        | 395078508  | 395078808        | 395078908 | 38.3                    | 1.51 | 24.5  | .97  | 33.1  | 1.30 | 29.1  | 1.15 |
| 9            | 395073009        | 395073309 | 395073409        | 395073509  | 395073809        | 395073909 | 395078009        | 395078309 | 395078409        | 395078509  | 395078809        | 395078909 | 41.8                    | 1.65 | 28.0  | 1.10 | 36.6  | 1.44 | 32.6  | 1.28 |
| 10           | 395073010        | 395073310 | 395073410        | 395073510  | 395073810        | 395073910 | 395078010        | 395078310 | 395078410        | 395078510  | 395078810        | 395078910 | 45.3                    | 1.78 | 31.5  | 1.24 | 40.1  | 1.58 | 36.1  | 1.42 |
| 11           | 395073011        | 395073311 | 395073411        | 395073511  | 395073811        | 395073911 | 395078011        | 395078311 | 395078411        | 395078511  | 395078811        | 395078911 | 48.8                    | 1.92 | 35.0  | 1.38 | 43.6  | 1.72 | 39.6  | 1.56 |
| 12           | 395073012        | 395073312 | 395073412        | 395073512  | 395073812        | 395073912 | 395078012        | 395078312 | 395078412        | 395078512  | 395078812        | 395078912 | 52.3                    | 2.06 | 38.5  | 1.52 | 47.1  | 1.85 | 43.1  | 1.70 |
| 13           | 395073013        | 395073313 | 395073413        | 395073513  | 395073813        | 395073913 | 395078013        | 395078313 | 395078413        | 395078513  | 395078813        | 395078913 | 55.8                    | 2.20 | 42.0  | 1.65 | 50.6  | 1.99 | 46.6  | 1.83 |
| 14           | 395073014        | 395073314 | 395073414        | 395073514  | 395073814        | 395073914 | 395078014        | 395078314 | 395078414        | 395078514  | 395078814        | 395078914 | 59.3                    | 2.34 | 45.5  | 1.79 | 54.1  | 2.13 | 50.1  | 1.97 |
| 15           | 395073015        | 395073315 | 395073415        | 395073515  | 395073815        | 395073915 | 395078015        | 395078315 | 395078415        | 395078515  | 395078815        | 395078915 | 62.8                    | 2.47 | 49.0  | 1.93 | 57.6  | 2.27 | 53.6  | 2.11 |
| 16           | 395073016        | 395073316 | 395073416        | 395073516  | 395073816        | 395073916 | 395078016        | 395078316 | 395078416        | 395078516  | 395078816        | 395078916 | 66.3                    | 2.61 | 52.5  | 2.07 | 61.1  | 2.41 | 57.1  | 2.25 |
| 17           | 395073017        | 395073317 | 395073417        | 395073517  | 395073817        | 395073917 | 395078017        | 395078317 | 395078417        | 395078517  | 395078817        | 395078917 | 69.8                    | 2.75 | 56.0  | 2.21 | 64.6  | 2.54 | 60.6  | 2.39 |
| 18           | 395073018        | 395073318 | 395073418        | 395073518  | 395073818        | 395073918 | 395078018        | 395078318 | 395078418        | 395078518  | 395078818        | 395078918 | 73.3                    | 2.89 | 59.5  | 2.34 | 68.1  | 2.68 | 64.1  | 2.52 |
| 19           | 395073019        | 395073319 | 395073419        | 395073519  | 395073819        | 395073919 | 395078019        | 395078319 | 395078419        | 395078519  | 395078819        | 395078919 | 76.8                    | 3.02 | 63.0  | 2.48 | 71.6  | 2.82 | 67.6  | 2.66 |
| 20           | 395073020        | 395073320 | 395073420        | 395073520  | 395073820        | 395073920 | 395078020        | 395078320 | 395078420        | 395078520  | 395078820        | 395078920 | 80.3                    | 3.16 | 66.5  | 2.62 | 75.1  | 2.96 | 71.1  | 2.80 |

|   |                     |                                       |      |                 |  |                    |              |                        |
|---|---------------------|---------------------------------------|------|-----------------|--|--------------------|--------------|------------------------|
| SEE SHEET ONE<br>EC NO: WNA2010-0708<br>CHRYSLER YORK<br>CHRYSLER YORK<br>APPROVED BY<br>APPROVED BY                          | QUALITY SYMBOLS<br> | GENERAL TOLERANCES (UNLESS SPECIFIED) |      | DIMENSION STYLE |  | SCALE              | DESIGN UNITS | THIRD ANGLE PROJECTION |
|   |                     | mm                                    | INCH | MM/IN           |  | 3:1                | INCH         |                        |
|   |                     | DRAWN BY DATE                         |      | DATE            |  | TITLE              |              |                        |
|   |                     | CHECKED BY DATE                       |      | DATE            |  | TITLE              |              |                        |
| APPROVED BY DATE  |                     | DATE                                  |      | TITLE           |  | MOLEX INCORPORATED |              |                        |
| MATERIAL NO.  |                     | SEE CHART                             |      | DOCUMENT NO.    |  | SD-39507-001       |              |                        |
| DRAFT WHERE APPLICABLE MUST REMAIN WITHIN DIMENSIONS  |                     | SIZE                                  |      | SHEET NO.       |  | 2 OF 2             |              |                        |
| THIS DRAWING CONTAINS INFORMATION THAT IS PROPRIETARY TO MOLEX INCORPORATED AND SHOULD NOT BE USED WITHOUT WRITTEN PERMISSION |                     |                                       |      |                 |  |                    |              |                        |

9 8 7 6 5 4 3 2 1