

## **Excellent Integrated System Limited**

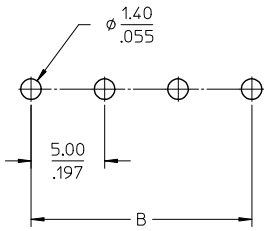
Stocking Distributor

Click to view price, real time Inventory, Delivery & Lifecycle Information:

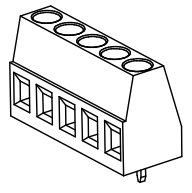
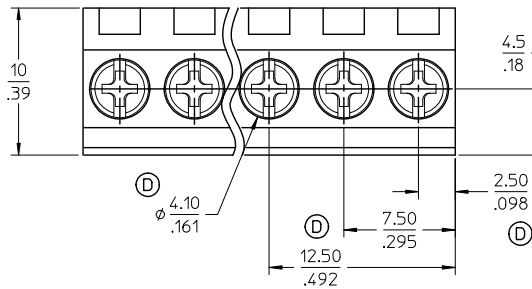
[Molex Connector Corporation](#)  
[0395933013](#)

For any questions, you can email us directly:  
[sales@integrated-circuit.com](mailto:sales@integrated-circuit.com)

39543



PCB LAYOUT



SPECIFICATIONS:

1. Material:

- A. Screw: M3, Steel Zinc plated
- B. Body: PA66, UL94 V-0
- C. Cage: Brass, Nickel plated
- D. Terminal: Brass, Tin Plated
- E. Cover: PA66, UL94 V-0

2. Wire range: 30 - 12AWG

3. Electrical rating: 300V, 15A

4. Max Torque: 4 in-lbs.

5. Wire strip length: .20IN. (5.00mm)

6. Insulation resistance: DC500V, 500MΩ

7. Operating temperature: -40°C to +105°C

8. Max solder temp: 260°C (500°F) for 5 seconds

9. A = N x P

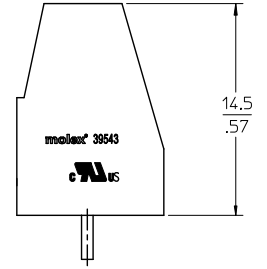
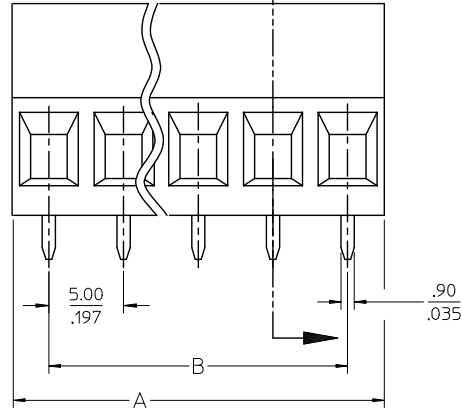
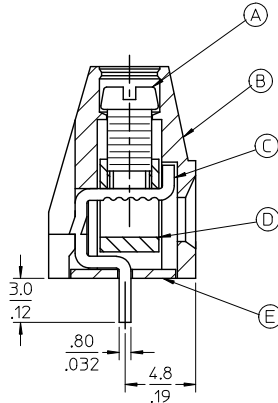
10. B = (N - 1) x P

11. P = (Pitch) = 5.00mm (.197")

12. N = Number of positions available 2 through 24

13. Dims shown are for reference only

14. All components are to be RoHS compliant



|                                                                                                                                           |                               |                                       |        |                                                         |                       |                                                                                                                               |                                                                           |                        |  |
|-------------------------------------------------------------------------------------------------------------------------------------------|-------------------------------|---------------------------------------|--------|---------------------------------------------------------|-----------------------|-------------------------------------------------------------------------------------------------------------------------------|---------------------------------------------------------------------------|------------------------|--|
| ADD DIMS. PER CUST REQST<br>EC NO.: IFC2015-0858<br>2014/11/05<br>DRWINSTONE<br>2014/11/10<br>CHKDB: ARDEN<br>APPR: JFURPHY<br>2015/04/22 | QUALITY SYMBOLS<br>▽=0<br>▽=0 | GENERAL TOLERANCES (UNLESS SPECIFIED) |        | DIMENSION STYLE<br>MM/IN                                |                       | SCALE<br>4:1                                                                                                                  | DESIGN UNITS<br>INCH                                                      | THIRD ANGLE PROJECTION |  |
|                                                                                                                                           |                               |                                       | mm     | INCH                                                    | DRAWN BY<br>LROTHAUS  | DATE<br>12/16/05                                                                                                              | TITLE<br>5.0MM, EURO TERM BLOCK<br>VERTICAL, PC MOUNT<br>STAMPED TERMINAL |                        |  |
|                                                                                                                                           |                               | 4 PLACES                              | ± .005 | ± .005                                                  | CHECKED BY<br>C. YORK | DATE<br>01/06/06                                                                                                              |                                                                           |                        |  |
|                                                                                                                                           |                               | 3 PLACES                              | ± .005 | ± .005                                                  | APPROVED BY<br>DATE   |                                                                                                                               | MOLEX INCORPORATED                                                        |                        |  |
|                                                                                                                                           | 2 PLACES                      | ± 0.13                                | ± .01  | MATERIAL NO.<br>SEE CHART                               |                       | DOCUMENT NO.<br>SD-39543-005                                                                                                  | SHEET NO.<br>1 OF 2                                                       |                        |  |
|                                                                                                                                           | 1 PLACE                       | ± 0.3                                 | ± .01  | DRAFT WHERE APPLICABLE<br>MUST REMAIN WITHIN DIMENSIONS |                       | THIS DRAWING CONTAINS INFORMATION THAT IS PROPRIETARY TO MOLEX INCORPORATED AND SHOULD NOT BE USED WITHOUT WRITTEN PERMISSION |                                                                           |                        |  |

10 9 8 7 6 5 4 3 2 39543

| Description                           | Circuit size | Material Numbers |           |           |                  |           |           | Dimensional Information |       |        |       |
|---------------------------------------|--------------|------------------|-----------|-----------|------------------|-----------|-----------|-------------------------|-------|--------|-------|
|                                       |              | Black            |           |           | Green            |           |           | Dim. A                  |       | Dim B  |       |
|                                       |              | 100% Tin         |           |           | 100% Tin         |           |           |                         |       |        |       |
|                                       |              | Printing Options |           |           | Printing Options |           |           |                         |       |        |       |
| None                                  | 10A          | 11A              | None      | 10A       | 11A              | mm        | inch      | mm                      | inch  |        |       |
| 5.0mm, Euro Block, PC Mount, Vertical | 2            | 395433002        | 395435002 | 395437002 | 395933002        | 395935002 | 395937002 | 10.00                   | 0.394 | 5.00   | 0.197 |
| 5.0mm, Euro Block, PC Mount, Vertical | 3            | 395433003        | 395435003 | 395437003 | 395933003        | 395935003 | 395937003 | 15.00                   | 0.591 | 10.00  | 0.394 |
| 5.0mm, Euro Block, PC Mount, Vertical | 4            | 395433004        | 395435004 | 395437004 | 395933004        | 395935004 | 395937004 | 20.00                   | 0.787 | 15.00  | 0.591 |
| 5.0mm, Euro Block, PC Mount, Vertical | 5            | 395433005        | 395435005 | 395437005 | 395933005        | 395935005 | 395937005 | 25.00                   | 0.984 | 20.00  | 0.787 |
| 5.0mm, Euro Block, PC Mount, Vertical | 6            | 395433006        | 395435006 | 395437006 | 395933006        | 395935006 | 395937006 | 30.00                   | 1.181 | 25.00  | 0.984 |
| 5.0mm, Euro Block, PC Mount, Vertical | 7            | 395433007        | 395435007 | 395437007 | 395933007        | 395935007 | 395937007 | 35.00                   | 1.378 | 30.00  | 1.181 |
| 5.0mm, Euro Block, PC Mount, Vertical | 8            | 395433008        | 395435008 | 395437008 | 395933008        | 395935008 | 395937008 | 40.00                   | 1.575 | 35.00  | 1.378 |
| 5.0mm, Euro Block, PC Mount, Vertical | 9            | 395433009        | 395435009 | 395437009 | 395933009        | 395935009 | 395937009 | 45.00                   | 1.772 | 40.00  | 1.575 |
| 5.0mm, Euro Block, PC Mount, Vertical | 10           | 395433010        | 395435010 | 395437010 | 395933010        | 395935010 | 395937010 | 50.00                   | 1.969 | 45.00  | 1.772 |
| 5.0mm, Euro Block, PC Mount, Vertical | 11           | 395433011        | 395435011 | 395437011 | 395933011        | 395935011 | 395937011 | 55.00                   | 2.165 | 50.00  | 1.969 |
| 5.0mm, Euro Block, PC Mount, Vertical | 12           | 395433012        | 395435012 | 395437012 | 395933012        | 395935012 | 395937012 | 60.00                   | 2.362 | 55.00  | 2.165 |
| 5.0mm, Euro Block, PC Mount, Vertical | 13           | 395433013        | 395435013 | 395437013 | 395933013        | 395935013 | 395937013 | 65.00                   | 2.559 | 60.00  | 2.362 |
| 5.0mm, Euro Block, PC Mount, Vertical | 14           | 395433014        | 395435014 | 395437014 | 395933014        | 395935014 | 395937014 | 70.00                   | 2.756 | 65.00  | 2.559 |
| 5.0mm, Euro Block, PC Mount, Vertical | 15           | 395433015        | 395435015 | 395437015 | 395933015        | 395935015 | 395937015 | 75.00                   | 2.953 | 70.00  | 2.756 |
| 5.0mm, Euro Block, PC Mount, Vertical | 16           | 395433016        | 395435016 | 395437016 | 395933016        | 395935016 | 395937016 | 80.00                   | 3.150 | 75.00  | 2.953 |
| 5.0mm, Euro Block, PC Mount, Vertical | 17           | 395433017        | 395435017 | 395437017 | 395933017        | 395935017 | 395937017 | 85.00                   | 3.346 | 80.00  | 3.150 |
| 5.0mm, Euro Block, PC Mount, Vertical | 18           | 395433018        | 395435018 | 395437018 | 395933018        | 395935018 | 395937018 | 90.00                   | 3.543 | 85.00  | 3.346 |
| 5.0mm, Euro Block, PC Mount, Vertical | 19           | 395433019        | 395435019 | 395437019 | 395933019        | 395935019 | 395937019 | 95.00                   | 3.740 | 90.00  | 3.543 |
| 5.0mm, Euro Block, PC Mount, Vertical | 20           | 395433020        | 395435020 | 395437020 | 395933020        | 395935020 | 395937020 | 100.00                  | 3.937 | 95.00  | 3.740 |
| 5.0mm, Euro Block, PC Mount, Vertical | 21           | 395433021        | 395435021 | 395437021 | 395933021        | 395935021 | 395937021 | 105.00                  | 4.134 | 100.00 | 3.937 |
| 5.0mm, Euro Block, PC Mount, Vertical | 22           | 395433022        | 395435022 | 395437022 | 395933022        | 395935022 | 395937022 | 110.00                  | 4.331 | 105.00 | 4.134 |
| 5.0mm, Euro Block, PC Mount, Vertical | 23           | 395433023        | 395435023 | 395437023 | 395933023        | 395935023 | 395937023 | 115.00                  | 4.528 | 110.00 | 4.331 |
| 5.0mm, Euro Block, PC Mount, Vertical | 24           | 395433024        | 395435024 | 395437024 | 395933024        | 395935024 | 395937024 | 120.00                  | 4.724 | 115.00 | 4.528 |

|                                                                                                                     |                                                      |                                       |                                                                                                                               |                                                                  |              |                        |
|---------------------------------------------------------------------------------------------------------------------|------------------------------------------------------|---------------------------------------|-------------------------------------------------------------------------------------------------------------------------------|------------------------------------------------------------------|--------------|------------------------|
| SEE SHEET 1<br>EC NO: PG2015-0858<br>D DRAINSTONE 20/11/05<br>CHKDB ARDEN 20/11/10<br>APPR: JMDRPHY 20/10/12<br>REV | QUALITY SYMBOLS                                      | GENERAL TOLERANCES (UNLESS SPECIFIED) | DIMENSION STYLE                                                                                                               | SCALE                                                            | DESIGN UNITS | THIRD ANGLE PROJECTION |
|                                                                                                                     | $\nabla=0$<br>$\nabla=0$                             | mm INCH                               | MM/IN                                                                                                                         | 1:1                                                              | INCH         |                        |
|                                                                                                                     |                                                      | 4 PLACES ± --- ± ---                  | DRAWN BY DATE                                                                                                                 | TITLE                                                            |              |                        |
|                                                                                                                     |                                                      | 3 PLACES ± --- ± .005                 | LROTHAUS 12/6/05                                                                                                              | 5.0MM, EURO TERM BLOCK<br>VERTICAL, PC MOUNT<br>STAMPED TERMINAL |              |                        |
|                                                                                                                     | 2 PLACES ± 0.13 ± .01                                | CHECKED BY DATE                       |                                                                                                                               |                                                                  |              |                        |
|                                                                                                                     | 1 PLACE ± 0.3 ± ---                                  | C. YORK 01/06/06                      |                                                                                                                               |                                                                  |              |                        |
|                                                                                                                     | 0 PLACE ± ±                                          | APPROVED BY DATE                      | MATERIAL NO.                                                                                                                  | DOCUMENT NO.                                                     | SHEET NO.    |                        |
|                                                                                                                     | ANGULAR ± 2 °                                        |                                       | SEE SHEET 1                                                                                                                   | SD-39543-005                                                     | 2 OF 2       |                        |
|                                                                                                                     | DRAFT WHERE APPLICABLE MUST REMAIN WITHIN DIMENSIONS |                                       | THIS DRAWING CONTAINS INFORMATION THAT IS PROPRIETARY TO MOLEX INCORPORATED AND SHOULD NOT BE USED WITHOUT WRITTEN PERMISSION |                                                                  |              |                        |

9 8 7 6 5 4 3 2 1