

Excellent Integrated System Limited

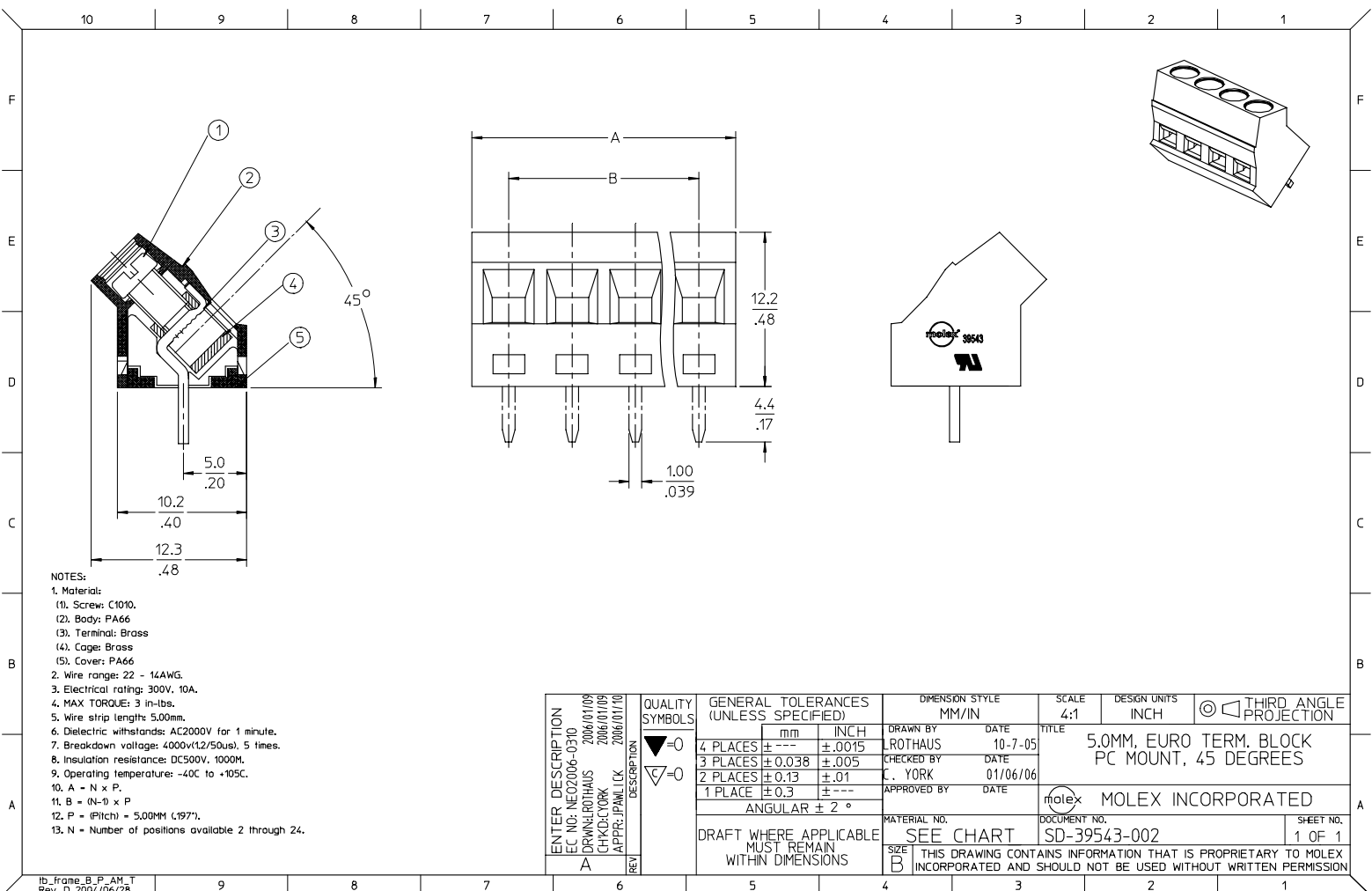
Stocking Distributor

Click to view price, real time Inventory, Delivery & Lifecycle Information:

[Molex Connector Corporation](#)
[0395936319](#)

For any questions, you can email us directly:

sales@integrated-circuit.com



- NOTES:
- Material:
 - (1), Screw: C1010.
 - (2), Body: PA66
 - (3), Terminal: Brass
 - (4), Cage: Brass
 - (5), Cover: PA66
 - Wire range: 22 - 14AWG.
 - Electrical rating: 300V, 10A.
 - MAX TORQUE: 3 in.-lbs.
 - Wire strip length: 5.0mm.
 - Dielectric withstands: AC2000V for 1 minute.
 - Breakdown voltage: 4000v*(12/50us), 5 times.
 - Insulation resistance: DC500V, 1000M.
 - Operating temperature: -40C to +105C.
 - A = N x P.
 - B = (N-1) x P.
 - P = (Pitch) = 5.00MM (.197").
 - N = Number of positions available 2 through 24.

| | | | | | | | |
|---|-------------------------------|---|----------------------|------------------------------|---|----------------------|------------------------|
| ENTER DESCRIPTION EC NO: NE02006-0310 DRAWN: LROTHAUS 2006/01/08 CHECKED: YORK 2006/01/08 APPR: JPANLICK 2006/01/10 | QUALITY SYMBOLS ▽=0 ▽=0 | GENERAL TOLERANCES (UNLESS SPECIFIED) | | DIMENSION STYLE MM/IN | SCALE 4:1 | DESIGN UNITS INCH | THIRD ANGLE PROJECTION |
| | | 4 PLACES ± --- ± .0015 3 PLACES ± 0.038 ± .005 2 PLACES ± 0.13 ± .01 1 PLACE ± 0.3 ± --- | DRAWN BY LROTHAUS | DATE 10-7-05 | TITLE 5.0MM, EURO TERM. BLOCK PC MOUNT, 45 DEGREES | | |
| A | REV | DRAFT WHERE APPLICABLE MUST REMAIN WITHIN DIMENSIONS | | CHECKED BY C. YORK | DATE 01/06/06 | MOLEX INCORPORATED | |
| | | MATERIAL NO. SEE CHART | APPROVED BY DATE | DOCUMENT NO. SD-39543-002 | SHEET NO. 1 OF 1 | | |

10 9 8 7 6 5 4 3 2 1

| Description | Circuit size | Material Numbers | | | | | | Dimensional Information | | | |
|-----------------------------------|--------------|------------------|-----------|-----------|------------------|-----------|-----------|-------------------------|-------|--------|-------|
| | | Black | | | Green | | | Dim. A mm inch mm inch | | | |
| | | 100% Tin | | | 100% Tin | | | | | | |
| | | Printing Options | | | Printing Options | | | | | | |
| 5.0mm Euro Block PC Mount, 45 Deg | 2 | 395434302 | 395436302 | 395438302 | 395934302 | 395936302 | 395938302 | 10.80 | 0.425 | 5.00 | 0.197 |
| 5.0mm Euro Block PC Mount, 45 Deg | 3 | 395434303 | 395436303 | 395438303 | 395934303 | 395936303 | 395938303 | 15.80 | 0.622 | 10.00 | 0.394 |
| 5.0mm Euro Block PC Mount, 45 Deg | 4 | 395434304 | 395436304 | 395438304 | 395934304 | 395936304 | 395938304 | 20.80 | 0.819 | 15.00 | 0.591 |
| 5.0mm Euro Block PC Mount, 45 Deg | 5 | 395434305 | 395436305 | 395438305 | 395934305 | 395936305 | 395938305 | 25.80 | 1.016 | 20.00 | 0.787 |
| 5.0mm Euro Block PC Mount, 45 Deg | 6 | 395434306 | 395436306 | 395438306 | 395934306 | 395936306 | 395938306 | 30.80 | 1.213 | 25.00 | 0.984 |
| 5.0mm Euro Block PC Mount, 45 Deg | 7 | 395434307 | 395436307 | 395438307 | 395934307 | 395936307 | 395938307 | 35.80 | 1.409 | 30.00 | 1.181 |
| 5.0mm Euro Block PC Mount, 45 Deg | 8 | 395434308 | 395436308 | 395438308 | 395934308 | 395936308 | 395938308 | 40.80 | 1.606 | 35.00 | 1.378 |
| 5.0mm Euro Block PC Mount, 45 Deg | 9 | 395434309 | 395436309 | 395438309 | 395934309 | 395936309 | 395938309 | 45.80 | 1.803 | 40.00 | 1.575 |
| 5.0mm Euro Block PC Mount, 45 Deg | 10 | 395434310 | 395436310 | 395438310 | 395934310 | 395936310 | 395938310 | 50.80 | 2.000 | 45.00 | 1.772 |
| 5.0mm Euro Block PC Mount, 45 Deg | 11 | 395434311 | 395436311 | 395438311 | 395934311 | 395936311 | 395938311 | 55.80 | 2.197 | 50.00 | 1.969 |
| 5.0mm Euro Block PC Mount, 45 Deg | 12 | 395434312 | 395436312 | 395438312 | 395934312 | 395936312 | 395938312 | 60.80 | 2.394 | 55.00 | 2.166 |
| 5.0mm Euro Block PC Mount, 45 Deg | 13 | 395434313 | 395436313 | 395438313 | 395934313 | 395936313 | 395938313 | 65.80 | 2.591 | 60.00 | 2.362 |
| 5.0mm Euro Block PC Mount, 45 Deg | 14 | 395434314 | 395436314 | 395438314 | 395934314 | 395936314 | 395938314 | 70.80 | 2.787 | 65.00 | 2.559 |
| 5.0mm Euro Block PC Mount, 45 Deg | 15 | 395434315 | 395436315 | 395438315 | 395934315 | 395936315 | 395938315 | 75.80 | 2.984 | 70.00 | 2.756 |
| 5.0mm Euro Block PC Mount, 45 Deg | 16 | 395434316 | 395436316 | 395438316 | 395934316 | 395936316 | 395938316 | 80.80 | 3.181 | 75.00 | 2.953 |
| 5.0mm Euro Block PC Mount, 45 Deg | 17 | 395434317 | 395436317 | 395438317 | 395934317 | 395936317 | 395938317 | 85.80 | 3.378 | 80.00 | 3.150 |
| 5.0mm Euro Block PC Mount, 45 Deg | 18 | 395434318 | 395436318 | 395438318 | 395934318 | 395936318 | 395938318 | 90.80 | 3.575 | 85.00 | 3.346 |
| 5.0mm Euro Block PC Mount, 45 Deg | 19 | 395434319 | 395436319 | 395438319 | 395934319 | 395936319 | 395938319 | 95.80 | 3.772 | 90.00 | 3.543 |
| 5.0mm Euro Block PC Mount, 45 Deg | 20 | 395434320 | 395436320 | 395438320 | 395934320 | 395936320 | 395938320 | 100.80 | 3.969 | 95.00 | 3.740 |
| 5.0mm Euro Block PC Mount, 45 Deg | 21 | 395434321 | 395436321 | 395438321 | 395934321 | 395936321 | 395938321 | 105.80 | 4.166 | 100.00 | 3.937 |
| 5.0mm Euro Block PC Mount, 45 Deg | 22 | 395434322 | 395436322 | 395438322 | 395934322 | 395936322 | 395938322 | 110.80 | 4.362 | 105.00 | 4.134 |
| 5.0mm Euro Block PC Mount, 45 Deg | 23 | 395434323 | 395436323 | 395438323 | 395934323 | 395936323 | 395938323 | 115.80 | 4.559 | 110.00 | 4.331 |
| 5.0mm Euro Block PC Mount, 45 Deg | 24 | 395434324 | 395436324 | 395438324 | 395934324 | 395936324 | 395938324 | 120.80 | 4.756 | 115.00 | 4.528 |

| | | | | | | |
|---|--------------------------------------|---|--|--|--|--|
| SEE SHEET 1 IEC NO: NEO2006-0310 DRAWN BY: L.ROTHAUS CHECKED BY: C. YORK APPR: J.PAWLIK 2006/01/08 2006/01/08 2006/01/10 | QUALITY SYMBOLS ▽=0 ▽=0 ▽=0 | GENERAL TOLERANCES (UNLESS SPECIFIED) mm INCH 4 PLACES ± --- ± .0015 3 PLACES ± 0.038 ± .005 2 PLACES ± 0.13 ± .01 1 PLACE ± 0.3 ± --- ANGULAR ± 2° | DIMENSION STYLE MM/IN DRAWN BY: L.ROTHAUS CHECKED BY: C. YORK APPROVED BY: | DATE: 12/16/05 DATE: 01/05/06 DATE: | SCALE: 4:1 DESIGN UNITS: INCH THIRD ANGLE PROJECTION | TITLE: 5.0MM, EURO TERM. BLOCK PC MOUNT, 45 DEGREE |
| | | DRAFT WHERE APPLICABLE MUST REMAIN WITHIN DIMENSIONS | MATERIAL NO.: SEE CHART SIZE: B | DOCUMENT NO.: SD-39543-002 MOLEX INCORPORATED | SHEET NO.: 2 OF 2 | |
| | | THIS DRAWING CONTAINS INFORMATION THAT IS PROPRIETARY TO MOLEX INCORPORATED AND SHOULD NOT BE USED WITHOUT WRITTEN PERMISSION | | | | |
| | | A | | | | |

9 8 7 6 5 4 3 2 1