



## Excellent Integrated System Limited

Stocking Distributor

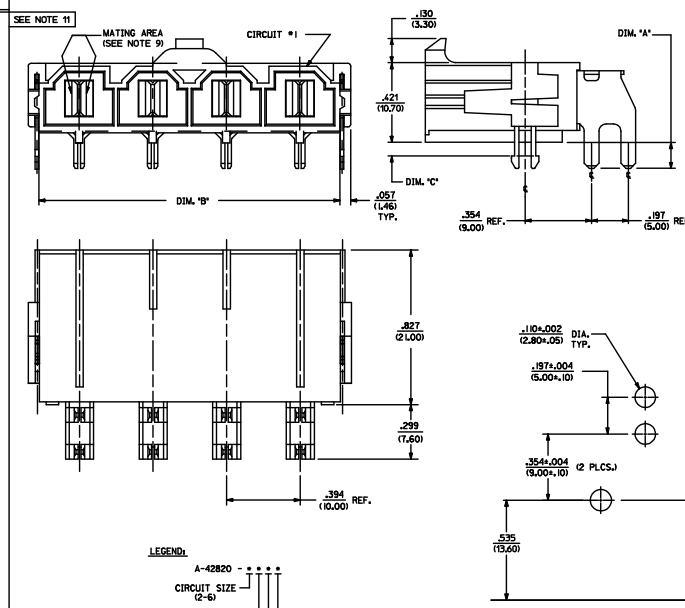
Click to view price, real time Inventory, Delivery & Lifecycle Information:

[Molex Connector Corporation](#)  
[0428203228](#)

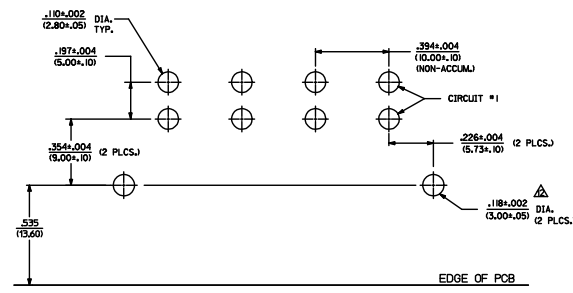
For any questions, you can email us directly:

[sales@integrated-circuit.com](mailto:sales@integrated-circuit.com)

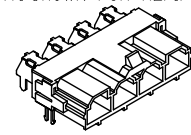
ITEM NUMBER	CKT. SIZE	DIM. 'A'	DIM. 'B'	DIM. 'C'	TERMINAL PLATING	CLIP PLATING
42820-2212	2	.138(3.50)	.823(20.90)	.071(1.80)		
42820-2219	2	.138(3.50)	.823(20.90)	.071(1.80)		
42820-2222	2	.201(5.10)	.823(20.90)	.102(2.60)		
42820-2232	2	.201(5.10)	.823(20.90)	.134(3.40)		
42820-2239	2	.201(5.10)	.823(20.90)	.134(3.40)		
42820-2242	2	.327(8.30)	.823(20.90)	.259(6.58)		
42820-3212	3	.138(3.50)	1.217(30.90)	.071(1.80)		
42820-3222	3	.201(5.10)	1.217(30.90)	.102(2.60)		
42820-3229	3	.201(5.10)	1.217(30.90)	.134(3.40)		
42820-3232	3	.201(5.10)	1.217(30.90)	.134(3.40)		
42820-3242	3	.327(8.30)	1.217(30.90)	.259(6.58)		
42820-4212	4	.138(3.50)	1.610(40.90)	.071(1.80)	OVERALL BRIGHT TIN	
42820-4312	4	.138(3.50)	1.610(40.90)	N/A		
42820-4222	4	.201(5.10)	1.610(40.90)	.102(2.60)		
42820-4232	4	.201(5.10)	1.610(40.90)	.134(3.40)		
42820-4242	4	.327(8.30)	1.610(40.90)	.259(6.58)		
42820-5212	5	.138(3.50)	2.004(50.90)	.071(1.80)		
42820-5222	5	.201(5.10)	2.004(50.90)	.102(2.60)		
42820-5232	5	.201(5.10)	2.004(50.90)	.134(3.40)		
42820-5242	5	.327(8.30)	2.004(50.90)	.259(6.58)		
42820-6212	6	.138(3.50)	2.398(60.90)	.071(1.80)	NONE	
42820-6222	6	.201(5.10)	2.398(60.90)	.102(2.60)		
42820-6229	6	.201(5.10)	2.398(60.90)	.102(2.60)		
42820-6232	6	.201(5.10)	2.398(60.90)	.134(3.40)		
42820-6242	6	.327(8.30)	2.398(60.90)	.259(6.58)		
42820-2312	2	.201(5.10)	.823(20.90)	N/A		
42820-2342	2	.327(8.30)	.823(20.90)	N/A		
42820-2213	2	.138(3.50)	.823(20.90)	.071(1.80)		
42820-2213	2	.138(3.50)	.823(20.90)	N/A		
42820-2223	2	.201(5.10)	.823(20.90)	.102(2.60)		
42820-2233	2	.201(5.10)	.823(20.90)	.134(3.40)		
42820-2243	2	.327(8.30)	.823(20.90)	.259(6.58)		
42820-3213	3	.138(3.50)	1.217(30.90)	.071(1.80)		
42820-3223	3	.201(5.10)	1.217(30.90)	.102(2.60)		
42820-3233	3	.201(5.10)	1.217(30.90)	.134(3.40)		
42820-3243	3	.327(8.30)	1.217(30.90)	.259(6.58)		
42820-4213	4	.138(3.50)	1.610(40.90)	.071(1.80)	SELECT GOLD IN CONTACT AREA	
42820-4223	4	.201(5.10)	1.610(40.90)	.102(2.60)		
42820-4233	4	.201(5.10)	1.610(40.90)	.134(3.40)		
42820-4243	4	.327(8.30)	1.610(40.90)	.259(6.58)	SELECT MATTE TIN ON SOLDER TAILS	
42820-5213	5	.138(3.50)	2.004(50.90)	.071(1.80)		
42820-5223	5	.201(5.10)	2.004(50.90)	.102(2.60)		
42820-5233	5	.201(5.10)	2.004(50.90)	.134(3.40)		
42820-5243	5	.327(8.30)	2.004(50.90)	.259(6.58)		
42820-6213	6	.138(3.50)	2.398(60.90)	.071(1.80)		
42820-6223	6	.201(5.10)	2.398(60.90)	.102(2.60)		
42820-6233	6	.201(5.10)	2.398(60.90)	.134(3.40)		
42820-6243	6	.327(8.30)	2.398(60.90)	.259(6.58)		



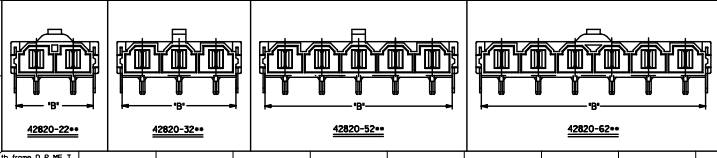
- NOTES:**
- 1) MATERIAL: HOUSING MATERIAL: 30% GLASS-FILLED NYLON 4/6, UL, 94V-0, COLOR: BLACK. TERMINAL MATERIAL: ALLOY 151.
  - 2) FINISH: 2- .000100(.00254) MIN. TIN OVER .000050(.00127) MIN. NICKEL. 3- .000030(.00076) MIN. SELECT GOLD IN CONTACT AREA. .000100(.00254) MIN. SELECT TIN ON SOLDER TAILS OVER .000050(.00127) MIN. NICKEL.
  - 3) PRODUCT SPECIFICATION PS-42815-001 SPECIFICATION PS-45498-002
  - 4) PACKAGING INFORMATION SEE MOLEX PACKAGING SPEC. PK-42820-910
  - 5) PART MATES WITH MOLEX RECEPTACLE \*42816-\*\*\*2 WITH TPA.
  - 6) PART IS DEFINED IN METRIC.
  - 7) AN 'X' IN FRONT OF THE ITEM NUMBER INDICATES THE PART IS NOT TOoled.
  - 8) PARTS ARE NOT TO BE MATED OR UNMATED WHILE CIRCUITS ARE LIVE.
  - 9) WHEN USING OVERALL TIN PLATED TERMINALS FOR APPLICATIONS INVOLVING VIBRATION AND/OR THERMAL CYCLING, MOLEX STRONGLY RECOMMENDS THE USE OF NYE LUBRICANT (NYGEL 7600) ON THE MATING SURFACES OF THE TERMINAL.
  - 10) PARTS CONFORMS TO CLASS 'B' REQUIREMENTS OF COSMETIC SPECIFICATION PS-45498-002
  - 11) FOR TAPE AND REEL PACKAGING REFER TO PK-45986-004
- △ BOARD CLIP HOLE MAY OR MAY NOT BE PLATED. REFER TO CHART FOR PLATED / UNPLATED CLIPS.



RECOMMENDED P.C. BOARD PLATED-THRU HOLE LAYOUT (4 CKT. SHOWN FOR REF.)



HEADER WITH RT. ANGLE TERMINAL & CLIP ISO VIEW



QUALITY SYMBOLS	GENERAL TOLERANCES (UNLESS SPECIFIED)		DIMENSION STYLE		SCALE	DESIGN UNITS	THIRD ANGLE PROJECTION
	mm	INCH	IN/MM	DATE			
▽=0	4 PLACES ±.005	±.0005	AELHAG	2010/08/05	4:1	METRIC	RIGHT ANGLE HEADER ASSEMBLY MINIFIT SR. SERIES
▽=0	3 PLACES ±.005	±.0005	JBELL	2010/08/05			
▽=0	2 PLACES ±0.25	±.005	APPROVED BY	DATE			
▽=0	1 PLACE ±0.40	±.010	FSMITH	2010/08/26			
	0 PLACE						

DRAFT WHERE APPLICABLE MUST REMAIN WITHIN DIMENSIONS

SEE CHART

DOCUMENT NO. SDA-42820-0002

SHEET NO. 1 OF 1