

## Excellent Integrated System Limited

Stocking Distributor

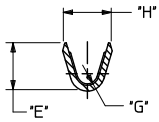
Click to view price, real time Inventory, Delivery & Lifecycle Information:

[Molex Connector Corporation](#)  
[0430310053](#)

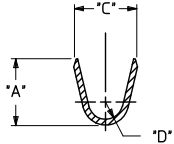
For any questions, you can email us directly:

[sales@integrated-circuit.com](mailto:sales@integrated-circuit.com)

ITEM NUMBER	PLATING OPTION	WIRE SIZE	ASSEMBLY OPTION	"A" ±.016 (±0.41)	"C" ±.012 (±0.30)	"D" ±.005 (±0.13)	"E" ±.016 (±0.41)	"G" ±.005 (±0.13)	"H" ±.012 (±0.30)	
43031-0051	C	20-24	CHAIN	.090/(2.29)	.100/(2.54)	.030/(0.76)	R	.075/(1.91)	.025/(0.64) R	.082/(2.08)
43031-0052	A	20-24	CHAIN	.090/(2.29)	.100/(2.54)	.030/(0.76)	R	.075/(1.91)	.025/(0.64) R	.082/(2.08)
43031-0053	B	20-24	CHAIN	.090/(2.29)	.100/(2.54)	.030/(0.76)	R	.075/(1.91)	.025/(0.64) R	.082/(2.08)
43031-0059	B	20-24	LOOSE	.090/(2.29)	.100/(2.54)	.030/(0.76)	R	.075/(1.91)	.025/(0.64) R	.082/(2.08)
43031-0106	B	26-30	CHAIN	.075/(1.91)	.083/(2.10)	.025/(0.64)	R	.058/(1.47)	.020/(0.51) R	.065/(1.65)

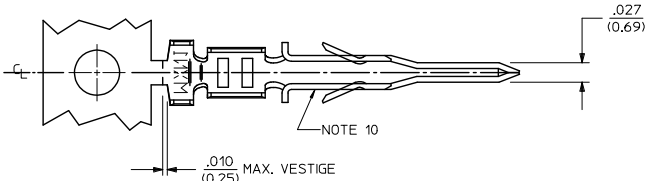


SECTION "B"- "B"



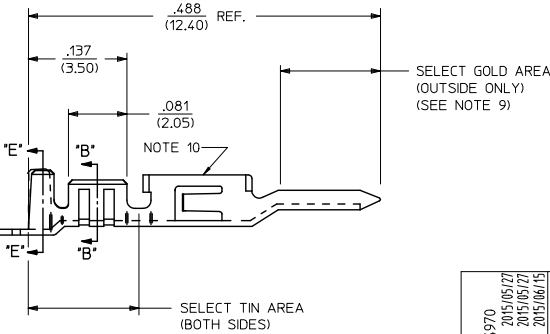
SECTION "E"- "E"

AWG:	MAX. INSULATION
20-24	.073/(1.85)
26-30	.050/(1.27)



NOTES:

- MATERIAL: PHOSPHOR BRONZE ALLOY.
- TERMINAL PLATING:  
 A = .000015/(0.00038) MIN. SELECT GOLD  
 .000100/(0.002543) MIN. SELECT TIN  
 OVER .000050/(0.00127) MIN. NICKEL  
 B = .000030/(0.00076) MIN. SELECT GOLD  
 .000100/(0.002543) MIN. SELECT TIN  
 OVER .000050/(0.00127) MIN. NICKEL  
 C = HOT TIN DIP: .000040/(0.00102) MIN  
 \*MATERIAL NUMBERS WITH SELECT PLATING ARE POST-PLATED AFTER FORMING.
- PRODUCT SPECIFICATION: PS-43045, PS-43650, PS-44300-001.
- PACKAGING SPECIFICATION: PK-43031-002 (REEL), PK-43030-003 (LOOSE).
- TERMINAL FOR USE IN MICROFIT PLUG 43020-\*\*\*\*, 43640-\*\*\*\*, AND 44300-\*\*\*\*.
- FOR TERMINAL ORIENTATION IN PLUG SEE DRAWING SDA-43020-\*\*\*\* OR SD-43640-\*\*\*\*.
- THIS TERMINAL IS DESIGNED IN METRIC.
- THE PRIMARY SHIPPING CARTON WILL BE LABELED: "COMPLIANT TO RoHS DIRECTIVE 2002/95/EC AND ELV ANNEX II OF DIRECTIVE 2000/53/EC." ASSEMBLIES WILL BE COMPLIANT TO THE RoHS AND ELV (LEAD-FREE) DIRECTIVES.
- SOME GOLD MAY BE PRESENT ON INSIDE SURFACE.
- TERMINAL MAY HAVE AN INWARD OR OUTWARD FORMED SHAPE IN THIS AREA.



ADD NOTE 10 EC NO: UCP2015-4970 DRAWN: JPOX 2015/05/27 CHKD: SMOSEK 2015/05/27 APPROV: SMITH 2015/06/15	QUALITY SYMBOLS ∇=0 ∇=0 ∇=0	GENERAL TOLERANCES (UNLESS SPECIFIED)		DIMENSION STYLE		SCALE	DESIGN UNITS	THIRD ANGLE PROJECTION	
				IN/MM		---	METRIC		
		4 PLACES ±---	±---	DRAWN BY	DATE	TITLE			
		3 PLACES ±---	±.014	RHOLTS	2004/07/25	MICRO-FIT (3.0) MALE TERMINAL LEAD-FREE 			
2 PLACES ±0.25	±.010	CHECKED BY	DATE						
1 PLACE ±0.35	±---	LSCHMIDT	2004/07/25						
0 PLACE ±	±	APPROVED BY	DATE	MATERIAL NO.		DOCUMENT NO.		SHEET NO.	
		FSMITH	2004/07/25	SEE CHART		SD-43031-001		1 OF 1	
DRAFT WHERE APPLICABLE MUST REMAIN WITHIN DIMENSIONS		THIS DRAWING CONTAINS INFORMATION THAT IS PROPRIETARY TO MOLEX INCORPORATED AND SHOULD NOT BE USED WITHOUT WRITTEN PERMISSION							