

## Excellent Integrated System Limited

Stocking Distributor

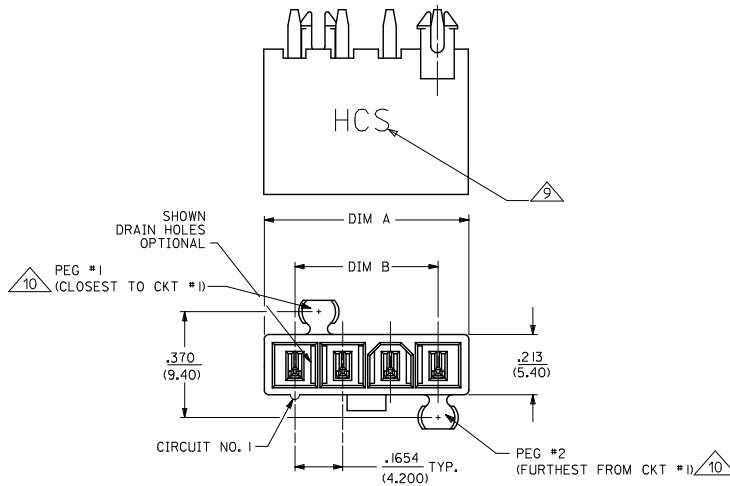
Click to view price, real time Inventory, Delivery & Lifecycle Information:

[Molex Connector Corporation](#)  
[0444721052](#)

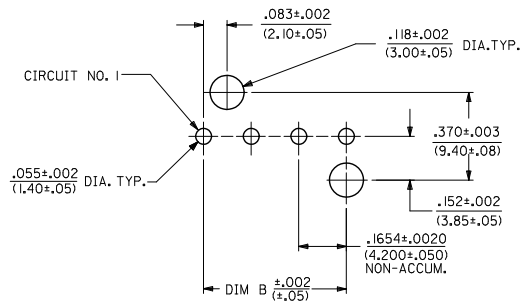
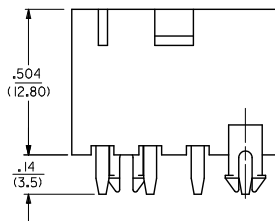
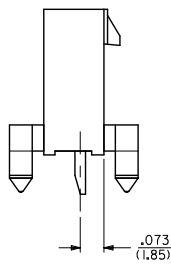
For any questions, you can email us directly:

[sales@integrated-circuit.com](mailto:sales@integrated-circuit.com)

CKT SIZE	DIM A	DIM B
4	.709 (18.00)	.496 (12.60)
5	.874 (22.20)	.661 (16.80)
6	1.039 (26.40)	.827 (21.00)
7	1.205 (30.60)	.992 (25.20)
8	1.370 (34.80)	1.157 (29.40)
9	1.535 (39.00)	1.323 (33.60)
10	1.701 (43.20)	1.488 (37.80)
11	1.866 (47.40)	1.654 (42.00)
12	2.031 (51.60)	1.819 (46.20)



- NOTES:
- MATERIALS:
    - HOUSING:
      - \*1=NYLON 6/6, UL94 V-2, COLOR: NATURAL
      - \*2=NYLON 6/6, UL94 V-0, COLOR: NATURAL
      - \*3=NYLON 6/6, UL94 V-2, COLOR: BLACK
    - TERMINALS:
      - COPPER ALLOY
  - TERMINAL PLATING:
    - \*1=.000100/(0.00254) MIN. MATTE TIN OVER .000050/(0.00127) MIN. NICKEL
    - \*2=.000030/(0.00076) MIN. SELECT GOLD AND .000100/(0.00254) MIN. SELECT MATTE TIN OVER .000050/(0.00127) MIN. NICKEL OVERALL
  - PRODUCT SPECIFICATION: PS-44476-001
  - PACKAGING: SEE CHARTS
  - PART MATES WITH MINI-FIT JR. RECEPTACLE NO. 5557.
  - PART IS NOT DESIGNED FOR CURRENT SHARING.
  - PARTS ARE NOT TO BE MATED OR UN-MATED WHILE CIRCUITS ARE LIVE.
  - 44472-2470 ONLY FOR WIDER LOCKING RAMP.
  - PARTS WILL HAVE "HCS" MARKING.
  - SEE CHART FOR PARTS WITH PEGS REMOVED.
  - PART CONFORMS TO CLASS "B" REQUIREMENTS OF COSMETIC SPECIFICATION PS-45499-002.



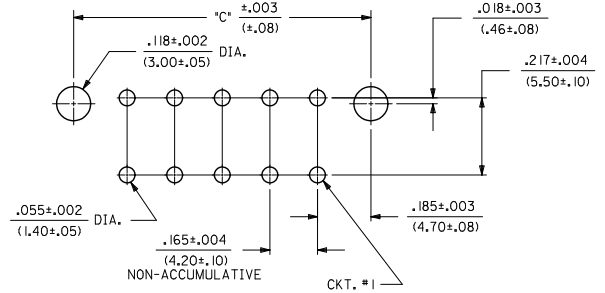
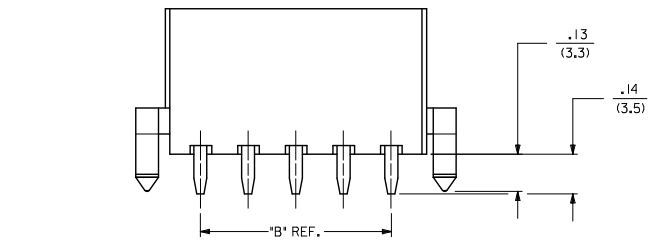
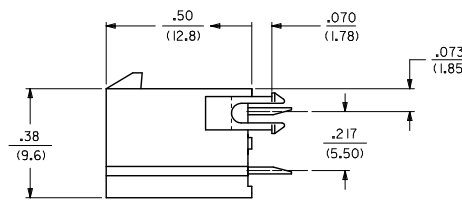
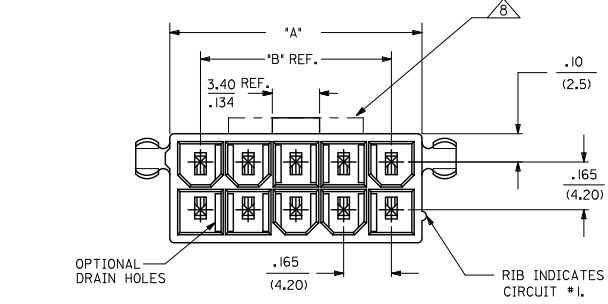
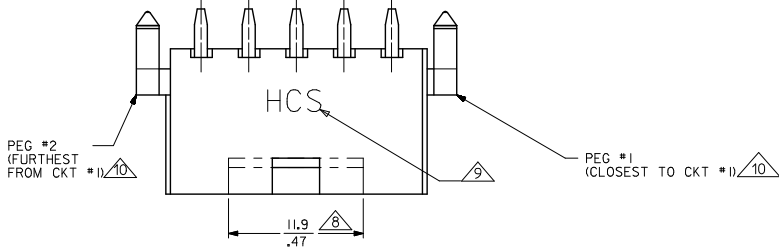
RECOMMENDED HOLE LAYOUT FOR .070/(1.78) MAX. THICK P. C. BOARD VIEWED FROM COMPONENT SIDE

LEGEND: 44472 - \*\* \*\*  
 CIRCUIT SIZE (04-12 FOR SINGLE ROW) (02-24 FOR DUAL ROW)  
 ASSEMBLY VERSION (01 THRU 49 FOR SINGLE ROW) (50 THRU 99 FOR DUAL ROW)

SEE SHT. 2 FOR DUAL ROW  
 \* THE CHART FOR SINGLE ROW PRODUCT IS ON PAGE 6.

CHANGE PLATING	EC NO.	DATE	DRAWN BY	DATE	TITLE	GENERAL TOLERANCES (UNLESS SPECIFIED)		DIMENSION STYLE		SCALE	DESIGN UNITS	THIRD ANGLE PROJECTION
						mm	INCH	IN/MM	IN/MM			
UCP2012-1560	2012/01/05	2012/01/05	GEP	1994/07/25	MINI-FIT VERT HDR ASSY W & W/O PEGS/DRAIN HOLES SINGLE AND DUAL ROW	4 PLACES ± .005	± .005	DRAWN BY	DATE	4:1	METRIC	MOLEX INCORPORATED
DRWINGUNEN	2012/01/05	2012/01/05	RJF	1994/07/25		3 PLACES ± .015	± .015	CHECKED BY	DATE			
CHKD: BELL	2012/01/05	2012/01/05	RJF	1994/07/25		2 PLACES ± 0.38	± .020	APPROVED BY	DATE			
APPR: SMITH	2012/02/02		RJF	1994/07/25		1 PLACE ± 0.50	± .005					
						ANGULAR ± 1/2°						
						DRAFT WHERE APPLICABLE MUST REMAIN WITHIN DIMENSIONS						
						SEE CHARTS						
						THIS DRAWING CONTAINS INFORMATION THAT IS PROPRIETARY TO MOLEX INCORPORATED AND SHOULD NOT BE USED WITHOUT WRITTEN PERMISSION						

CIRCUIT SIZE	DIM. "A"	DIM. "B"	DIM. "C"
2	.21 (5.4)	—	.370 (9.40)
4	.38 (9.6)	.17 (4.2)	.535 (13.60)
6	.54 (13.8)	.33 (8.4)	.701 (17.80)
8	.71 (18.0)	.50 (12.6)	.866 (22.00)
10	.87 (22.2)	.66 (16.8)	1.031 (26.20)
12	1.04 (26.4)	.83 (21.0)	1.197 (30.40)
14	1.20 (30.6)	.99 (25.2)	1.362 (34.60)
16	1.37 (34.8)	1.16 (29.4)	1.528 (38.80)
18	1.54 (39.0)	1.32 (33.6)	1.693 (43.00)
20	1.70 (43.2)	1.49 (37.8)	1.858 (47.20)
22	1.87 (47.4)	1.65 (42.0)	2.024 (51.40)
24	2.03 (51.6)	1.82 (46.2)	2.189 (55.60)



RECOMMENDED HOLE LAYOUT FOR .070/(1.78) MAX. THICK P. C. BOARD  
VIEWED FROM COMPONENT SIDE

SEE SHT. 1 FOR SINGLE ROW

SEE SHEET 1 EC NO: UCP2072-1560 DRAWING NO: 2072/01/05 CHKD: BELL APPR: SMITH DATE: 2072/02/02	QUALITY SYMBOLS ∇=0 ∇=0 ∇=0	GENERAL TOLERANCES (UNLESS SPECIFIED)		DIMENSION STYLE IN/MM		SCALE 4:1	DESIGN UNITS METRIC	THIRD ANGLE PROJECTION		
		4 PLACES ± --- ± ---	3 PLACES ± --- ± .015	2 PLACES ± 0.38 ± .020	1 PLACE ± 0.50 ± ---	ANGULAR ± 1/2°	DRAWN BY GEP DATE 1994/07/25	CHECKED BY R/JF DATE 1994/07/25	APPROVED BY R/JF DATE 1994/07/25	TITLE MINI-FIT VERT HDR ASSY W & W/O PEGS/DRAIN HOLES SINGLE AND DUAL ROW
		DRAFT WHERE APPLICABLE MUST REMAIN WITHIN DIMENSIONS			SEE CHARTS	MATERIAL NO. SDA-44472-****	DOCUMENT NO.	SHEET NO. 2 OF 8	MOLEX INCORPORATED	
		THIS DRAWING CONTAINS INFORMATION THAT IS PROPRIETARY TO MOLEX INCORPORATED AND SHOULD NOT BE USED WITHOUT WRITTEN PERMISSION								

DUAL ROW PART NUMBERS WITH MATTE TIN PLATING

WITH PEGS

PLATING:	I (SEE NOTE 2)	PLATING:	I (SEE NOTE 2)	PLATING:	I (SEE NOTE 2)	PLATING:	I (SEE NOTE 2)
DRAINS:	WITHOUT DRAIN HOLES	DRAINS:	WITHOUT DRAIN HOLES	DRAINS:	WITH DRAIN HOLES	DRAINS:	WITH DRAIN HOLES
PEGS:	WITH PEGS	PEGS:	WITH PEGS	PEGS:	WITH PEGS	PEGS:	WITH PEGS
MAT'L:	94V-2 [NATURAL]	MAT'L:	94V-0 [NATURAL]	MAT'L:	94V-2 [NATURAL]	MAT'L:	94V-0 [NATURAL]
PACKAGING:	PK-5566-001	PACKAGING:	PK-5566-001	PACKAGING:	PK-5566-001	PACKAGING:	PK-5566-001
ITEM NO.	CKTS	ITEM NO.	CKTS	ITEM NO.	CKTS	ITEM NO.	CKTS
44472-0250	2	44472-0251	2	44472-0252	2	44472-0253	2
44472-0450	4	44472-0451	4	44472-0452	4	44472-0453	4
44472-0650	6	44472-0651	6	44472-0652	6	44472-0653	6
44472-0850	8	44472-0851	8	44472-0852	8	44472-0853	8
44472-1050	10	44472-1051	10	44472-1052	10	44472-1053	10
44472-1250	12	44472-1251	12	44472-1252	12	44472-1253	12
44472-1450	14	44472-1451	14	44472-1452	14	44472-1453	14
44472-1650	16	44472-1651	16	44472-1652	16	44472-1653	16
44472-1850	18	44472-1851	18	44472-1852	18	44472-1853	18
44472-2050	20	44472-2051	20	44472-2052	20	44472-2053	20
44472-2250	22	44472-2251	22	44472-2252	22	44472-2253	22
44472-2450	24	44472-2451	24	44472-2452	24	44472-2453	24

WITHOUT PEGS

PLATING:	I (SEE NOTE 2)	PLATING:	I (SEE NOTE 2)	PLATING:	I (SEE NOTE 2)	PLATING:	I (SEE NOTE 2)
DRAINS:	WITHOUT DRAIN HOLES	DRAINS:	WITHOUT DRAIN HOLES	DRAINS:	WITH DRAIN HOLES	DRAINS:	WITH DRAIN HOLES
PEGS:	WITHOUT PEGS	PEGS:	WITHOUT PEGS	PEGS:	WITHOUT PEGS	PEGS:	WITHOUT PEGS
MAT'L:	94V-2 [NATURAL]	MAT'L:	94V-0 [NATURAL]	MAT'L:	94V-2 [NATURAL]	MAT'L:	94V-0 [NATURAL]
PACKAGING:	PK-5566-001	PACKAGING:	PK-5566-001	PACKAGING:	PK-5566-001	PACKAGING:	PK-5566-001
ITEM NO.	HOUSING NO.	CKTS	ITEM NO.	CKTS	ITEM NO.	CKTS	ITEM NO.
44472-0254		2	44472-0255	2	44472-0256	2	44472-0257
44472-0454		4	44472-0455	4	44472-0456	4	44472-0457
44472-0654		6	44472-0655	6	44472-0656	6	44472-0657
44472-0854		8	44472-0855	8	44472-0856	8	44472-0857
44472-1054		10	44472-1055	10	44472-1056	10	44472-1057
44472-1254		12	44472-1255	12	44472-1256	12	44472-1257
44472-1454		14	44472-1455	14	44472-1456	14	44472-1457
44472-1654		16	44472-1655	16	44472-1656	16	44472-1657
44472-1854		18	44472-1855	18	44472-1856	18	44472-1857
44472-2054		20	44472-2055	20	44472-2056	20	44472-2057
44472-2254		22	44472-2255	22	44472-2256	22	44472-2257
44472-2454		24	44472-2455	24	44472-2456	24	44472-2457

\* ITEMS PRECEDED BY AN '\*X' ARE NOT AVAILABLE.

SEE SHEET 1 EC NO: UCP2072-1560 DRAWING NO: 2072/01/05 CHKD: BELL APPR: SM/TH 2072/02/02	QUALITY SYMBOLS ∇=0 ∇=0 ∇=0	GENERAL TOLERANCES (UNLESS SPECIFIED)		DIMENSION STYLE		SCALE	DESIGN UNITS	THIRD ANGLE PROJECTION	
				IN/MM		1:1	METRIC		
		4 PLACES ±---	±---	DRAWN BY	DATE	TITLE			
		3 PLACES ±---	±.015	GEP	1994/07/25	MINI-FIT VERT HDR ASSY W & W/O PEGS/DRAIN HOLES SINGLE AND DUAL ROW			
2 PLACES ±0.38	±.020	CHECKED BY	DATE	MOLEX INCORPORATED					
1 PLACE ±0.50 ±---		RJF	1994/07/25						
ANGULAR ±1/2°		APPROVED BY	DATE	MATERIAL NO.		DOCUMENT NO.	SHEET NO.		
		RJF	1994/07/25			SDA-44472-****	3 OF 8		
DRAFT WHERE APPLICABLE MUST REMAIN WITHIN DIMENSIONS				SEE CHARTS		THIS DRAWING CONTAINS INFORMATION THAT IS PROPRIETARY TO MOLEX INCORPORATED AND SHOULD NOT BE USED WITHOUT WRITTEN PERMISSION			

DUAL ROW PART NUMBERS WITH SELECT GOLD PLATING

WITH PEGS

PLATING: 2 (SEE NOTE 2)		PLATING: 2 (SEE NOTE 2)		PLATING: 2 (SEE NOTE 2)		PLATING: 2 (SEE NOTE 2)	
DRAINS: WITHOUT DRAIN HOLES		DRAINS: WITHOUT DRAIN HOLES		DRAINS: WITH DRAIN HOLES		DRAINS: WITH DRAIN HOLES	
PEGS: WITH PEGS		PEGS: WITH PEGS		PEGS: WITH PEGS		PEGS: WITH PEGS	
MAT'L: 94V-2 [NATURAL]		MAT'L: 94V-0 [NATURAL]		MAT'L: 94V-2 [NATURAL]		MAT'L: 94V-0 [NATURAL]	
PACKAGING: PK-5566-001		PACKAGING: PK-5566-001		PACKAGING: PK-5566-001		PACKAGING: PK-5566-001	
ITEM NO.	CKTS	ITEM NO.	CKTS	ITEM NO.	CKTS	ITEM NO.	CKTS
X 44472-0260	2	X 44472-0261	2	44472-0262	2	X 44472-0263	2
X 44472-0460	4	X 44472-0461	4	X 44472-0462	4	X 44472-0463	4
X 44472-0660	6	X 44472-0661	6	X 44472-0662	6	X 44472-0663	6
X 44472-0860	8	X 44472-0861	8	X 44472-0862	8	X 44472-0863	8
X 44472-1060	10	X 44472-1061	10	X 44472-1062	10	X 44472-1063	10
X 44472-1260	12	X 44472-1261	12	X 44472-1262	12	X 44472-1263	12
X 44472-1460	14	X 44472-1461	14	X 44472-1462	14	X 44472-1463	14
X 44472-1660	16	X 44472-1661	16	X 44472-1662	16	X 44472-1663	16
X 44472-1860	18	X 44472-1861	18	X 44472-1862	18	X 44472-1863	18
X 44472-2060	20	X 44472-2061	20	X 44472-2062	20	X 44472-2063	20
X 44472-2260	22	X 44472-2261	22	X 44472-2262	22	X 44472-2263	22
X 44472-2460	24	X 44472-2461	24	X 44472-2462	24	X 44472-2463	24

WITHOUT PEGS

PLATING: 2 (SEE NOTE 2)		PLATING: 2 (SEE NOTE 2)		PLATING: 2 (SEE NOTE 2)		PLATING: 2 (SEE NOTE 2)	
DRAINS: WITHOUT DRAIN HOLES		DRAINS: WITHOUT DRAIN HOLES		DRAINS: WITH DRAIN HOLES		DRAINS: WITH DRAIN HOLES	
PEGS: WITHOUT PEGS		PEGS: WITHOUT PEGS		PEGS: WITHOUT PEGS		PEGS: WITHOUT PEGS	
MAT'L: 94V-2 [NATURAL]		MAT'L: 94V-0 [NATURAL]		MAT'L: 94V-0 [NATURAL]		MAT'L: 94V-0 [NATURAL]	
PACKAGING: PK-5566-001		PACKAGING: PK-5566-001		PACKAGING: PK-5566-001		PACKAGING: PK-5566-001	
ITEM NO.	CKTS	ITEM NO.	CKTS	ITEM NO.	CKTS	ITEM NO.	CKTS
X 44472-0264	2	X 44472-0265	2			X 44472-0267	2
X 44472-0464	4	X 44472-0465	4			X 44472-0467	4
X 44472-0664	6	X 44472-0665	6			X 44472-0667	6
X 44472-0864	8	X 44472-0865	8			X 44472-0867	8
X 44472-1064	10	X 44472-1065	10			X 44472-1067	10
X 44472-1264	12	X 44472-1265	12			X 44472-1267	12
X 44472-1464	14	X 44472-1465	14			X 44472-1467	14
X 44472-1664	16	X 44472-1665	16			X 44472-1667	16
X 44472-1864	18	X 44472-1865	18			X 44472-1867	18
X 44472-2064	20	X 44472-2065	20			X 44472-2067	20
X 44472-2264	22	X 44472-2265	22			X 44472-2267	22
X 44472-2464	24	X 44472-2465	24			X 44472-2467	24

\* ITEMS PRECEDED BY A 'X' ARE NOT AVAILABLE.

SEE SHEET 1 EC NO: UCP2072-1560 DRAWING NO: 2072/01/05 CHKD: BELL APPR: SMITH DATE: 2072/02/02	QUALITY SYMBOLS ▽=0 ▽=0 ▽=0	GENERAL TOLERANCES (UNLESS SPECIFIED)		DIMENSION STYLE		SCALE	DESIGN UNITS	THIRD ANGLE PROJECTION	
				IN/MM		1:1	METRIC		
		4 PLACES ± --- ± ---		DRAWN BY DATE		TITLE			
		3 PLACES ± --- ± 0.15		GEP 1994/07/25		MINI-FIT VERT HDR ASSY W & W/O PEGS/DRAIN HOLES SINGLE AND DUAL ROW			
2 PLACES ± 0.38 ± 0.20		CHECKED BY DATE		MOLEX INCORPORATED					
1 PLACE ± 0.50 ± ---		R.J.F. 1994/07/25							
ANGULAR ± 1/2°		APPROVED BY DATE							
		R.J.F. 1994/07/25							
DRAFT WHERE APPLICABLE MUST REMAIN WITHIN DIMENSIONS		MATERIAL NO.		DOCUMENT NO.		SHEET NO.			
		SEE CHARTS		SDA-44472-****		4 OF 8			
		THIS DRAWING CONTAINS INFORMATION THAT IS PROPRIETARY TO MOLEX INCORPORATED AND SHOULD NOT BE USED WITHOUT WRITTEN PERMISSION							

DUAL ROW PART NUMBERS WITH WIDE LATCH OPTION

WITH PEGS

PLATING:	I (SEE NOTE 2)
DRAINS:	WITH DRAIN HOLES
PEGS:	WITH PEGS
MAT'L:	94V-2 [NATURAL]
PACKAGING:	PK-5566-001

	ITEM NO.	CKTS
X	44472-0270	2
X	44472-0470	4
X	44472-0670	6
X	44472-0870	8
X	44472-1070	10
X	44472-1270	12
X	44472-1470	14
X	44472-1670	16
X	44472-1870	18
X	44472-2070	20
X	44472-2270	22
	44472-2470	24

\* ITEMS PRECEDED BY 'X' ARE NOT AVAILABLE.

SEE SHEET 1 EC NO: UCP2072-1560 DRAWING NO: 2017/01/05 CHKD: BELL APPR: SMITH DATE: 2017/02/02	QUALITY SYMBOLS ▽=0 ▽=0 ▽=0	GENERAL TOLERANCES (UNLESS SPECIFIED)		DIMENSION STYLE		SCALE	DESIGN UNITS	THIRD ANGLE PROJECTION	
				IN/MM		1:1	METRIC		
		4 PLACES	± ---	± ---	DRAWN BY	DATE	TITLE		
		3 PLACES	± ---	± .015	GEP	1994/07/25	MINI-FIT VERT HDR ASSY W & W/O PEGS/DRAIN HOLES SINGLE AND DUAL ROW		
2 PLACES	± 0.38	± .020	CHECKED BY	DATE	MOLEX INCORPORATED				
1 PLACE	± 0.50	± ---	RJF	1994/07/25					
ANGULAR		± 1/2°	APPROVED BY	DATE	MATERIAL NO.	DOCUMENT NO.	SHEET NO.		
			RJF	1994/07/25	SEE CHART	SDA-44472-****	5 OF 8		
DRAFT WHERE APPLICABLE MUST REMAIN WITHIN DIMENSIONS		SIZE		THIS DRAWING CONTAINS INFORMATION THAT IS PROPRIETARY TO MOLEX INCORPORATED AND SHOULD NOT BE USED WITHOUT WRITTEN PERMISSION					

SINGLE ROW PART NUMBERS WITH PEGS

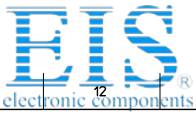
MATTE TIN PLATING

PLATING: 1 (SEE NOTE 2)		PLATING: 1 (SEE NOTE 2)		PLATING: 1 (SEE NOTE 2)		PLATING: 1 (SEE NOTE 2)	
DRAINS: WITH DRAIN HOLES		DRAINS: WITH DRAIN HOLES		DRAINS: WITHOUT DRAIN HOLES		DRAINS: WITHOUT DRAIN HOLES	
PEGS: WITH PEGS		PEGS: WITH PEGS		PEGS: WITH PEGS		PEGS: WITH PEGS	
MAT'L: 94V-2 [NATURAL]		MAT'L: 94V-0 [NATURAL]		MAT'L: 94V-2 [NATURAL]		MAT'L: 94V-0 [NATURAL]	
PACKAGING: PK-5566-002		PACKAGING: PK-5566-002		PACKAGING: PK-5566-002		PACKAGING: PK-5566-002	
ITEM NO.	CKTS	ITEM NO.	CKTS	ITEM NO.	CKTS	ITEM NO.	CKTS
44472-0401	4 X	44472-0402	4	44472-0403	4 X	44472-0404	4
X 44472-0501	5	44472-0502	5 X	44472-0503	5	44472-0504	5
X 44472-0601	6 X	44472-0602	6 X	44472-0603	6 X	44472-0604	6
X 44472-0701	7 X	44472-0702	7 X	44472-0703	7 X	44472-0704	7
X 44472-0801	8 X	44472-0802	8 X	44472-0803	8 X	44472-0804	8
X 44472-0901	9 X	44472-0902	9 X	44472-0903	9 X	44472-0904	9
X 44472-1001	10 X	44472-1002	10 X	44472-1003	10 X	44472-1004	10
X 44472-1101	11 X	44472-1102	11 X	44472-1103	11 X	44472-1104	11
X 44472-1201	12 X	44472-1202	12 X	44472-1203	12 X	44472-1204	12

GOLD PLATING

PLATING: 2 (SEE NOTE 2)		PLATING: 2 (SEE NOTE 2)		PLATING: 2 (SEE NOTE 2)		PLATING: 2 (SEE NOTE 2)	
DRAINS: WITHOUT DRAIN HOLE		DRAINS: WITHOUT DRAIN HOLES		DRAINS: WITHOUT DRAIN HOLES		DRAINS: WITHOUT DRAIN HOLES	
PEGS: WITH PEGS		PEGS: WITH PEGS		PEGS: WITH PEGS		PEGS: WITH PEGS	
MAT'L: 94V-2 [NATURAL]		MAT'L: 94V-0 [NATURAL]		MAT'L: 94V-2 [NATURAL]		MAT'L: 94V-0 [NATURAL]	
PACKAGING: PK-5566-002		PACKAGING: PK-5566-002		PACKAGING: PK-5566-002		PACKAGING: PK-5566-002	
ITEM NO.	CKTS	ITEM NO.	CKTS	ITEM NO.	CKTS	ITEM NO.	CKTS
	4	44472-0407	4 X	44472-0408	4		
	5	44472-0507	5 X	44472-0508	5		
	6	44472-0607	6 X	44472-0608	6		
	7	44472-0707	7 X	44472-0708	7		
	8	44472-0807	8 X	44472-0808	8		
	9	44472-0907	9 X	44472-0908	9		
	10	44472-1007	10 X	44472-1008	10		
	11	44472-1107	11 X	44472-1108	11		
	12	44472-1207	12 X	44472-1208	12		

SEE SHEET 1 EC NO: UCP2072-1560 DRAWING/REV: 2017/01/05 CHKD: J.BELL APPR: SM/TH 2017/02/02	DESCRIPTION REV	QUALITY SYMBOLS	GENERAL TOLERANCES (UNLESS SPECIFIED)	DIMENSION STYLE	SCALE	DESIGN UNITS	THIRD ANGLE PROJECTION
		$\nabla = 0$ $\nabla = 0.05$ $\nabla = 0$	mm INCH 4 PLACES ± --- ± --- 3 PLACES ± --- ± 0.15 2 PLACES ± 0.38 ± 0.20 1 PLACE ± 0.50 ± --- ANGULAR ± 1/2°	IN/MM	1:1	METRIC	MINI-FIT VERT HDR ASSY W & W/O PEGS/DRAIN HOLES SINGLE AND DUAL ROW
		DRAFT WHERE APPLICABLE MUST REMAIN WITHIN DIMENSIONS	SEE CHART SIZE C	DRAWN BY: GEP DATE: 1994/07/25 CHECKED BY: R.J.F DATE: 1994/07/25 APPROVED BY: R.J.F DATE: 1994/07/25	MOLEX INCORPORATED SDA-44472-****	SHEET NO. 6 OF 8	
		THIS DRAWING CONTAINS INFORMATION THAT IS PROPRIETARY TO MOLEX INCORPORATED AND SHOULD NOT BE USED WITHOUT WRITTEN PERMISSION					



DUAL ROW PART NUMBERS 1 PEG REMOVED

PLATING:	I (SEE NOTE 2)	PLATING:	I (SEE NOTE 2)	PLATING:		PLATING:	
DRAINS:	WITHOUT DRAIN HOLES	DRAINS:	WITH DRAIN HOLES	DRAINS:		DRAINS:	
PEGS:	PEG #1 REMOVED	PEGS:	PEG #1 REMOVED	PEGS:	PEG #1 REMOVED	PEGS:	PEG #1 REMOVED
MAT'L:	92V-2 (NATURAL)	MAT'L:	92V-2 (NATURAL)	MAT'L:		MAT'L:	
PACKAGING:	PK-5566-001	PACKAGING:	PK-5566-001	PACKAGING:		PACKAGING:	
ITEM NO.	CKTS	ITEM NO.	CKTS	ITEM NO.	CKTS	ITEM NO.	CKTS
X 44472-0273	2	X 44472-0274	2		2		2
X 44472-0473	4	X 44472-0474	4		4		4
X 44472-0673	6	X 44472-0674	6		6		6
X 44472-0873	8	X 44472-0874	8		8		8
X 44472-1073	10	X 44472-1074	10		10		10
X 44472-1273	12	X 44472-1274	12		12		12
X 44472-1473	14	X 44472-1474	14		14		14
X 44472-1673	16	X 44472-1674	16		16		16
X 44472-1873	18	X 44472-1874	18		18		18
X 44472-2073	20	X 44472-2074	20		20		20
X 44472-2273	22	X 44472-2274	22		22		22
X 44472-2473	24	X 44472-2474	24		24		24

PLATING:	I (SEE NOTE 2)	PLATING:	I (SEE NOTE 2)	PLATING:		PLATING:	
DRAINS:	WITHOUT DRAIN HOLES	DRAINS:	WITH DRAIN HOLES	DRAINS:		DRAINS:	
PEGS:	PEG #2 REMOVED	PEGS:	PEG #2 REMOVED	PEGS:	PEG #2 REMOVED	PEGS:	PEG #2 REMOVED
MAT'L:	92V-2 (NATURAL)	MAT'L:	92V-2 (NATURAL)	MAT'L:		MAT'L:	
PACKAGING:	PK-5566-001	PACKAGING:	PK-5566-001	PACKAGING:		PACKAGING:	
ITEM NO.	CKTS	ITEM NO.	CKTS	ITEM NO.	CKTS	ITEM NO.	CKTS
X 44472-0277	2	X 44472-0278	2		2		2
X 44472-0477	4	X 44472-0478	4		4		4
X 44472-0677	6	X 44472-0678	6		6		6
X 44472-0877	8	X 44472-0878	8		8		8
X 44472-1077	10	X 44472-1078	10		10		10
X 44472-1277	12	X 44472-1278	12		12		12
X 44472-1477	14	X 44472-1478	14		14		14
X 44472-1677	16	X 44472-1678	16		16		16
X 44472-1877	18	X 44472-1878	18		18		18
X 44472-2077	20	X 44472-2078	20		20		20
X 44472-2277	22	X 44472-2278	22		22		22
X 44472-2477	24	X 44472-2478	24		24		24

\* ITEMS PRECEDED BY AN 'X' ARE NOT AVAILABLE

<b>SEE SHEET 1</b> EC NO: UCP2072-1560 DRAWING NO: 2072/01/05 CHKD: BELL APPR: SMTH 2072/02/02	QUALITY SYMBOLS ∇=0 ∇=0 ∇=0	GENERAL TOLERANCES (UNLESS SPECIFIED)		DIMENSION STYLE IN/MM		SCALE 1:1	DESIGN UNITS METRIC	THIRD ANGLE PROJECTION	
		4 PLACES ± --- ± ---	3 PLACES ± --- ± 0.15	DRAWN BY GEP	DATE 1994/07/25	TITLE MINI-FIT VERT HDR ASSY W & W/O PEGS/DRAIN HOLES SINGLE AND DUAL ROW			
		2 PLACES ± 0.38 ± 0.20	1 PLACE ± 0.50 ± ---	CHECKED BY R J F	DATE 1994/07/25	MOLEX INCORPORATED			
		ANGULAR ± 1/2°		APPROVED BY R J F	DATE 1994/07/25	MATERIAL NO. SEE CHART	DOCUMENT NO. SDA-44472-****	SHEET NO. 7 OF 8	
DRAFT WHERE APPLICABLE MUST REMAIN WITHIN DIMENSIONS				THIS DRAWING CONTAINS INFORMATION THAT IS PROPRIETARY TO MOLEX INCORPORATED AND SHOULD NOT BE USED WITHOUT WRITTEN PERMISSION					



DUAL ROW PART NUMBERS WITH MATTE TIN PLATING  
(DO NOT USE FOR NEW APPLICATIONS)

WITH PEGS			
PLATING:	1 (SEE NOTE 2)		
DRAINS:	WITH DRAIN HOLES		
PEGS:	WITH PEGS		
MAT'L:	94V-0 (NATURAL)		
PACKAGING:			
	ITEM NO.		CKTS
	44472-0283	0	2
	44472-0483	0	4
	44472-0683	0	6
	44472-0883		8
	44472-1083	0	10
	44472-1283	0	12
	44472-1483	0	14
	44472-1683	0	16
	44472-1883	0	18
	44472-2083		20
	44472-2283		22
	44472-2483	0	24

\*0\* = OBSOLETE

SEE SHEET 1 EC NO: UCP2072-1560 DRAWING NO: 2072/01/05 CHKD: BELL APPR: SMITH	2072/01/05 2072/02/02	QUALITY SYMBOLS ▽=0 ▽=0 ▽=0	GENERAL TOLERANCES (UNLESS SPECIFIED)		DIMENSION STYLE IN/MM		SCALE 1:1	DESIGN UNITS METRIC	THIRD ANGLE PROJECTION		
				mm	INCH	DRAWN BY GEP	DATE 1994/07/25	TITLE MINI-FIT VERT HDR ASSY W & W/O PEGS/DRAIN HOLES SINGLE AND DUAL ROW			
			4 PLACES ±---	±---	CHECKED BY RJF	DATE 1994/07/25					
			3 PLACES ±---	±.015	APPROVED BY RJF		DATE 1994/07/25	MOLEX INCORPORATED			
2 PLACES ±0.38	±.020	MATERIAL NO.		DOCUMENT NO.	SHEET NO.						
1 PLACE ±0.50	±---	DRAFT WHERE APPLICABLE MUST REMAIN WITHIN DIMENSIONS		SEE CHART	SDA-44472-****						
ANGULAR ±1/2°		SIZE		THIS DRAWING CONTAINS INFORMATION THAT IS PROPRIETARY TO MOLEX INCORPORATED AND SHOULD NOT BE USED WITHOUT WRITTEN PERMISSION							