

Excellent Integrated System Limited

Stocking Distributor

Click to view price, real time Inventory, Delivery & Lifecycle Information:

[MikroElektronika](#)
[MIKROE-945](#)

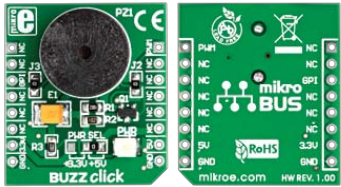
For any questions, you can email us directly:

sales@integrated-circuit.com



BUZZ click™

1. Introduction



Front and back side appearance of the BUZZ click Board

BUZZ Click is an accessory board in mikroBus™ form factor. Board features a piezo speaker capable of emitting audio signals. Buzzer's resonant frequency is 3.8kHz (where you can expect it's best performance). On-board buzzer driver can be connected to either digital (GPI) or PWM line. You can use either of those two pins to provide the signal from the microcontroller to the buzzer driver. Board is set to use 5V power supply by default. Solder **PWR SEL** SMD jumper to 3.3V position if used with 3.3V systems.

2. Soldering the headers

Before using your click board, make sure to solder the provided 1x8 male headers to both sides of the board. Two 1x8 male headers are included with the board in the package.



1

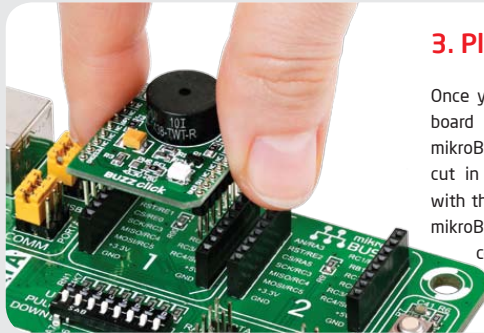


Turn the board upside down, so that bottom side is facing you upwards. Place shorter parts of the header pins in the both soldering pad locations.

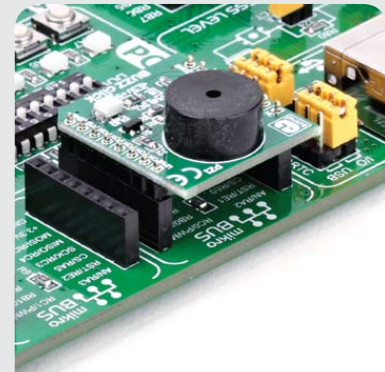


Turn the board upward again. Make sure to align the headers so that they are perpendicular to the board, then solder the pins carefully.

3. Plugging the board in



Once you have soldered the headers your board is ready to be placed into desired mikroBUS™ socket. Make sure to align the cut in the lower-right part of the board with the markings on the silkscreen at the mikroBUS™ socket. If all the pins are aligned correctly, push the board all the way into the socket.



4. Creating Sound

On-board buzzer driver can be connected to either digital (GPI) or PWM line. You can create sound using Sound library supported in mikroElektronika compilers, or utilize microcontroller internal PWM module to create the signal for the buzzer. Signal frequency determines the sound pitch, and the duty cycle determines the amplitude (sound volume).

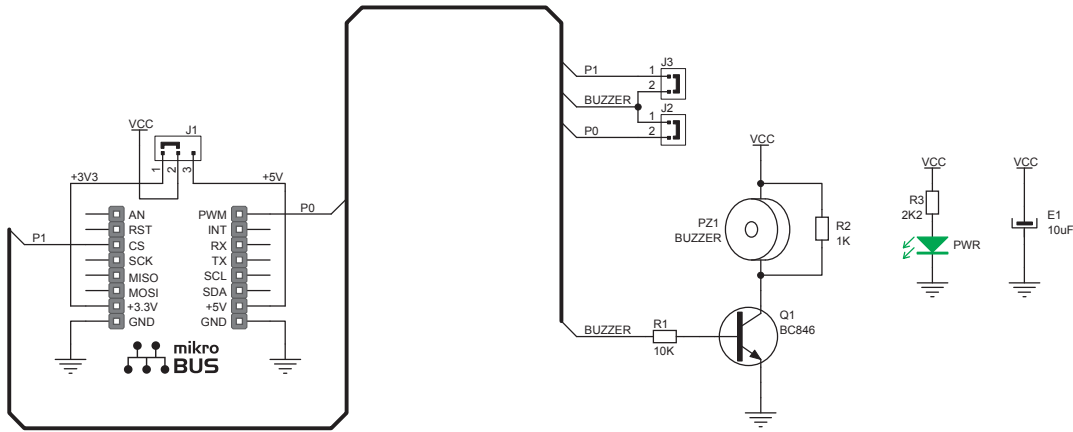


BUZZ click Manual ver. 1.00



0 100000 020043

5. Buzz click Board Schematics



6. Power supply selection



On-board **PWR SEL** zero-ohm resistor (SMD jumper) is used to determine whether 5V or 3.3V power supply is used. This resistor is provided in 5V position by default. In order to use BUZZ click with 3.3V development system, it is necessary to resolder this jumper to +3.3V position.

7. Code Examples

Once you have done all the necessary preparations, it's time to get your click board up and running. We have provided the examples for mikroC, mikroBasic and mikroPascal compilers on our **Libstock** website. Just download them and you are ready to start.



8. Support

MikroElektronika offers **Free Tech Support** (www.mikroe.com/esupport) until the end of product lifetime, so if something goes wrong, we are ready and willing to help!

