

Excellent Integrated System Limited

Stocking Distributor

Click to view price, real time Inventory, Delivery & Lifecycle Information:

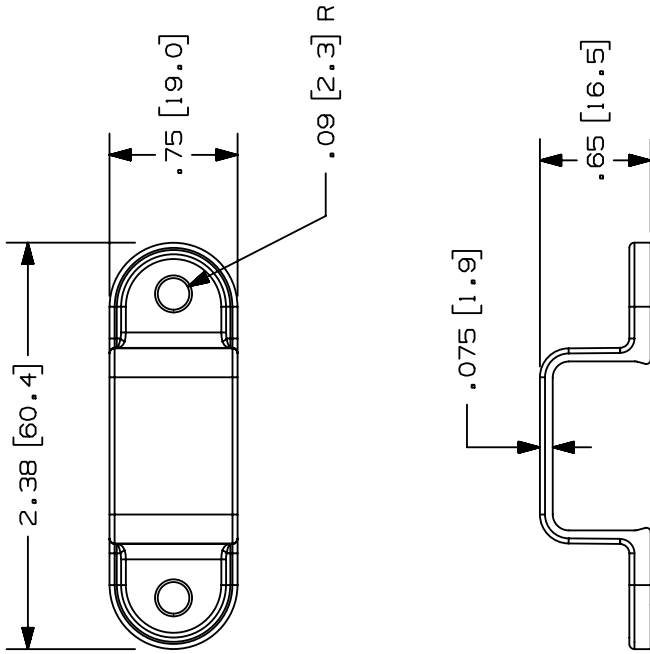
[Panduit](#)
[LMD5IW-Q](#)

For any questions, you can email us directly:

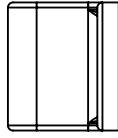
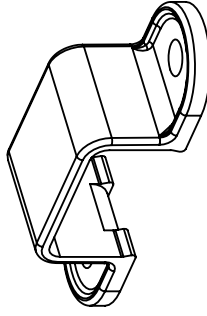
sales@integrated-circuit.com

THIS COPY IS PROVIDED ON A RESTRICTED BASIS AND IS NOT TO BE USED IN ANY WAY DETRIMENTAL TO THE INTERESTS OF PANDUIT CORP.

PANDUIT P/N	WEIGHT
LMD5	.09 LBS/10 PCS. .4 G/10 PCS.



- NOTES:**
- SEE CURRENT CATALOG FOR ADDITIONAL PART NUMBER SUFFIXES TO INDICATE COLOR AND OR PACKAGE QUANTITY.
 - DIMENSIONS IN PARENTHESES ARE IN METRIC.
 - INTERFERENCE FIT BETWEEN STRAP AND RACEWAY FOR EASE OF INSTALLATION.
 - STRAPS CAN BE USED AS COUPLER BETWEEN RACEWAY SECTIONS.
 - STRAPS CAN BE USED WITH LD AND LDP RACEWAYS TO PROVIDE COMPLETE TAMPER RESISTANCE.



CAD FILENAME/LAYERS		D35541CS_LMD5_C_02.PRT	
PANDUIT		CORP. TINLEY PARK, ILLINOIS	
MOUNTING STRAP FOR LDS5		DOUBLE HOLE (LMD5)	
CUSTOMER DRAWING			
UNLESS OTHERWISE SPECIFIED, DIMENSIONAL TOLERANCES ARE:		UNLESS OTHERWISE SPECIFIED, ALL DIMENSIONS ARE GIVEN IN INCHES, THIRD ANGLE PROJECTION.	
(X) ± (.XXX) ±.010 (.3)		SCALE FULL	
(XX) ±.03 (.8) ANGLES ±		DRAWING NO. 35541-45	
DRAWN BY MAT'L:		DWG SIZE A	
PM		PVC	
DATE 10-02-96			
CHK'D CEF			
REV	DATE	BY	CHK
2	03-08-04	JHEP	RGRO
1	07-08-99	DW	HIW
R	10-02-96	PM	CEF
DESCRIPTION		ECN	R
		35541-45	RGRO
		35541-45	HIW
		35541-45	CEF
			SUP